

## SCHOOL TERM DATES

25/26

- Monday 16th February—  
Half term
- Monday 30th March -Easter  
Holidays
- Monday 13th April—Return  
to School
- Monday 25th May—Half  
Term
- Monday 1st June—Non-  
pupil Day
- Tuesday 2nd June—Return  
to School
- Monday 20th July Non-Pupil  
Day
- Tuesday 21st July—Start of  
school holidays 2026



SILVER  
END  
ACADEMY  
GROW SHINE SUCCEED

12/01/2026

## A Message from Headteacher

I would like to begin by welcoming everyone back for the new term and by saying a sincere thank you for such a positive start to the Spring term. Your support and understanding as we navigated icy playgrounds and car parks at the beginning of term was very much appreciated.

As we reflect on the end of the Autumn term, I am reminded of our Headteacher's Assembly, where we celebrated the achievements of one child from each class who had stood out over the term. These pupils were recognised for living our school values and embodying our vision to *grow, shine and succeed*. It was fantastic to celebrate these individuals alongside their parents and carers, and to share in their success together as a school community.

I would also like to take this opportunity to thank our PTA for their incredibly successful Christmas Musical Bingo event. It was a lovely evening and raised valuable funds which will be used to purchase new books for our school library — something that will benefit all of our children. Please do look out for details of the next PTA event elsewhere in this newsletter.

We have made a strong start to the new term, continuing our focus on presentation and pride in our work. I have already had many children coming to see me for a Headteacher sticker, all for being firmly in the learning zone — focusing hard, showing excellent attitudes to learning and making great progress. It has been a pleasure to see such enthusiasm and commitment across the school.

On Friday, we welcomed a visitor who spent the day with me working on our school development priorities. He commented that Silver End Academy has high expectations, calm and purposeful classroom environments, and that the celebration of achievement and success is clearly encouraged throughout the school. This feedback is a real credit to our pupils, staff and wider school community.

I will share our school development plan priorities with you in the next newsletter, and I look forward to working together as we continue to build on this positive start to the term.

Thank you, as always, for your continued support., Mrs Meares

# HERO



Here, every day, ready and on time

## Minutes lost per day

5 minutes    10 minutes    15 minutes    20 minutes    25 minutes

equates to a yearly loss of:



Five minutes late per day adds up to three learning days lost in a school year

If 15 minutes late each day you will miss two full weeks of school in one year

## Is your Attendance on Track?

### 100% Attendance

Well Done!  
• Our target for all students  
• You are right on track

### 97% Attendance

Well Done, keep it up  
• You are on the right track for success keep it up  
• 6 Days Absence = 30 hours of lost learning

### 95% Attendance

We're Concerned  
• Poor attendance gives you less chance of success  
• 10 Days Absence = 50 hours of lost learning

### 90% Attendance

Seriously Worried  
• Very poor attendance has a serious impact on your education  
• 19 Days Absence = 95 hours of lost learning

## Where does your child sit on the attendance mountain?





# Be a superhero

and come to school every day!

If you miss school, you miss out.

# HERO





Here, every day, ready and on time


# PTA Newsletter


Find us on Facebook ~ @silverendacademypta

## ANNOUNCEMENTS

All money raised at the Christmas event is being used to purchase new books for KS2, and we are currently finalising our book order.

 Adults Only Silent Disco   
Join us for a fun night out supporting the school!

 Friday 27th February 2026, 8-11pm

 Silver End Village Hall

Tickets available now:

[www.ticketsource.co.uk/silver-end-academy\\_pta](http://www.ticketsource.co.uk/silver-end-academy_pta)

Headphones provided. Adults only.

## THANK YOU

A huge thank you to everyone who supported our Family Christmas Musical Bingo! We loved celebrating the season with you



## OUR TOTALS

Family Christmas Musical Bingo!  
We raised an amazing

**£391.55**

## BIG NEWS:

### PTA CHARITY STATUS APPLICATION

We have some exciting news to share with you – we have officially applied for charity status! 🎉

This is an important step forward for our PTA. Once approved, charity status will allow us to apply for grants and access additional funding opportunities that are not currently available to us. This means we'll be able to raise more money and provide even greater support for the school, enriching activities, resources, and experiences for all our children.

We'll keep you updated as the application progresses and will share more news soon.

## IMPORTANT DATES

 **SATURDAY 27<sup>TH</sup> FEBRUARY**

SILENT DISCO -  
ADULT ONLY



SILVER END ACADEMY PTA

**ADULTS ONLY**

# SILENT DISCO

**Friday 27th February 2026**

**8:00pm – 11:00pm**



**Silver End Village Hall**

3 Broadway, Silver End  
CM8 3RQ

## WHAT TO EXPECT:

- Headphones Provided
- Multiple Music Channels
- A Great Night Out Supporting Silver End Academy

**18+ ADULTS ONLY EVENT!**

Please Note: Only drinks & snacks purchased at the event  
may be consumed.

*Dance the night away with us!*

# HEALTHY SNACKS

Children should only bring fruit or vegetables for their snack at breaktime to help us stay a healthy and nut-free school.



SILVER  
END  
ACADEMY



## Water Bottles

Please make sure your child has a named water bottle in school and you follow the school policy that bottles should only contain water.



## Reception Admissions - September 2026



The statutory national closing date for Primary School applications is 15 January 2026.

Applications can be made online via [www.essex.gov.uk/admissions](http://www.essex.gov.uk/admissions). 99% of parents in Essex applied online last year.

All of the application information is available on the website above.



Have you seen the new club that we are running? It is a fantastic after school club, to support your child's calm, confidence and resilience and comes highly recommended. Follow the link to get signed up.



**Calm. Confidence. Resilience.**

**Supporting children with tools they can use for life.**

We teach powerful mindfulness and mindset techniques in a fun and innovative way. Through Mentoring 4 Kids by Kids™ meditations, movement, stories, games and creative activities.



**SILVER END ACADEMY**

**WEDNESDAYS, 3:00-4PM**

**BOOKING: [HTTPS://MINIME-MINDFULNESS-BRAINTREE-DISTRICT.CLASSFORKIDS.IO/TERM/91](https://minime-mindfulness-braintree-district.classforkids.io/term/91)**

**BOOK NOW**



**[www.minimemindfulness.co.uk](http://www.minimemindfulness.co.uk)**

MiniMe Mindfulness® – teaching positive mindfulness and mindset techniques in a fun and innovative way. Because little eyes are always watching.™



## Celebrating your Child's Birthday



Don't forget to book in for lunch to celebrate your child's birthday!

- One adult can book in to have lunch, on or near, your child's birthday.
- Go to Parentmail and buy an adult lunch, priced at £3.20 you can also have a packed lunch if you wish.
- Email the school office at least a week in advance so we can book you in and we can let our catering team know.
- If you have missed your child's birthday (September – now), please don't worry – find a convenient day and book to have lunch this term or next term.
- When you come to school (12pm), your child will meet you at the office and you'll be taking to the hall to have lunch. Once you've finished eating, you'll be brought back to the school office.



## TESCO STRONGER STARTS COMMUNITY GRANT

If you shop at Tesco, vote for us with your tokens!

Look out for our school project which aims to ensure children have an opportunity to promote their oracy skills and open ended learning opportunities.

The project with the highest number of votes will receive up to £1,500, second place up to £1,00 and third place up to £500.

You can find votes for our project in 5 Tesco stores:

Braintree Superstore CM7 3HQ

Braintree Great Notley Superstore CM77 7WW

Braintree Marks Farm Superstore CM77 8AA

Braintree Coggeshall Road Express Express CM7 9EL

Halstead Superstore Superstore CO9 2JN



## Parking Reminder

Please be careful when parking your car at school drop off and pick up. We have been made aware that cars are blocking

Residents driveways. Please be considerate when parking .

If you see an incident please report it to: <https://north.parkingpartnership.org/enforcement-requests/>

North Essex Parking Partnership will respond to every report and the more reports they get the better informed they are on how



## Silver End Academy Pantry

**Now by appointment only**

If you would like a pantry bag please let Mrs Gigg know via DOJO, email [adminsil@inspiresmat.co.uk](mailto:adminsil@inspiresmat.co.uk) or via the school Office. We are well stocked at the moment and are able to support with a range of products.

Kind regards Mrs Gigg



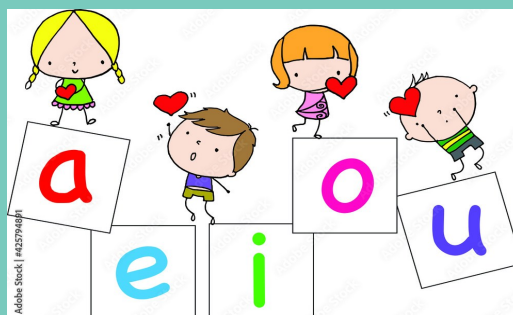
# Phonics

## EYFS parent Phonic lesson

Tuesday 27th January 2026

Parents to attend at 2.30pm.

Please arrive at the office 10 minutes before.





## 1st Forest School Lesson- Mount Olympus

Our children in Mount Olympus have had the most amazing time during their first forest school session yesterday.

They have had the opportunity to explore setting up the hammock, setting up the swing, building a tent and exploring a range of gross motor activities.



## Children's medical appointments

If your child needs to attend a medical/dental appointment during school time.

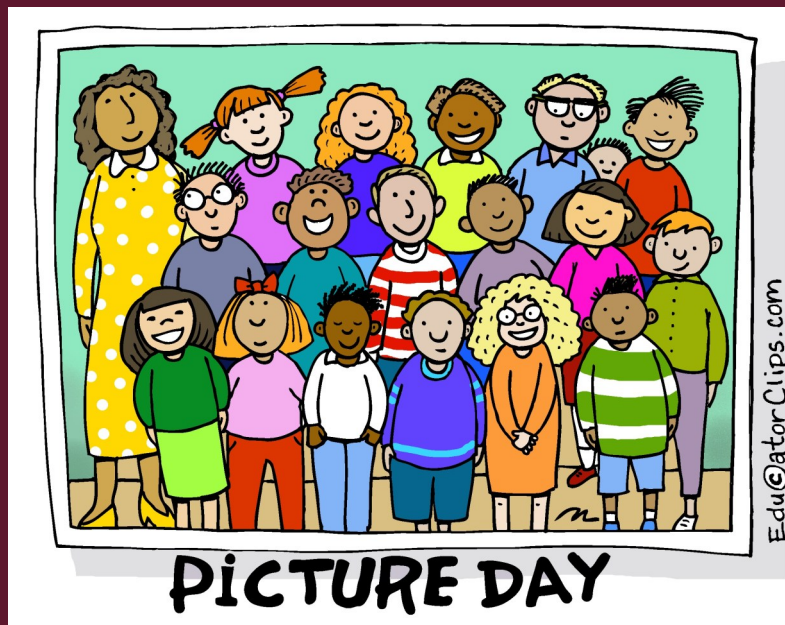
Please email [adminsil@inspiresmat.co.uk](mailto:adminsil@inspiresmat.co.uk) your proof of medical appointment.



*Kittle*  
PHOTOGRAPHIC

## Date for your diary—Class Photographs

26/02/2026



**YOUTH  
SERVICE**

Inspire  
Enable  
Achieve

## Supporting Young Carers in Essex

Essex Young Carers Service

Be who you  
WANT to be...

**YOUTH  
SERVICE**



## Who is a Young Carer?

Young carers are children and young people under 18 years old who provide regular and on-going care to another person who is physically or mentally ill, disabled or misuses substances.

Young Adult Carers are aged between 16 – 24, and can also access support from this Service.

Many young people don't see themselves as carers and may not realise there is practical and emotional support available in Essex.

You may be a young carer if you:

- care for a family member, because of illness, disability or old age
- help someone with bathing or dressing, going to the toilet or getting into/out of bed
- need to cook for your family
- look after money or organise the family budget
- help anyone to take medication regularly
- collect prescriptions or benefits on behalf of someone else or go shopping for the family
- look after brothers or sisters, by taking them to school, doing their laundry, or cooking their meals
- take care of housework, such as dusting, Hoovering, washing or ironing
- speak on behalf of someone who has difficulty speaking or communicating for themselves
- translate or interpret for someone at home

## Personalised support to young carers and their families



### The Effects of being a Young Carer

- you have responsibilities at home that prevent you from spending time with your friends, or inviting them around your house
- you feel sad, angry, guilty or embarrassed about the help you give to anyone at home
- you feel upset that friends don't have the same responsibilities
- you avoid telling anyone outside the family about your home situation.



### Many young people don't see themselves as carers

### How can the young carer key workers help?

- We offer free personalised support to young carers and their families that will be developed with you around your need for help and the caring you do.

#### The service offers:

- Confidential one-to-one support with a dedicated key worker in the area you live, including telephone support.
- Information, advice and guidance and assisting you to access other services to support you as a young carer.
- Training opportunities e.g. moving people safely, building confidence and self-esteem, fire safety and access to counselling services if needed.
- Recreational activities to take you away from your caring role and meet other young carers and make new friends.
- Transition to adult carer services as you come up to 18.

### Where can you access the Essex Young Carers Service?

- Key workers are available across the whole of Essex and will be based in your local area.
- They will visit you at home, school or somewhere else at an agreed time.

## Identifying and supporting young carers at Silver End Academy

We are committed to ensuring that all students get the support they need to have a positive school experience, are happy in school and can achieve their full potential.

We know that for some students, factors outside of school can have a big impact on this, particularly if there is someone in their family or a friend who is ill, disabled, or has a mental health problem or an addiction. We think in every class there could be as many as 2 pupils who are helping to support someone because of one of these factors – we call these students **young carers**.

Students can be young carers for lots of different reasons:

They might be providing physical support to a parent with a physical illness such as fibromyalgia or ME, such as cooking, fetching things or helping with things like putting shoes on or doing the shopping

They might be helping a parent with a disability who needs help with more personal tasks such as getting dressed, bathing or changing dressings

Or it could be more emotional support – like being there if their autistic sibling is upset, taking responsibility for young siblings whilst parents attend health appointments, or checking that a parent with depression/anxiety is ok.

Some young carers might be doing lots of caring, others just a small amount but are impacted by the situation at home for example by worrying about the person with the health condition, or needing to do more things for themselves compared to other students.

There is lots of support available for young carers and their families should they ever need it – both inside and outside of school.

If you think that any of the above applies to your child, and that they might possibly be a young carer then please contact Mrs Hatchman, our Family Liaison Officer. Even if you feel your child or family are doing really well and don't need any support, we find that it's better for us to be aware and have them on our radar as potential young carers, in case the situation suddenly changes and they (or you) do need support. It just means that you and your child don't have to start from scratch with letting us know what is going on if things have become difficult.



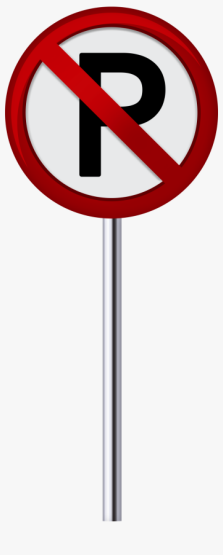
## 'Head Lice is not nice'

We have had a few reported cases of headlice in school recently.

We kindly ask that you check your child's hair regularly and treat if necessary, to help prevent further spread.

Head lice are a common occurrence in school settings and nothing to be alarmed about. With everyone's support, we can manage this quickly and effectively.

Thank you for your cooperation.



## School Car Park

We kindly remind all families that the staff car park is not to be used for drop-off or pick-up at any time, including during Breakfast Club and After School Clubs.

As we have a small car park, it is important that we keep these spaces available for staff and essential deliveries only.

If you have prior agreement from the school office or hold a valid Blue Badge, you may use the designated disabled parking bays.



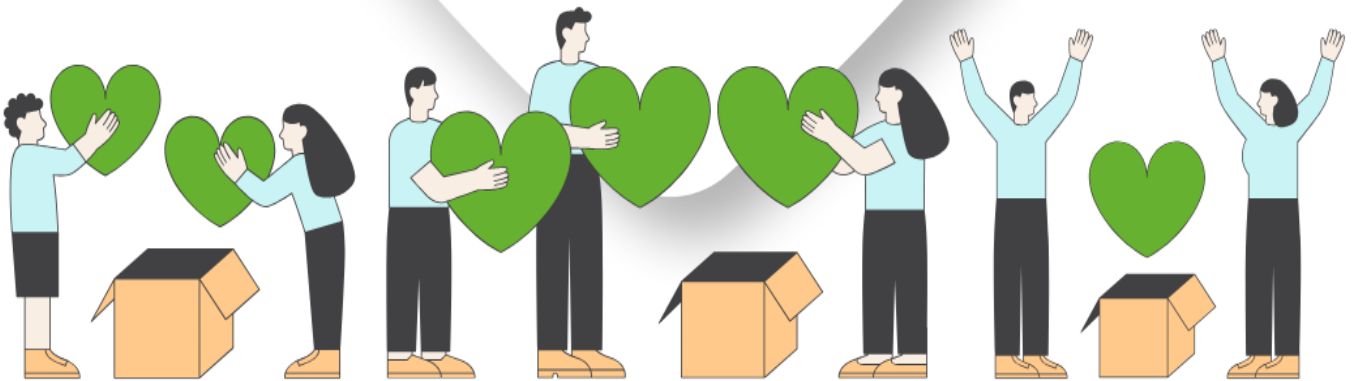
We appreciate your cooperation in keeping the car park safe and accessible for those who need it.

Thank you for your understanding and support



East of  
England  
COOP

## Local Giving



**We've been chosen by the East of England Co-op's Silver End food store as their Local Giving charity for winter.**

**Over the next three months, they'll be:**

- 💰 Collecting donations for us
  - 📣 Raising awareness of our work
- Pop in store to get involved and donate!

#LocalGiving #SupportingCommunities #SupportLocal



## Inspires MAT School Term and Holiday Dates Academic Year 2025-2026

September 2025							October 2025							November 2025							December 2025						
M	T	W	T	F	S	S	M	T	W	T	F	S	S	M	T	W	T	F	S	S	M	T	W	T	F	S	S
									1	2	3	4	5						1	2	1	2	3	4	5	6	7
1	2	3	4	5	6	7	6	7	8	9	10	11	12	3	4	5	6	7	8	9	8	9	10	11	12	13	14
8	9	10	11	12	13	14	13	14	15	16	17	18	19	10	11	12	13	14	15	16	15	16	17	18	19	20	21
15	16	17	18	19	20	21	20	21	22	23	24	25	26	17	18	19	20	21	22	23	22	23	24	25	26	27	28
22	23	24	25	26	27	28	27	28	29	30	31			24	25	26	27	28	29	30	29	30	31				
29	30																										

January 2026							February 2026							March 2026							April 2026						
M	T	W	T	F	S	S	M	T	W	T	F	S	S	M	T	W	T	F	S	S	M	T	W	T	F	S	S
			1	2	3	4							1							1			1	2	3	4	5
5	6	7	8	9	10	11	2	3	4	5	6	7	8	2	3	4	5	6	7	8	6	7	8	9	10	11	12
12	13	14	15	16	17	18	9	10	11	12	13	14	15	9	10	11	12	13	14	15	13	14	15	16	17	18	19
19	20	21	22	23	24	25	16	17	18	19	20	21	22	16	17	18	19	20	21	22	20	21	22	23	24	25	26
26	27	28	29	30	31		23	24	25	26	27	28		23	24	25	26	27	28	29	27	28	29	30			
														30	31												

May 2026							June 2026							July 2026							August 2026						
M	T	W	T	F	S	S	M	T	W	T	F	S	S	M	T	W	T	F	S	S	M	T	W	T	F	S	S
				1	2	3	1	2	3	4	5	6	7			1	2	3	4	5						1	2
4	5	6	7	8	9	10	8	9	10	11	12	13	14	6	7	8	9	10	11	12	3	4	5	6	7	8	9
11	12	13	14	15	16	17	15	16	17	18	19	20	21	13	14	15	16	17	18	19	10	11	12	13	14	15	16
18	19	20	21	22	23	24	22	23	24	25	26	27	28	20	21	22	23	24	25	26	17	18	19	20	21	22	23
25	26	27	28	29	30	31	29	30						27	28	29	30	31			24	25	26	27	28	29	30
																					31						

- = Schooldays
- = School holidays
- = Bank holidays
- = Weekends
- = Inset Days (non-pupil)

In addition, schools allocate five non-pupil days out of the school days indicated, or the equivalent in disaggregated twilight sessions.

<b>Autumn Term:</b>	Monday 1 September 2025 – Friday 19 December 2025 <i>Half Term 27 October – 31 October</i>	75 days
<b>Spring Term:</b>	Monday 5 January 2026 – Friday 27 March 2026 <i>Half Term 16 February - 20 February</i>	55 days
<b>Summer Term:</b>	Monday 13 April 2026 – Monday 20 July 2026 <i>Half Term 25 May – 29 May, and May Bank Holiday - 4 May</i>	65 days
		195 days

**Please note:**  
 The above dates may vary for individual schools, especially Foundation, Voluntary Aided schools and Academies.  
 You are strongly advised to check with your child's school before making any holiday or other commitments.



# Inspires MAT School Term and Holiday Dates

## Academic Year 2026-2027

September 2026							October 2026							November 2026							December 2026						
M	T	W	T	F	S	S	M	T	W	T	F	S	S	M	T	W	T	F	S	S	M	T	W	T	F	S	S
										1	2	3	4							1		1	2	3	4	5	6
	1	2	3	4	5	6	5	6	7	8	9	10	11	2	3	4	5	6	7	8	7	8	9	10	11	12	13
7	8	9	10	11	12	13	12	13	14	15	16	17	18	9	10	11	12	13	14	15	14	15	16	17	18	19	20
14	15	16	17	18	19	20	19	20	21	22	23	24	25	16	17	18	19	20	21	22	21	22	23	24	25	26	27
21	22	23	24	25	26	27	26	27	28	29	30	31		23	24	25	26	27	28	29	28	29	30	31			
28	29	30												30													
January 2027							February 2027							March 2027							April 2027						
M	T	W	T	F	S	S	M	T	W	T	F	S	S	M	T	W	T	F	S	S	M	T	W	T	F	S	S
				1	2	3	1	2	3	4	5	6	7	1	2	3	4	5	6	7				1	2	3	4
4	5	6	7	8	9	10	8	9	10	11	12	13	14	8	9	10	11	12	13	14	5	6	7	8	9	10	11
11	12	13	14	15	16	17	15	16	17	18	19	20	21	15	16	17	18	19	20	21	12	13	14	15	16	17	18
18	19	20	21	22	23	24	22	23	25	25	26	27	28	22	23	24	25	26	27	28	19	20	21	22	23	24	25
25	26	27	28	29	30	31								29	30	31					26	27	27	29	30		
May 2027							June 2027							July 2027							August 2027						
M	T	W	T	F	S	S	M	T	W	T	F	S	S	M	T	W	T	F	S	S	M	T	W	T	F	S	S
					1	2		1	2	3	4	5	6				1	2	3	4							1
3	4	5	6	7	8	9	7	8	9	10	11	12	13	5	6	7	8	9	10	11	2	3	4	5	6	7	8
10	11	12	13	14	15	16	14	15	16	17	18	19	20	12	13	14	15	16	17	18	9	10	11	12	13	14	15
17	18	19	20	21	22	23	21	22	23	24	25	26	27	19	20	21	22	23	24	25	16	17	18	19	20	21	22
24	25	26	27	28	29	30	28	29	30					26	27	28	29	30	31		23	24	25	26	27	28	29
31																					30	31					

- = Schooldays
- = School holidays
- = Bank holidays
- = Weekends

In addition, schools allocate five non-pupil days, highlighted yellow, out of the school days indicated, or the equivalent in disaggregated twilight sessions.

<b>Autumn Term:</b>	Tuesday 1 September 2026 – Friday 18 December 2026 <i>Half Term 26 October – 30 October</i>	74 days
<b>Spring Term:</b>	Monday 4 January 2027 – Thursday 25 March 2027 <i>Half Term 15 February - 19 February</i>	54 days
<b>Summer Term:</b>	Monday 12 April 2027 – Wednesday 21 July 2027 <i>Half Term 31 May – 4 June, and May Bank Holiday - 3 May</i>	67 days
		195 days

**Please note:**

The above dates may vary for individual schools, especially Foundation, Voluntary Aided schools and Academies.

You are strongly advised to check with your child's school before making any holiday or other commitments.

# Menu for week commencing 12/01/2026 Week 2

## Silver End Academy

Week 2

### Monday

**Pasta Bar**  
Pasta with a choice of toppings  
Pepperoni, Cheese or Tomato  
served with mixed leaves and five  
bean salad

### Tuesday

**Chicken Curry**  
served with fluffy rice  
and Naan Bread served with  
Kachumber salad

### Wednesday

**Roast Chicken**  
served with crispy roast potatoes,  
carrots and peas

### Thursday

**Pepperoni Pizza**

### Friday

**Fish Fingers**  
served with chipped potatoes  
and peas

**Sweet Treat Friday**  
Kitchens Choice

Available everyday  
A vibrant salad bar, fresh fruit and yoghurt Bread, milk, lactose reduced milk and  
water

**Jacket Potato with a choice of  
toppings**

**Veggie Chilli**  
served with Fluffy rice and Nachos

**Jacket Potato with a choice of  
toppings**

**Cheesy BBQ Quorn Fillet**  
served with crispy toast potatoes,  
carrots and peas

**Jacket Potato with a choice of  
toppings**

**Cheese Pizza**

**Jacket Potato with a choice of  
toppings**

**Vegetable Frittata**  
served with chipped potatoes and  
peas

**Jacket Potato with a choice of  
toppings**



# Menu

**Fresh**  
All our food is cooked fresh  
each day

**Healthy**  
Our pasta, rice and breads  
are healthy wholemeal  
products

**checked**  
We always use  
reputable suppliers and  
where possible use  
local produce



# Menu for week commencing 19/01/26 Week 3

## Silver End Academy

Week 3

# Menu

### Monday

#### Pizza Day

##### Pepperoni

served with mixed leaves and five bean salad

#### Pizza Day

##### Cheese & Tomato

served with salad



### Tuesday

#### Sausage and Mashed Potato

Served with baked beans or peas (gravy available)

Jacket Potato with a choice of toppings

#### Quorn Sausage and Mashed Potato

served with baked beans or peas (gravy available)



### Wednesday

#### Sticky Chicken

served with wholemeal rice and corn on the cob

Jacket Potato with a choice of toppings

#### Cheese & Tomato Whirl

served with wholemeal rice and corn on the cob

#### Fresh

All our food is cooked fresh each day

### Thursday

#### Brunch Lunch

Sausage, bacon, egg, hash brown and baked beans

Jacket Potato with a choice of toppings

#### Veg Brunch Lunch

Quorn Sausage, egg, hash brown and baked beans

#### Healthy

Our pasta, rice and breads are healthy wholemeal products

### Friday

#### Jumbo Fishfinger

served with crispy chips and peas

Jacket Potato with a choice of toppings

Southern veggie burger/no bun served with crispy chips and peas

#### checked

We always use reputable suppliers and where possible use local produce

#### Sweet Treat Friday

Kitchens choice

Jacket Potato with a choice of toppings



Available everyday

A vibrant salad bar, fresh fruit and yoghurt, bread, milk, lactose reduced milk and water