

SCHOOL TERM DATES

25/26

- Monday 22nd December—Christmas Holidays
- Monday 5th January—Non-pupil day
- Tuesday 6th January—Return to school
- Monday 16th February—Half term
- Monday 30th March -Easter Holidays
- Monday 13th April—Return to School
- Monday 25th May—Half Term
- Monday 1st June—Non-pupil Day
- Tuesday 2nd June—Return to School
- Monday 20th July Non-Pupil Day
- Tuesday 21st July—Start of school holidays 2026



SILVER
END
ACADEMY
GROW SHINE SUCCEED

8 / 1 2 / 2 0 2 5

A Message from Headteacher

Dear Families,

The Christmas celebrations are really starting at school. We've got classrooms decorated, performance practice taking place as much as possible, Christmas cards being posted and excitement about Christmas lunch on Wednesday and our Winter Craft Afternoon on Thursday.

All of our classes have had assessment week last week. This is an opportunity for teachers to see how much progress children have made since their last assessments. Assessments can be really challenging for some children, especially as it means the timetable is a bit different to normal but every class has coped brilliantly. Please say well done to your children from me.

Last week, Mrs Fenty shared 'The Smartest Giant in Town' during our Monday assembly when we were thinking about our core value of kindness. This week, we are learning about 'honesty' and Mrs Meares will share a beautiful book called 'The Empty Pot', a story about a Chinese Emperor using an unusual test to choose his heir.

It has been really lovely to welcome some parents in to have lunch with their children on their birthday. If you've been able to come to school, I hope you've enjoyed this special time together. I know the children look forward to it. This is one of a number of events we've got planned to increase parental engagement in school which is something we are really keen to increase. If your child is in Year 1 or Year 2, look out for details about phonics and spelling workshops you'll be able to come to. We've also got our amazing Winter Crft Afternoon this week and look forward to you having a chance to make some crafts with your children. Please don't worry if you can't come— all children will take part and have something special to take home.

I want to take this opportunity to wish you all a very Happy Christmas and for making me feel so welcome at Silver End Academy. I've really enjoyed my first term here, getting to know you all, and look forward to our work together in the Spring term.

Mrs Meares

Christmas Cards Postbox



Do you have Christmas cards you'd like to send to your friends/ staff?

Bring them into school and post them in our beautiful Christmas post box and our Christmas Elves, Connie and Devon, will sort them and deliver them to classes.

Don't forget to write on each envelope which class the person is in.

Happy card writing!



**SILVER
END
ACADEMY**



ool Road ● Silver End ● CM8 3RZ
Headteacher ● Mrs S Meares
Telephone ● 01376 583353
Email ● adminsil@inspiresmat.co.uk
www.silverendschool.co.uk

Dear Parents and Carers,

We are delighted to invite you to our **Winter Craft Afternoon** on **Thursday 11th December**. This will be a festive opportunity for you to join your child in the classroom and enjoy a range of simple Christmas crafts together.

Each session lasts 30 minutes, and parents may **either rotate between classrooms** (if they have more than one child) **or remain with their child for the full 1 hour 30 minutes** if they only have one child. Children will stay in their own classrooms throughout; parents will move when needed.

Session Timings

- **Session 1:** 1:20 – 1:50
- **Session 2:** 1:50 – 2:20
- **Session 3:** 2:20 – 2:50



Parents will leave classroom areas at **2:50pm**, after which children will begin preparing for hometime. **Normal dismissal is at 3:05pm** from usual classroom doors.

Arrival

Please arrive via the **usual playground entrances** used for daily pick-up.

LSAs will meet you at the playground points and guide you to your starting classroom. Families with more than one child will always **start with their youngest child's class**.

During the Afternoon

- Children remain in their own classrooms.
- Parents may stay for the whole afternoon (one-child families) or rotate when directed (multiple-child families).
- Teachers will offer **a few simple festive crafts**, such as decorations, Christmas cards, and tree ornaments.
- **Teachers will let you know when each 30-minute session has finished**, so you can move to your next child if needed.
- **LSAs will be in the hallways to guide directions and ensure everyone's safety.**

Important Notices

- **Toilet Use:** Due to limited adult toilet facilities and to ensure the safety of all children, we kindly ask all adults to use the toilet before arriving. We cannot allow parents to use school toilets during the event.
- **Space Limitations:** Due to restricted space in classrooms and corridors, we ask that parents avoid bringing younger siblings wherever possible. The same applies to buggies and strollers, as there is limited room to store or manoeuvre them safely.

End of the Event

At the end of the final session, teachers will direct parents to exit via the **usual playground collection points**. LSAs will support this process to ensure a smooth and safe exit.

We look forward to welcoming you for a joyful, creative afternoon with your child. Thank you for your cooperation and continued support.

Warm regards,
Silver End Academy



Grow ● Shine ● Succeed

HEALTHY SNACKS

Children should only bring fruit or vegetables for their snack at breaktime to help us stay a healthy and nut-free school.



SILVER
END
ACADEMY



Water Bottles

Please make sure your child has a named water bottle in school and you follow the school policy that bottles should only contain water.

Reception Admissions - September 2026

As you may be aware, the primary school (Reception) admission round opened on Monday 10 November 2025, for parents of children to apply for a Reception school place for the academic year that starts in September 2026.

The statutory national closing date for applications is 15 January 2026.

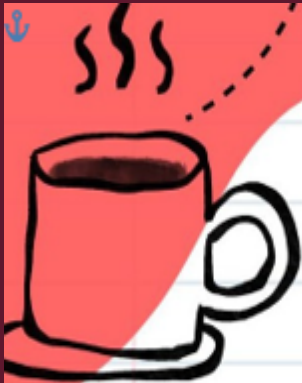
Applications can be made online via www.essex.gov.uk/admissions. 99% of parents in Essex applied online last year.

All of the application information is available on the website above.

Our remaining tour date is Thursday 8th January at 9.30am.

Please email adminsil@inspiresmat.co.uk to book.





You are invited to drop in at our our


COFFEE MORNING




IN THE SCHOOL HALL

8.45am - 10.30am

Friday 12th
December
2025



We will be joined by Mrs Meares,
Mrs Gigg, Mrs Hatchman and
Anita Austin from the
Essex Child & Family
Wellbeing service.



TESCO STRONGER STARTS COMMUNIT GRANT

If you shop at Tesco, vote for us with your tokens!

Look out for our school project which aims to ensure children have an opportunity to promote their oracy skills and open ended learning opportunities.

The project with the highest number of votes will receive up to £1,500, second place up to £1,00 and third place up to £500.

You can find votes for our project in 5 Tesco stores:

Braintree Superstore CM7 3HQ

Braintree Great Notley Superstore CM77 7WW

Braintree Marks Farm Superstore CM77 8AA

Braintree Coggeshall Road Express Express CM7 9EL

Halstead Superstore Superstore CO9 2JN





PTA NEWSLETTER



● Find us on Facebook ~ @silverendacademypta ●

PTA ANNOUNCEMENTS

We're excited to share some wonderful news! 🎉

On Saturday, Silver End Academy PTA was invited to an event at Witham Public Hall, hosted by the Witham Carnival Association. We were delighted to receive a £100 donation from funds raised on Carnival Day!

This generous donation will help us buy urgently needed new books for our school, as highlighted by our Head of English, Miss Wright. 📚 ✨

We'll continue raising funds at our next PTA event—your support truly makes a difference.

A huge thank you to the Witham Carnival Association for their kindness and generosity!



CONTACT US

Find us on Facebook
@Silverendacademypta
www.facebook.com/silverendacademypta
PTA Email
silverendpta@gmail.com

IMPORTANT DATES

- **FRIDAY 12TH DECEMBER**
CHRISTMAS FAMILY BINGO
- **SATURDAY 27TH FEBRUARY**
SILENT DISCO - ADULT ONLY

Merry
Christmas

THE PTA NEEDS YOUR SUPPORT!

Every event we run helps raise vital funds for our school. To make these events successful (and profitable), we rely on families supporting us by purchasing tickets and joining in. All money raised goes straight back into Silver End Academy to benefit our children and school community. Thank you for helping us make a difference! 💙

Silver End Academy Pantry

Now by appointment only

If you would like a pantry bag please let Mrs Gigg know via DOJO, email adminsil@inspiresmat.co.uk or via the school Office. We are well stocked at the moment and are able to support with a range of products.

Kind regards Mrs Gigg



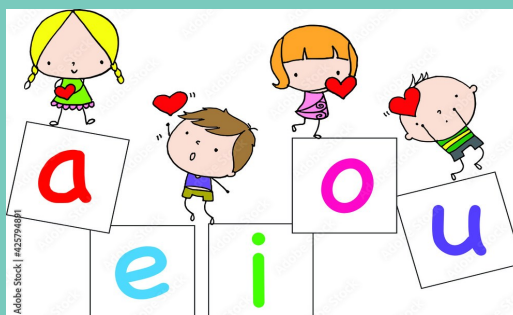
Phonics

EYFS parent Phonic lesson

Tuesday 27th January 2026

Parents to attend at 2.30pm.

Please arrive at the office 10 minutes before.



Celebrating your child's birthday



Don't forget to book in for lunch to celebrate your child's birthday!

- One adult can book in to have lunch, on or near, your child's birthday.
- Go to Parentmail and buy an adult lunch, priced at £3.20 you can also have a packed lunch if you wish.
- Email the school office at least a week in advance so we can book you in and we can let our catering team know.
- If you have missed your child's birthday (September - now), please don't worry - find a convenient day and book to have lunch this term or next term.
- When you come to school (12pm), your child will meet you at the office and you'll be taking to the hall to have lunch. Once you've finished eating, you'll be brought back to the school office.



'Head Lice is not nice'

We have had a few reported cases of headlice in school recently. We kindly ask that you check your child's hair

regularly and treat if necessary, to help prevent further spread.

Head lice are a common occurrence in school settings and nothing to be alarmed about. With everyone's support, we can manage this quickly and effectively.

School Car Park

We kindly remind all families that the staff car park is not to be used for drop-off or pick-up at any time, including during Breakfast Club and After School Clubs.

As we have a small car park, it is important that we keep these spaces available for staff and essential deliveries only.

If you have prior agreement from the school office or hold a valid Blue Badge, you may use the designated disabled parking bays.

We appreciate your cooperation in keeping the car park safe and accessible for those who need it.

Thank you for your understanding and support.

Mrs Meares- Headteacher



First Aid Procedures

In order to ensure our first aid procedures are as robust and effective as possible, we are introducing a small change. From now on, if your child receives first aid at school, they will be given an “I’ve been given First Aid” sticker, in addition to the usual first aid slip.

The sticker will act as a helpful reminder if the slip is misplaced and will also alert any adult in school that your child has received first aid. If your child comes out of school wearing a sticker, you can ask them what happened and check their first aid slip for more details.

Please note that our current system for informing parents about any bumps to the head will remain the same, as it continues to work well.

Thank you for your continued support in helping us keep our children safe and cared for at school.

**YOUTH
SERVICE**

Inspire
Enable
Achieve

Supporting Young Carers in Essex

Essex Young Carers Service

Be who you
WANT to be...

**YOUTH
SERVICE**



Who is a Young Carer?

Young carers are children and young people under 18 years old who provide regular and on-going care to another person who is physically or mentally ill, disabled or misuses substances.

Young Adult Carers are aged between 16 – 24, and can also access support from this Service.

Many young people don't see themselves as carers and may not realise there is practical and emotional support available in Essex.

You may be a young carer if you:

- care for a family member, because of illness, disability or old age
- help someone with bathing or dressing, going to the toilet or getting into/out of bed
- need to cook for your family
- look after money or organise the family budget
- help anyone to take medication regularly
- collect prescriptions or benefits on behalf of someone else or go shopping for the family
- look after brothers or sisters, by taking them to school, doing their laundry, or cooking their meals
- take care of housework, such as dusting, Hoovering, washing or ironing
- speak on behalf of someone who has difficulty speaking or communicating for themselves
- translate or interpret for someone at home

Personalised support to young carers and their families



The Effects of being a Young Carer

- you have responsibilities at home that prevent you from spending time with your friends, or inviting them around your house
- you feel sad, angry, guilty or embarrassed about the help you give to anyone at home
- you feel upset that friends don't have the same responsibilities
- you avoid telling anyone outside the family about your home situation.



Many young people don't see themselves as carers

How can the young carer key workers help?

- We offer free personalised support to young carers and their families that will be developed with you around your need for help and the caring you do.

The service offers:

- Confidential one-to-one support with a dedicated key worker in the area you live, including telephone support.
- Information, advice and guidance and assisting you to access other services to support you as a young carer.
- Training opportunities e.g. moving people safely, building confidence and self-esteem, fire safety and access to counselling services if needed.
- Recreational activities to take you away from your caring role and meet other young carers and make new friends.
- Transition to adult carer services as you come up to 18.

Where can you access the Essex Young Carers Service?

- Key workers are available across the whole of Essex and will be based in your local area.
- They will visit you at home, school or somewhere else at an agreed time.

Identifying and supporting young carers at Silver End Academy

We are committed to ensuring that all students get the support they need to have a positive school experience, are happy in school and can achieve their full potential.

We know that for some students, factors outside of school can have a big impact on this, particularly if there is someone in their family or a friend who is ill, disabled, or has a mental health problem or an addiction. We think in every class there could be as many as 2 pupils who are helping to support someone because of one of these factors – we call these students **young carers**.

Students can be young carers for lots of different reasons:

They might be providing physical support to a parent with a physical illness such as fibromyalgia or ME, such as cooking, fetching things or helping with things like putting shoes on or doing the shopping

They might be helping a parent with a disability who needs help with more personal tasks such as getting dressed, bathing or changing dressings

Or it could be more emotional support – like being there if their autistic sibling is upset, taking responsibility for young siblings whilst parents attend health appointments, or checking that a parent with depression/anxiety is ok.

Some young carers might be doing lots of caring, others just a small amount but are impacted by the situation at home for example by worrying about the person with the health condition, or needing to do more things for themselves compared to other students.

There is lots of support available for young carers and their families should they ever need it – both inside and outside of school.

If you think that any of the above applies to your child, and that they might possibly be a young carer then please contact Mrs Hatchman, our Family Liaison Officer. Even if you feel your child or family are doing really well and don't need any support, we find that it's better for us to be aware and have them on our radar as potential young carers, in case the situation suddenly changes and they (or you) do need support. It just means that you and your child don't have to start from scratch with letting us know what is going on if things have become difficult.



Y6 and EYFS Buddies

EYFS and Y6 buddies have had two more sessions since they first met. They've done some colouring together and then enjoyed stories together. Thomas (Everest) said "It is really fun and it helps the little ones be more confident when they grow up"





Inspires MAT School Term and Holiday Dates Academic Year 2025-2026

September 2025							October 2025							November 2025							December 2025						
M	T	W	T	F	S	S	M	T	W	T	F	S	S	M	T	W	T	F	S	S	M	T	W	T	F	S	S
									1	2	3	4	5						1	2	1	2	3	4	5	6	7
1	2	3	4	5	6	7	6	7	8	9	10	11	12	3	4	5	6	7	8	9	8	9	10	11	12	13	14
8	9	10	11	12	13	14	13	14	15	16	17	18	19	10	11	12	13	14	15	16	15	16	17	18	19	20	21
15	16	17	18	19	20	21	20	21	22	23	24	25	26	17	18	19	20	21	22	23	22	23	24	25	26	27	28
22	23	24	25	26	27	28	27	28	29	30	31			24	25	26	27	28	29	30	29	30	31				
29	30																										

January 2026							February 2026							March 2026							April 2026						
M	T	W	T	F	S	S	M	T	W	T	F	S	S	M	T	W	T	F	S	S	M	T	W	T	F	S	S
			1	2	3	4							1							1			1	2	3	4	5
5	6	7	8	9	10	11	2	3	4	5	6	7	8	2	3	4	5	6	7	8	6	7	8	9	10	11	12
12	13	14	15	16	17	18	9	10	11	12	13	14	15	9	10	11	12	13	14	15	13	14	15	16	17	18	19
19	20	21	22	23	24	25	16	17	18	19	20	21	22	16	17	18	19	20	21	22	20	21	22	23	24	25	26
26	27	28	29	30	31		23	24	25	26	27	28		23	24	25	26	27	28	29	27	28	29	30			
														30	31												

May 2026							June 2026							July 2026							August 2026						
M	T	W	T	F	S	S	M	T	W	T	F	S	S	M	T	W	T	F	S	S	M	T	W	T	F	S	S
				1	2	3	1	2	3	4	5	6	7			1	2	3	4	5						1	2
4	5	6	7	8	9	10	8	9	10	11	12	13	14	6	7	8	9	10	11	12	3	4	5	6	7	8	9
11	12	13	14	15	16	17	15	16	17	18	19	20	21	13	14	15	16	17	18	19	10	11	12	13	14	15	16
18	19	20	21	22	23	24	22	23	24	25	26	27	28	20	21	22	23	24	25	26	17	18	19	20	21	22	23
25	26	27	28	29	30	31	29	30						27	28	29	30	31			24	25	26	27	28	29	30
																					31						

- = Schooldays
- = School holidays
- = Bank holidays
- = Weekends
- = Inset Days (non-pupil)

In addition, schools allocate five non-pupil days out of the school days indicated, or the equivalent in disaggregated twilight sessions.

Autumn Term:	Monday 1 September 2025 – Friday 19 December 2025 <i>Half Term 27 October – 31 October</i>	75 days
Spring Term:	Monday 5 January 2026 – Friday 27 March 2026 <i>Half Term 16 February - 20 February</i>	55 days
Summer Term:	Monday 13 April 2026 – Monday 20 July 2026 <i>Half Term 25 May – 29 May, and May Bank Holiday - 4 May</i>	65 days
		195 days

Please note:
The above dates may vary for individual schools, especially Foundation, Voluntary Aided schools and Academies.
You are strongly advised to check with your child's school before making any holiday or other commitments.

Parking Outside School

When dropping off/picking children from school, please can we remind you that you must not park or stop on the yellow lines outside school between 8-9.30 am and again 2.30-4pm.

We have recently had several incidents where children have been put in danger by drivers stopping, reversing and clearly ignoring the yellow lines and the highway code - Please be considerate and Keep our children safe!! We have invested over £300 for new signage to help remind drivers to keep our children safe.

If you are concerned that poor parking has caused a safety issue, has blocked your drive, is not following the law or has caused the blockage of the road for emergency vehicles, please follow the links indicated in this website from Essex Police and report the car in question.

<https://www.essex.police.uk/advice/advice-and-information/asb/asb/antisocial-behaviour/nuisance-parking/>



**Engines
off** when you
drop off



Make your PLEDGE today and help us to become an idling aware school

Let's drive
down air
pollution



www.braintree.gov.uk/dropoffpledge

 **Braintree**
District Council

Lost Property

We are starting to accumulate unnamed lost property.

Please remember to name every item of school uniform and PE kit.

If you are missing any items please feel free to come to the office.



Parking Reminder

Please be careful when parking your car at school drop off and pick up. We have been made aware of an incident in which a car reversed into 2 different cars last week.

If you see an incident please report it to: <https://north.parkingpartnership.org/enforcement-requests/>

North Essex Parking Partnership will respond to every report and the more reports they get the better informed they are on how they can support the local area and the school improve parking issues.

Dates for your Diary

Wednesday 10th December - IROCK Christmas Assembly

Wednesday 10th December - Christmas Lunch and Christmas Jumper Day

Monday 15th December - KS1 Christmas Production @ 1.30pm

Tuesday 16th December - EYFS Christmas Production @ 2pm

Tuesday 16th December - KS2 Christmas Production @ 3.30pm

Wednesday 17th December - KS2 Christmas Production @ 1.30pm

Wednesday 17th December - KS1 Christmas Production @ 3.30pm

Thursday 18th December - KS2 Christmas Production @ 1.30pm



Christmas Tree

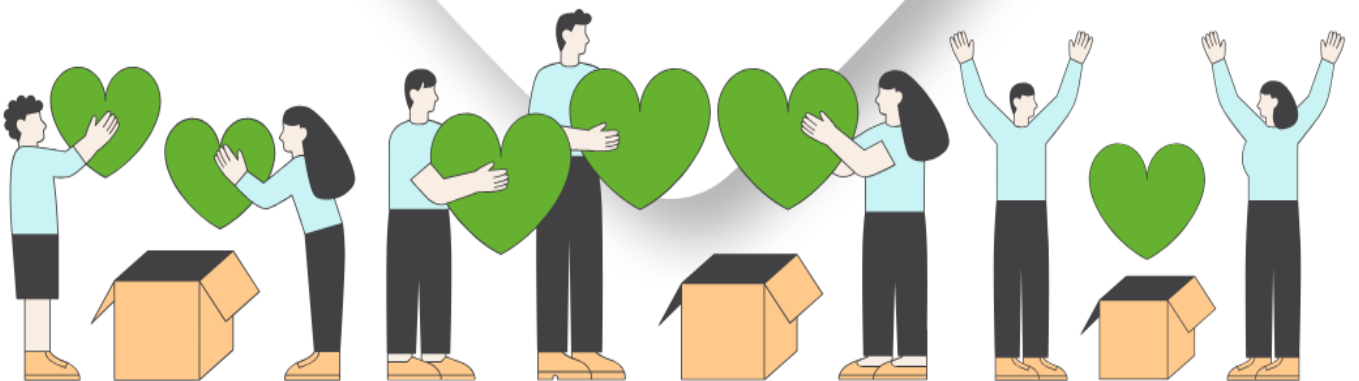
Thank you Clark and Carter LTD for the incredibly kind donation of our Christmas tree. The tree was decorated by children who attend Breakfast Club and looks really beautiful in the hall.





East of
England
COOP

Local Giving



We've been chosen by the East of England Co-op's Silver End food store as their Local Giving charity for winter.

Over the next three months, they'll be:

- 💰 Collecting donations for us
 - 📣 Raising awareness of our work
- Pop in store to get involved and donate!

#LocalGiving #SupportingCommunities #SupportLocal

Menu for week commencing 08/12/2025 Week 3

Silver End Academy

Week 3

Menu

Monday

Pizza Day
Cheese & Tomato
served with mixed leaves
and five bean salad

Lentil Moussaka
served with a mixed salad

Jacket Potato with a choice of toppings

Tuesday

Sticky Chicken
served with fluffy rice and
sweetcorn

Sausage & Mushroom Goulash
served with fluffy rice

Jacket Potato with a choice of toppings

Wednesday

Christmas Dinner Day

Fresh
All our food is cooked fresh
each day

Thursday

Rich Beef Pie
served with creamy mash,
carrots and broccoli

Bean Burrito
served with traffic light salad
(crispy lettuce, tomatoes and
sweetcorn)

Jacket Potato with a choice of toppings

Healthy
Our pasta, rice and breads
are healthy wholemeal
products

Friday

Freshly Prepared Chicken Nuggets
served with crispy chips, baked
beans or petit pois
Sweet Treat Friday
Kitchens Choice

Cheese and Tomato Whirl
served with crispy chips,
baked beans or petit pois

Jacket Potato with a choice of toppings

checked
We always use reputable
suppliers and where
possible use local produce

Available everyday
A vibrant salad bar, fresh fruit and yoghurt, bread, milk and water



Menu for week commencing 15/12/25 Week 1

Silver End Academy End of Term Favourites

Monday

Pasta Bar

served with a choice of toppings.
Pepperoni, Cheese or Tomato

Jacket Potato with a
Choice of toppings

Tuesday

Chicken Curry

Served with Fluffy Rice and Naan
Bread

Vegetarian Chilli
served with fluffy rice and
peas & sweetcorn

Jacket Potato with a choice of
toppings

Wednesday

Spaghetti Bolognese

Served with Garlic Bread

Vegetarian Bolognese
served with Garlic Bread

Jacket Potato with a choice of
toppings

Thursday

Fish Fingers

Served with Chips, Peas and Baked
Beans

Quorn Dippers
Served with Chips, Peas and Baked
Beans

Jacket Potato with a choice of
toppings

Friday

Homemade Pepperoni Pizza

Homemade Cheese & Tomato
Pizza

Sweet Treat Friday
Kitchens Choice

Jacket Potato with a choice of
toppings

Available everyday
A vibrant salad bar, fresh fruit and yoghurt Bread, milk and water

Week 1



Fresh
All our food is cooked
each day

Menu

Healthy

Our pasta, rice and breads
are healthy wholemeal
products

checked
We always use
reputable suppliers and
where possible use local
produce

