

SCHOOL TERM DATES

25/26

- Monday 22nd December—Christmas Holidays
- Monday 5th January—Non-pupil day
- Tuesday 6th January—Return to school
- Monday 16th February—Half term
- Monday 30th March -Easter Holidays
- Monday 13th April—Return to School
- Monday 25th May—Half Term
- Monday 1st June—Non-pupil Day
- Tuesday 2nd June—Return to School
- Monday 20th July Non-Pupil Day
- Tuesday 21st July—Start of school holidays 2026



SILVER
END
ACADEMY
GROW SHINE SUCCEED

24/11/25

A Message from Headteacher

Dear Families,

We've had another couple of really busy weeks at school, filled with learning, celebration, and a continued commitment to our core values.

In recent assemblies, we have been exploring our core values of *Responsibility* and *Curiosity*, using the inspiring book 'The Darkest Dark' by Chris Hadfield to help children reflect on challenges, bravery, and the importance of asking questions. The children have engaged brilliantly and shown real insight into how these values can guide their learning and behaviour every day.

Our long-term plans for each year group have now been shared on Class Dojo, giving families a clear picture of the exciting curriculum opportunities ahead. We hope this helps you feel even more connected to what your children will be exploring throughout the year.

We also had a fantastic time celebrating Children in Need—the school was a sea of colourful spots, and the enthusiasm from every pupil made the day truly special.

Recently, Mr Jones and a visiting headteacher joined us for a learning walk. They were extremely impressed by the excellent behaviour for learning, the levels of engagement in lessons, and the warm, positive learning environments across the school. We are incredibly proud of our pupils and staff for continually striving for excellence.

As the weather is turning chillier, please do remind your children to bring a warm coat to school each day so they can enjoy outdoor play comfortably.

Thank you, as always, for your continued support.

Warm regards,

Mrs Meares

HEALTHY SNACKS

Children should only bring fruit or vegetables for their snack at breaktime to help us stay a healthy and nut-free school.



SILVER
END
ACADEMY



Water Bottles

Please make sure your child has a named water bottle in school and you follow the school policy that bottles should only contain water.



Silver End Academy PTA

Christmas Family

MUSICAL BINGO

GREAT PRIZES AND FUN FOR ALL

Gather friends and family for festive laughter & joy! All grandparents/siblings/other relatives welcome!

£5 per adult
£3 per child

12

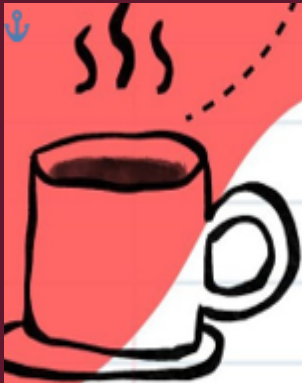
12

25

Session One - 3:30pm
Session Two - 6:30pm

Prizes sponsored by
CWSE Ltd

Silver End Academy, School Road



You are invited to drop in at our our


COFFEE MORNING




IN THE SCHOOL HALL

8.45am - 10.30am

Friday 12th
December
2025



We will be joined by Mrs Meares,
Mrs Gigg, Mrs Hatchman and
Anita Austin from the
Essex Child & Family
Wellbeing service.



Yellow Day

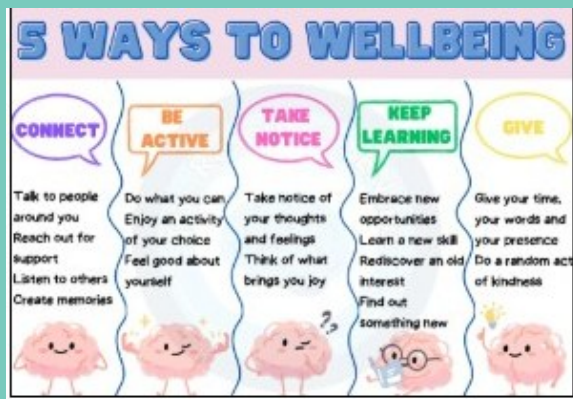
Dear Parents/Carers,

We are so proud and grateful that as a school, we raised a fantastic **£162.65** on World Mental Health Day!

All funds from the day will be going directly to 'Young Minds' a fantastic charity that supports young people nationally, raising awareness and supporting young people's mental health.

Throughout the day, children across all year groups discussed strategies to support not only their own wellbeing, but those around them too, using the 5 Ways to Wellbeing.

Thank you so much for your continued support,
Miss Anderson



Children in Need 2025

Huge thank you to everyone who donated to Children in Need, the children looked fantastic in their non-uniform and spotty clothes! We raised an amazing £180.51!





Christmas Dinner and Christmas Jumper Day-

Wednesday 10th December 2025



We will be holding our Christmas dinner on Wednesday 10th December. The cost of the meal will be £3.20.

Please see the menu below: Option 1 Roast Turkey, Roast Potatoes, Yorkshire Pudding, Pigs in blankets, Stuffing, Sliced carrots, Peas, Gravy

Dessert Festive Ice Cream tub

Option 2 Quorn Fillet, Roast Potatoes, Yorkshire Pudding, Stuffing, Sliced carrots, Peas, Gravy

Dessert Festive Ice Cream tub

THERE WILL NOT BE ANY OTHER CHOICE OF MEAL ON THIS DAY. ALL MEALS NEED TO BE ORDERED IN ADVANCE. NO ORDERS CAN BE TAKEN ON THE DAY.

Reception, Year 1 and Year 2 do NOT need to pay as it is included in the Universal Free School Meals.

Year Three, Four, Five and Six will need to pay in advance on ParentMail. Your child's Christmas dinner will not be ordered until payment has been made. Please go onto ParentMail, Payments, Shop and then click on 'Christmas Dinner 2025' to pay. Please do NOT make the payment on the usual dinner account section, as the price for the Christmas dinner is higher. Please select which option you would like by **Monday 1st December at 2pm.**

If your child is entitled to free school meals, no payment is required.

Please remember to complete the order form on ParentMail, under Forms to choose your child's option for Christmas dinner day, if your child is Free school Meals or Universal Free School Meals.

Kind regards

School Office



Celebrating your child's birthday



Don't forget to book in for lunch to celebrate your child's birthday!

- One adult can book in to have lunch, on or near, your child's birthday.
- Go to Parentmail and buy an adult lunch, priced at £3.20 you can also have a packed lunch if you wish.
- Email the school office at least a week in advance so we can book you in and we can let our catering team know.
- If you have missed your child's birthday (September - now), please don't worry - find a convenient day and book to have lunch this term or next term.
- When you come to school (12pm), your child will meet you at the office and you'll be taking to the hall to have lunch. Once you've finished eating, you'll be brought back to the school office.



'Head Lice is not nice'

We have had a few reported cases of headlice in school recently. We kindly ask that you check your child's hair

regularly and treat if necessary, to help prevent further spread.

Head lice are a common occurrence in school settings and nothing to be alarmed about. With everyone's support, we can manage this quickly and effectively.

School Car Park

We kindly remind all families that the staff car park is not to be used for drop-off or pick-up at any time, including during Breakfast Club and After School Clubs.

As we have a small car park, it is important that we keep these spaces available for staff and essential deliveries only.

If you have prior agreement from the school office or hold a valid Blue Badge, you may use the designated disabled parking bays.

We appreciate your cooperation in keeping the car park safe and accessible for those who need it.

Thank you for your understanding and support.

Mrs Meares- Headteacher



First Aid Procedures

In order to ensure our first aid procedures are as robust and effective as possible, we are introducing a small change. From now on, if your child receives first aid at school, they will be given an “I’ve been given First Aid” sticker, in addition to the usual first aid slip.

The sticker will act as a helpful reminder if the slip is misplaced and will also alert any adult in school that your child has received first aid. If your child comes out of school wearing a sticker, you can ask them what happened and check their first aid slip for more details.

Please note that our current system for informing parents about any bumps to the head will remain the same, as it continues to work well.

Thank you for your continued support in helping us keep our children safe and cared for at school.

**YOUTH
SERVICE**

Inspire
Enable
Achieve

Supporting Young Carers in Essex

Essex Young Carers Service

Be who you
WANT to be...

**YOUTH
SERVICE**



Who is a Young Carer?

Young carers are children and young people under 18 years old who provide regular and on-going care to another person who is physically or mentally ill, disabled or misuses substances.

Young Adult Carers are aged between 16 – 24, and can also access support from this Service.

Many young people don't see themselves as carers and may not realise there is practical and emotional support available in Essex.

You may be a young carer if you:

- care for a family member, because of illness, disability or old age
- help someone with bathing or dressing, going to the toilet or getting into/out of bed
- need to cook for your family
- look after money or organise the family budget
- help anyone to take medication regularly
- collect prescriptions or benefits on behalf of someone else or go shopping for the family
- look after brothers or sisters, by taking them to school, doing their laundry, or cooking their meals
- take care of housework, such as dusting, Hoovering, washing or ironing
- speak on behalf of someone who has difficulty speaking or communicating for themselves
- translate or interpret for someone at home

Personalised support to young carers and their families



The Effects of being a Young Carer

- you have responsibilities at home that prevent you from spending time with your friends, or inviting them around your house
- you feel sad, angry, guilty or embarrassed about the help you give to anyone at home
- you feel upset that friends don't have the same responsibilities
- you avoid telling anyone outside the family about your home situation.

Many young people don't see themselves as carers



How can the young carer key workers help?

- We offer free personalised support to young carers and their families that will be developed with you around your need for help and the caring you do.

The service offers:

- Confidential one-to-one support with a dedicated key worker in the area you live, including telephone support.
- Information, advice and guidance and assisting you to access other services to support you as a young carer.
- Training opportunities e.g. moving people safely, building confidence and self-esteem, fire safety and access to counselling services if needed.
- Recreational activities to take you away from your caring role and meet other young carers and make new friends.
- Transition to adult carer services as you come up to 18.

Where can you access the Essex Young Carers Service?

- Key workers are available across the whole of Essex and will be based in your local area.
- They will visit you at home, school or somewhere else at an agreed time.

Identifying and supporting young carers at Silver End Academy

We are committed to ensuring that all students get the support they need to have a positive school experience, are happy in school and can achieve their full potential.

We know that for some students, factors outside of school can have a big impact on this, particularly if there is someone in their family or a friend who is ill, disabled, or has a mental health problem or an addiction. We think in every class there could be as many as 2 pupils who are helping to support someone because of one of these factors – we call these students **young carers**.

Students can be young carers for lots of different reasons:

They might be providing physical support to a parent with a physical illness such as fibromyalgia or ME, such as cooking, fetching things or helping with things like putting shoes on or doing the shopping

They might be helping a parent with a disability who needs help with more personal tasks such as getting dressed, bathing or changing dressings

Or it could be more emotional support – like being there if their autistic sibling is upset, taking responsibility for young siblings whilst parents attend health appointments, or checking that a parent with depression/anxiety is ok.

Some young carers might be doing lots of caring, others just a small amount but are impacted by the situation at home for example by worrying about the person with the health condition, or needing to do more things for themselves compared to other students.

There is lots of support available for young carers and their families should they ever need it – both inside and outside of school.

If you think that any of the above applies to your child, and that they might possibly be a young carer then please contact Mrs Hatchman, our Family Liaison Officer. Even if you feel your child or family are doing really well and don't need any support, we find that it's better for us to be aware and have them on our radar as potential young carers, in case the situation suddenly changes and they (or you) do need support. It just means that you and your child don't have to start from scratch with letting us know what is going on if things have become difficult.



Silver End Academy

Grow ♦ Flourish ♦ Succeed

Parent Tour Dates

Was your child born between September 2021 and August 2022 and is now due to start school in September 2026?

Come and take a look around our school by visiting us on one of our tour dates:

- Tuesday 25th November at 5pm
- Thursday 8th January 9.30pm

Please call the school office on 01376 583353 to book a space or by emailing adminsil@inspiresmat.co.uk

Reception Admissions - September 2026

As you may be aware, the primary school (Reception) admission round opened on Monday 10 November 2025, for parents of children to apply for a Reception school place for the academic year that starts in September 2026.

The statutory national closing date for applications is 15 January 2026.

Applications can be made online via www.essex.gov.uk/admissions. 99% of parents in Essex applied online last year.

All of the application information is available on the website above.

Our remaining tour dates are Tuesday 25th November at 5pm and Thursday 8th January at 9.30am. Please email adminsil@inspiresmat.co.uk to book.





Y6 and EYFS Buddies

EYFS and Y6 buddies have had two more sessions since they first met. They've done some colouring together and then enjoyed stories together. Thomas (Everest) said "It is really fun and it helps the little ones be more confident when they grow up"





**SILVER
END
ACADEMY**

We have created a pantry at school to help local families. If you would like to donate any non perishable items, please leave at the school office. The Pantry will be open for browsing at the below times. We are well stocked so do please take what you need.

PANTRY

WE'RE HERE TO HELP

TUESDAYS AND THURSDAYS

2.45 - 3.15pm



Parking Outside School

When dropping off/picking children from school, please can we remind you that you must not park or stop on the yellow lines outside school between 8-9.30 am and again 2.30-4pm.

We have recently had several incidents where children have been put in danger by drivers stopping, reversing and clearly ignoring the yellow lines and the highway code - Please be considerate and Keep our children safe!! We have invested over £300 for new signage to help remind drivers to keep our children safe.

If you are concerned that poor parking has caused a safety issue, has blocked your drive, is not following the law or has caused the blockage of the road for emergency vehicles, please follow the links indicated in this website from Essex Police and report the car in question.

<https://www.essex.police.uk/advice/advice-and-information/asb/asb/antisocial-behaviour/nuisance-parking/>



**Engines
off** when you
drop off



Make your PLEDGE today and help us to become an idling aware school

Let's drive
down air
pollution



www.braintree.gov.uk/dropoffpledge

 Braintree
District Council

Lost Property

We are starting to accumulate unnamed lost property.

Please remember to name every item of school uniform and PE kit.

If you are missing any items please feel free to come to the office.



Parking Reminder

Please be careful when parking your car at school drop off and pick up. We have been made aware of an incident in which a car reversed into 2 different cars last week.

If you see an incident please report it to: <https://north.parkingpartnership.org/enforcement-requests/>

North Essex Parking Partnership will respond to every report and the more reports they get the better informed they are on how they can support the local area and the school improve parking issues.



Dates for your Diary



Wednesday 10th December - IROCK Christmas Assembly

Wednesday 10th December - Christmas Lunch and Christmas Jumper Day

Monday 15th December - KS1 Christmas Production @ 1.30pm

Tuesday 16th December - EYFS Christmas Production @ 2pm

Tuesday 16th December - KS2 Christmas Production @ 3.30pm

Wednesday 17th December - Headteachers Award Assembly

Wednesday 17th December - KS1 Christmas Production @ 3.30pm

Thursday 18th December - KS2 Christmas Production @ 1.30pm

**Please note that I ROCK Assembly is now on
Wednesday 10th December 2025**





Local Giving



We've been chosen by the East of England Co-op's Silver End food store as their Local Giving charity for winter.

Over the next three months, they'll be:

- 💰 Collecting donations for us
 - 📣 Raising awareness of our work
- Pop in store to get involved and donate!

#LocalGiving #SupportingCommunities #SupportLocal

PTA NEWSLETTER

• Find us on Facebook ~ @silverendacademypta •

PTA ANNOUNCEMENTS

Thank you to everyone who took the time to complete our recent parent survey. We truly appreciate your feedback and the thoughtful suggestions you shared.

We're now exploring a range of options to enhance the school's outdoor spaces, inspired by the ideas and priorities highlighted in your responses. Your input is helping us identify improvements that will benefit all children and make their time outside even more enjoyable and enriching.

We'll keep you updated as plans develop and thank you again for being part of this important conversation.

✨CHRISTMAS PERFORMANCES✨ ✨REFRESHMENTS✨

We're hoping to offer refreshments at this year's Christmas performances. We will confirm which performances we'll be covering closer to the time.

Thank you for your continued support!

CONTACT US

Find us on Facebook
@Silverendacademypta
www.facebook.com/silverendacademypta
PTA Email
silverendpta@gmail.com

OUR TOTALS

COLOUR RUN
We raised an amazing

£364.43



🎄 CHRISTMAS MUSICAL BINGO GET YOUR TICKETS NOW! 🎵

Join us for a fun and festive evening at our Christmas Musical Bingo event! Instead of numbers, we'll be playing clips of your favourite Christmas songs. Simply listen, match them on your bingo card, and shout BINGO! for a chance to win some great prizes. It's a brilliant event for all ages and guaranteed to get everyone into the Christmas spirit!

Tickets: Available via the link on our PTA Facebook page
Ticket deadline: Friday 5th December
Don't miss out grab your tickets before the closing date and get ready for a merry, musical night!

IMPORTANT DATES

FRIDAY 12TH
DECEMBER

CHRISTMAS
FAMILY BINGO

SATURDAY 27TH
FEBRUARY

SILENT DISCO -
ADULT ONLY

Menu for week commencing 24/11/2025 Week 1

Silver End Academy

Monday

Veggie
Pasta Bolognese
served with mixed salad

Tuesday

Sweet & Sour Chicken with
Noodles
served with garden peas

Wednesday

Roast Chicken
served with crispy roast potatoes,
cauliflower florets, shredded
cabbage and gravy

Thursday

Toad in the Hole
served with creamy mash,
carrots and broccoli

Friday

Fishcakes
served with
crispy chips and petits pois

Sweet Treat Friday
Kitchens Choice

Available everyday
A vibrant salad bar, fresh fruit and yoghurt Bread, milk and water

Week 1



Menu

Veggie Bites in a Tangy Tomato
Sauce
served with pasta and
corn on the cob

Jacket Potato with a
Choice of toppings

Macaroni Cheese
served with a
pea and carrot medley

Jacket Potato with a choice of
toppings

Vegetarian Chilli
served with fluffy rice and
peas & sweetcorn

Jacket Potato with a choice of
toppings

Curried Vegetable Samosa
served with baked potato wedges
and tomato salsa

Jacket Potato with a choice of
toppings

Veggie Squash Puff
served with petit pois

Jacket Potato with a choice of
toppings

Fresh
All our food is cooked fresh
each day

Healthy
Our pasta, rice and breads
are healthy wholemeal
products

checked
We always use
reputable suppliers and
where possible use local
produce



Menu for week commencing 01/12/2025 Week 2

Silver End Academy

Week 2

Monday

Quorn Dippers in a Wholemeal Bun
served with
baked sweet potato wedges and
sweetcorn

Vegetable Thai Noodles
mixed stir fried vegetables with
Tofu

**Jacket Potato with a choice of
toppings**

Tuesday

Chicken Tikka Masala
served with fluffy rice
and kachumber salad

Ratatouille Pasta with Quorn
served with a crisp mixed salad

**Jacket Potato with a choice of
toppings**

Wednesday

Cottage Pie
served with carrots and peas

Lentil Pot Pie
served with
carrot and swede mash

**Jacket Potato with a choice of
toppings**

Thursday

Cheesy Chicken Rice
served with sweetcorn kernels

**Jacket Potato topped with Quorn
Sausage & BBQ Beans**
served with a green salad

**Jacket Potato with a choice of
toppings**

Friday

Crispy White Fish Fillet
served with chipped potatoes
and petit pois

Vegetable Frittata
served with chipped potatoes and
baked beans

Sweet Treat Friday
Kitchens Choice

**Jacket Potato with a choice of
toppings**

Available everyday
A vibrant salad bar, fresh fruit and yoghurt Bread, milk and water



Menu

Fresh
All our food is cooked fresh
each day

Healthy
Our pasta, rice and breads
are healthy wholemeal
products

checked
We always use
reputable suppliers and
where possible use
local produce





Inspires MAT School Term and Holiday Dates Academic Year 2025-2026

September 2025							October 2025							November 2025							December 2025						
M	T	W	T	F	S	S	M	T	W	T	F	S	S	M	T	W	T	F	S	S	M	T	W	T	F	S	S
									1	2	3	4	5						1	2	1	2	3	4	5	6	7
1	2	3	4	5	6	7	6	7	8	9	10	11	12	3	4	5	6	7	8	9	8	9	10	11	12	13	14
8	9	10	11	12	13	14	13	14	15	16	17	18	19	10	11	12	13	14	15	16	15	16	17	18	19	20	21
15	16	17	18	19	20	21	20	21	22	23	24	25	26	17	18	19	20	21	22	23	22	23	24	25	26	27	28
22	23	24	25	26	27	28	27	28	29	30	31			24	25	26	27	28	29	30	29	30	31				
29	30																										

January 2026							February 2026							March 2026							April 2026						
M	T	W	T	F	S	S	M	T	W	T	F	S	S	M	T	W	T	F	S	S	M	T	W	T	F	S	S
			1	2	3	4							1							1			1	2	3	4	5
5	6	7	8	9	10	11	2	3	4	5	6	7	8	2	3	4	5	6	7	8	6	7	8	9	10	11	12
12	13	14	15	16	17	18	9	10	11	12	13	14	15	9	10	11	12	13	14	15	13	14	15	16	17	18	19
19	20	21	22	23	24	25	16	17	18	19	20	21	22	16	17	18	19	20	21	22	20	21	22	23	24	25	26
26	27	28	29	30	31		23	24	25	26	27	28		23	24	25	26	27	28	29	27	28	29	30			
														30	31												

May 2026							June 2026							July 2026							August 2026						
M	T	W	T	F	S	S	M	T	W	T	F	S	S	M	T	W	T	F	S	S	M	T	W	T	F	S	S
				1	2	3	1	2	3	4	5	6	7			1	2	3	4	5						1	2
4	5	6	7	8	9	10	8	9	10	11	12	13	14	6	7	8	9	10	11	12	3	4	5	6	7	8	9
11	12	13	14	15	16	17	15	16	17	18	19	20	21	13	14	15	16	17	18	19	10	11	12	13	14	15	16
18	19	20	21	22	23	24	22	23	24	25	26	27	28	20	21	22	23	24	25	26	17	18	19	20	21	22	23
25	26	27	28	29	30	31	29	30					27	28	29	30	31			24	25	26	27	28	29	30	
																					31						

- = Schooldays
- = School holidays
- = Bank holidays
- = Weekends
- = Inset Days (non-pupil)

In addition, schools allocate five non-pupil days out of the school days indicated, or the equivalent in disaggregated twilight sessions.

Autumn Term:	Monday 1 September 2025 – Friday 19 December 2025 <i>Half Term 27 October – 31 October</i>	75 days
Spring Term:	Monday 5 January 2026 – Friday 27 March 2026 <i>Half Term 16 February - 20 February</i>	55 days
Summer Term:	Monday 13 April 2026 – Monday 20 July 2026 <i>Half Term 25 May – 29 May, and May Bank Holiday - 4 May</i>	65 days
		195 days

Please note:

The above dates may vary for individual schools, especially Foundation, Voluntary Aided schools and Academies.

You are strongly advised to check with your child's school before making any holiday or other commitments.