

## SCHOOL TERM DATES

25/26

- Monday 22nd December—Christmas Holidays
- Monday 5th January—Non-pupil day
- Tuesday 6th January—Return to school
- Monday 16th February—Half term
- Monday 30th March -Easter Holidays
- Monday 13th April—Return to School
- Monday 25th May—Half Term
- Monday 1st June—Non-pupil Day
- Tuesday 2nd June—Return to School
- Monday 20th July Non-Pupil Day
- Tuesday 21st July—Start of school holidays 2026



SILVER  
END  
ACADEMY  
GROW SHINE SUCCEED

11/11/25

## A Message from Headteacher

Dear Families,

It's been a wonderfully busy couple of weeks at Silver End Academy! Before half term, we explored our value of *Self-Worth*, and since returning, we've been focusing on *Respect and Perseverance* —values that underpin everything we do as a school community.

As part of our learning, we read 'We're All Wonders', a beautiful book that celebrates our differences and reminds us of the importance of kindness and acceptance.

This week, I had the pleasure of meeting with our School Council. They shared how much they enjoy outdoor learning and expressed a real enthusiasm for having more opportunities to learn outside the classroom. They also had some great ideas about how we can develop our lunchtime provision. I'm really looking forward to working with them on these exciting school improvement priorities.

I've also been delighted to see some wonderful writing across the school, particularly the creative poetry produced by our Year 2 and Year 3 pupils – truly inspiring work! During a recent learning walk, I was so impressed by the positive learning behaviours across all classes and how confidently children are beginning to talk about their learning.

Class teachers continue to share regular updates via Class Dojo, so please do take a moment to ask your child what they've been learning today – it's a great way to open up conversations about their school day and helps them reflect on their learning.

Thank you to everyone that came to our Parent Consultations before half term. We hope it was a useful opportunity for you to meet with class teachers and hear about your child's progress so far. Thank you too, for everyone who completed a Parent Questionnaire. I am collating the results and will share them with you soon.

So far this week, we've had our beautiful and moving Year 5 Remembrance Assembly Odd Socks Day on Monday, and Children in Need on Friday.

Thank you, as always, for your continued support,

Mrs Meares

## Meet our Head Pupils

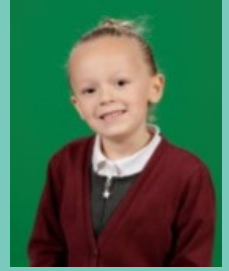
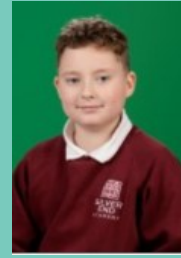
Devon and Connie were voted into their roles by the whole school, including staff. As part of the process, they had to write an application and then make a speech to the rest of the school in assembly. So far, Devon and Connie have shown groups of new parents around the school and have started to lead our Silver Assemblies. They are our first Head Pupils and really embracing the responsibility this role brings.

**Devon (K2)**



**Connie (Everest)**





## Meet our School Council

Our School Council are formed of two representatives per class who have been voted into their post by their peers. They meet fortnightly with Mrs Meares to discuss school improvement priorities and then go back to class council for feedback and to gather the views of their class for the next meeting. School council have to be reliable, sensible pupils who follow our school values and can guide others to do the same.



Ben Nevis– Freddie, Mia



Table– Myla-Mae, Dexter

Kilimanjaro– Lincoln, Penelope



Fuji– Violet, Maddie

Suilven– Eva, Grace



Cook– Charles, Olive

Etna– Hudson, Aurelia

Blanc– Lucas and Lola



Aconcagua– Daley, Evelyn



Snowdon– Sophia, Mary-Lou

Everest– Rowan, George



K2– Olivia, Devon



## Pre loved clothing

If you have any good condition items of socks, underwear, P.E shorts and P.E t-shirts that you no longer require, we would be very grateful for any donations.



## School Car Park

We kindly remind all families that the staff car park is not to be used for drop-off or pick-up at any time, including during Breakfast Club and After School Clubs.

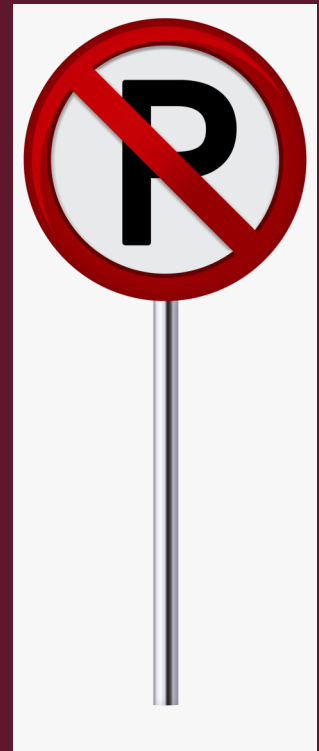
As we have a small car park, it is important that we keep these spaces available for staff and essential deliveries only.

If you have prior agreement from the school office or hold a valid Blue Badge, you may use the designated disabled parking bays.

We appreciate your cooperation in keeping the car park safe and accessible for those who need it.

Thank you for your understanding and support.

Mrs Meares- Headteacher



# HEALTHY SNACKS

Children should only bring fruit or vegetables for their snack at breaktime to help us stay a healthy and nut-free school.



SILVER  
END  
ACADEMY

## Water Bottles

Please make sure your child has a named water bottle in school and you follow the school policy that bottles should only contain water.



## Walking Home Alone

*In Year 5 upwards, with written permission from parents, children are permitted to walk home on their own.*

*In Year 4 and below, children must be collected by a known adult. If parents would like a sibling to collect, they should provide written permission and the sibling should be at least 15 years old. The arrangement also needs to be judged safe by school staff.*

*Kind regards,  
Mrs Meares*



## 'Head Lice is not nice'

We have had a few reported cases of head-lice in school recently. We kindly ask that you check your child's hair regularly and treat if necessary, to help prevent further spread.

Head lice are a common occurrence in school settings and nothing to be alarmed about. With everyone's support, we can manage this quickly and effectively.

Thank you for your cooperation.

## 100 Years of Silver End—Logo Competition

*Put your artistic skills to the test with this exciting competition?*

Wow! Silver End is 100 years old next year and we need a logo to mark this amazing occasion. The logo will be used for all the events & commemorative merchandise.

This is open to **all** pupils of Silver End Academy from Reception to year 6.

We would like you to draw something related to the village, for example the school, the park, the village hall. We would like the following incorporated into your design:

1926 – 2026  
100 years  
Silver End



On the back of your design we need the child's name, age and the Parent/ Carers name & phone number.



Please submit entries by **FRIDAY 14TH NOVEMBER 2025**

## First Aid Procedures

In order to ensure our first aid procedures are as robust and effective as possible, we are introducing a small change. From now on, if your child receives first aid at school, they will be given an **“I've been given First Aid”** sticker, in addition to the usual first aid slip.

The sticker will act as a helpful reminder if the slip is misplaced and will also alert any adult in school that your child has received first aid. If your child comes out of school wearing a sticker, you can ask them what happened and check their first aid slip for more details.

Please note that our current system for informing parents about any bumps to the head will remain the same, as it continues to work well.

Thank you for your continued support in helping us keep our children safe and cared for at school.



## School Photographs



The school photographers will be visiting the school on **Monday 17<sup>th</sup> November**. All children will be having their individual photographs taken during school time. **(Please note we will NOT be taking any sibling photographs during the school day)**

If you would like a sibling photograph, our school photographers will be available from 8.00am in the school hall, they will continue taking these until all required group photographs have been taken. Please go to the double white doors near the hall.

Once your children have had their photograph taken, please leave via the double white doors and wait for the school gates to open, as normal.

On this day, all children are requested to wear their full **school uniform** for the photo session. (Including their school cardigan, jumper or fleece)

For students who normally wear **PE kits** on Mondays, we kindly ask that they come to school in their **school uniform** and bring their PE kit with them to change into later in the day.

### Is your Attendance on Track?

#### 100% Attendance

- Well Done!
- Our target for all students
  - You are right on track

#### 97% Attendance

- Well Done, keep it up
- You are on the right track for success keep it up
  - 6 Days Absence = 30 hours of lost learning

#### 95% Attendance

- We're Concerned
- Poor attendance gives you less chance of success
  - 10 Days Absence = 50 hours of lost learning

#### 90% Attendance

- Seriously Worried
- Very poor attendance has a serious impact on your education
  - 19 Days Absence = 95 hours of lost learning

## Yellow Day

Silver End Academy raised  
£162.65



## Celebrating your child's birthday

Following feedback from parent questionnaires and exploring parental engagement opportunities, we are delighted to be able to start offering an option for parents (or another family member) to come into school to have lunch with your child on your child's birthday. One adult can book in to have lunch, on or near, your child's birthday. There will be an option on Parent mail for you to buy an adult lunch, priced at £3.20, and then we ask that you email the school office at least a week in advance so we can book you in and we can let our catering team know. If you have missed your child's birthday (September – now), please don't worry – find a convenient day and book to have lunch this term or next term. When you come to school, your child will meet you at the office and you'll be taking to the hall to have lunch. Once you've finished eating, you'll be brought back to the school office.

I really hope this gives you a lovely opportunity to spend time together on this special day.

Best wishes,

Mrs Meares



You are invited to drop in at our

# COFFEE MORNING

IN THE SCHOOL HALL  
8.45am - 10.30am

Friday 12<sup>th</sup>  
December  
2025

We will be joined by Mrs Meares,  
Mrs Gigg, Mrs Hatchman and  
Anita Austin from the  
Essex Child & Family  
Wellbeing service.

# NON-UNIFORM DAY!

FRIDAY 14<sup>TH</sup> NOVEMBER 2025

Wear something  
**spotty**  
and bring in donations

ALL DONATIONS WILL BE GOING DIRECTLY TO CHILDREN IN NEED.  
HELP US MAKE A DIFFERENCE!



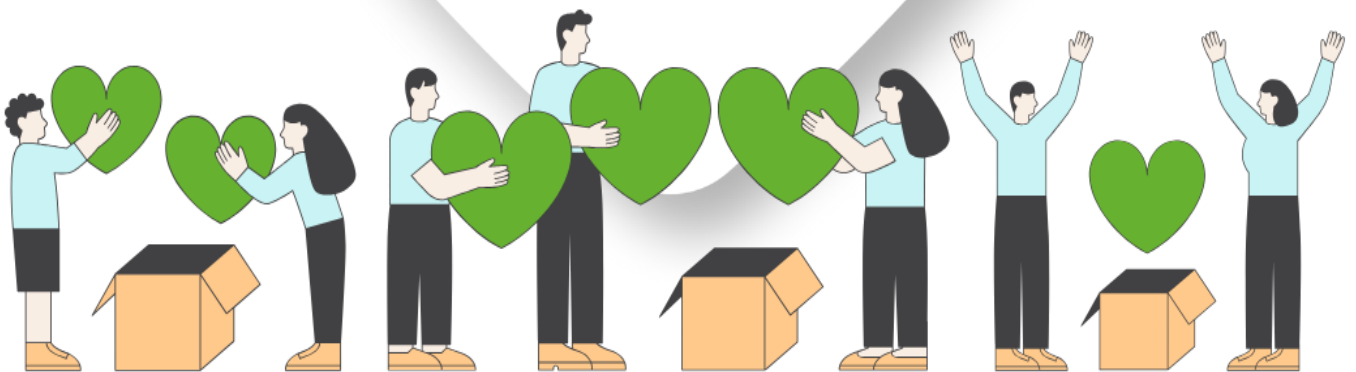
**BBC**  
**CHILDREN**  
**IN NEED**



**SILVER**  
**END**  
ACADEMY



## Local Giving



**We've been chosen by the East of England Co-op's Silver End food store as their Local Giving charity for winter.**

**Over the next three months, they'll be:**

- 💰 Collecting donations for us
  - 📣 Raising awareness of our work
- Pop in store to get involved and donate!

[#LocalGiving](#) [#SupportingCommunities](#) [#SupportLocal](#)

---



## EYFS– Outdoor area Donations

We are hoping to develop and improve our EYFS outdoor area and wondered if anybody had access to these types of resources that they would be happy to donate to us?



We are particularly looking for:

Tyres of various sizes

Cones

Road signs

Construction helmets / high visibility cloaks

wooden beams

guttering

pallets

cable drums

stones / pebbles

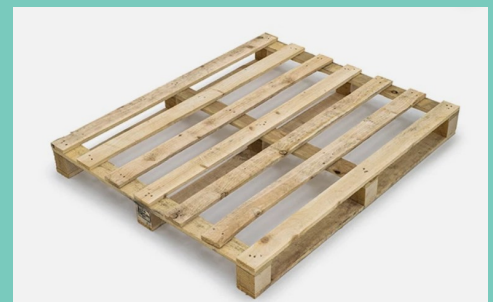
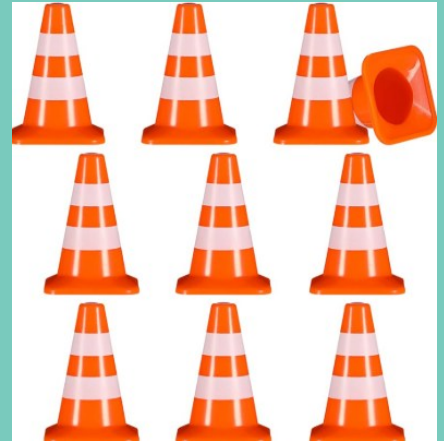
Astro off cuts

pots and pans

Please let us know if you are able to help towards this. We would also love any green fingered parents to advise on the best types of hardy plants for the outdoors (preferably low maintenance)

Thank you kindly,

Mrs Fenty



## Mount Olympus – Learning and Family Engagement

Mount Olympus have taken part in a range of exciting learning experiences and family engagement activities over the past few weeks. We were thrilled to have such a fantastic turnout for **Story Time**, and to welcome a **parent hygienist** who shared valuable tips on **looking after our teeth**. We also enjoyed a visit from a **community nurse**, helping us make meaningful links to our current topic, *Funny Bones!*

It's been wonderful to see our families getting involved and supporting the children's learning. Thank you to everyone who joined us.



## Not Forgotten

Gun shots from left and right.  
Soldiers fighting with all their  
might.

Roads are coloured red,  
where all the soldiers bled.

Dogs and horses worked  
alongside. Supporting their  
soldiers with pride.

The fight went on lots of  
loved ones gone.

WE WILL REMEMBER  
THEM



By Emily (Y5) This beautiful piece was created at home

## Y6 and EYFS Buddies

This week, Y6 met their EYFS buddies for the first time. They had a great time getting to know each other and sharing stories. We've introduced the buddy system for the first time this academic year – it provides a lovely support for our new children and a great way for Y6 to show responsibility and their maturity.





**SILVER  
END  
ACADEMY**

We have created a pantry at school to help local families. If you would like to donate any non perishable items, please leave at the school office. The Pantry will be open for browsing at the below times. We are well stocked so do please take what you need.

# PANTRY

**WE'RE HERE TO HELP**

**TUESDAYS AND THURSDAYS**

2.45 - 3.15pm



## Parking Outside School

When dropping off/picking children from school, please can we remind you that you must not park or stop on the yellow lines outside school between 8-9.30 am and again 2.30-4pm.

We have recently had several incidents where children have been put in danger by drivers stopping, reversing and clearly ignoring the yellow lines and the highway code - Please be considerate and Keep our children safe!! We have invested over £300 for new signage to help remind drivers to keep our children safe.

If you are concerned that poor parking has caused a safety issue, has blocked your drive, is not following the law or has caused the blockage of the road for emergency vehicles, please follow the links indicated in this website from Essex Police and report the car in question.

<https://www.essex.police.uk/advice/advice-and-information/asb/asb/antisocial-behaviour/nuisance-parking/>



**Engines  
off** when you  
drop off



Make your PLEDGE today and help us to become an idling aware school

Let's drive  
down air  
pollution



[www.braintree.gov.uk/dropoffpledge](http://www.braintree.gov.uk/dropoffpledge)

 Braintree  
District Council

## Lost Property

We are starting to accumulate unnamed lost property.

Please remember to name every item of school uniform and PE kit.

If you are missing any items please feel free to come to the office.



## Parking Reminder

Please be careful when parking your car at school drop off and pick up. We have been made aware of an incident in which a car reversed into 2 different cars last week.

If you see an incident please report it to: <https://north.parkingpartnership.org/enforcement-requests/>

North Essex Parking Partnership will respond to every report and the more reports they get the better informed they are on how they can support the local area and the school improve parking issues.



## Dates for your Diary



Friday 14th November - Children in Need 2025- Children to wear spots.

Monday 17th November - Individual photos

Tuesday 9th December - IROCK Christmas Assembly

Wednesday 10th December - Christmas Lunch and Christmas Jumper Day

Monday 15th December - KS1 Christmas Production @ 1.30pm

Tuesday 16th December - EYFS Christmas Production @ 2pm

Tuesday 16th December - KS2 Christmas Production @ 3.30pm

Wednesday 17th December - Headteachers Award Assembly

Wednesday 17th December - KS1 Christmas Production @ 3.30pm

Thursday 18th December - KS2 Christmas Production @ 1.30pm





# Silver End Academy

Grow ♦ Flourish ♦ Succeed

## Parent Tour Dates

**Was your child born between September 2021 and August 2022 and is now due to start school in September 2026?**

Come and take a look around our school by visiting us on one of our tour dates:

- Wednesday 15th October at 9am
- Friday 17th October at 9am
- Tuesday 11th November at 9am
- Tuesday 25th November at 5pm

Please call the school office on 01376 583353 to book a space or by emailing [adminsil@inspiresmat.co.uk](mailto:adminsil@inspiresmat.co.uk)

# PTA NEWSLETTER

🌟 Find us on Facebook ~ @silverendacademypta 🌟

## PTA NEWS

We recently held our Annual General Meeting, and it was wonderful to see some new faces join us! A big congratulations to Sarah-Jane, who has been elected as our new Chair. We're thrilled to have her leading the team. We're also delighted to welcome Mrs. Fenty as our new school liaison. Her support will be invaluable in strengthening the connection between the PTA and the school community.

The PTA is currently in discussion with the school to decide how the funds we've raised will be used to best support our pupils, staff, and school environment. We can't wait to share more details soon.

### ✨ LOOKING AHEAD ✨

We'll be turning our attention to festive activities! We'll be organising Christmas card designs and PTA Logo design competition, so keep an eye out for more details coming your way soon.

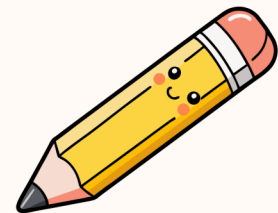
## CONTACT US

Find us on Facebook  
@Silverendacademypta  
[www.facebook.com/silverendacademypta](http://www.facebook.com/silverendacademypta)  
PTA Email  
[silverendpta@gmail.com](mailto:silverendpta@gmail.com)

## OUR TOTALS

COLOUR RUN  
We raised an amazing

**£364.43**



## WHAT IS A PTA?

The PTA (Parent Teacher Association) works in partnership with our school to create the best possible experience for our children. We raise funds to support projects and resources that go beyond the school budget, such as books, equipment, trips, and events. We help bring families, teachers, and staff together through fun activities and community events that strengthen school spirit. Most importantly, the PTA gives parents and carers a chance to share their ideas and have a voice in shaping the future of our school.

## IMPORTANT DATES

FRIDAY 12<sup>TH</sup>  
DECEMBER

CHRISTMAS  
FAMILY BINGO

SATURDAY 27<sup>TH</sup>  
FEBRUARY

SILENT DISCO -  
ADULT ONLY

# Menu for week commencing 10/11/2025 Week 2

## Silver End Academy

Week 2

### Monday

**Quorn Dippers in a Wholemeal Bun**  
served with  
baked sweet potato wedges and  
sweetcorn

**Vegetable Thai Noodles**  
mixed stir fried vegetables with  
Tofu

**Jacket Potato with a choice of  
toppings**

### Tuesday

**Chicken Tikka Masala**  
served with fluffy rice  
and kachumber salad

**Ratatouille Pasta with Quorn**  
served with a crisp mixed salad

**Jacket Potato with a choice of  
toppings**

### Wednesday

**Cottage Pie**  
served with carrots and peas

**Lentil Pot Pie**  
served with  
carrot and swede mash

**Jacket Potato with a choice of  
toppings**

### Thursday

**Cheesy Chicken Rice**  
served with sweetcorn kernels

**Jacket Potato topped with Quorn  
Sausage & BBQ Beans**  
served with a green salad

**Jacket Potato with a choice of  
toppings**

### Friday

**Crispy White Fish Fillet**  
served with chipped potatoes  
and petit pois

**Vegetable Frittata**  
served with chipped potatoes and  
baked beans

**Sweet Treat Friday**  
Kitchens Choice

**Jacket Potato with a choice of  
toppings**

Available everyday  
A vibrant salad bar, fresh fruit and yoghurt Bread, milk and water



**Fresh**  
All our food is cooked fresh  
each day

**Healthy**  
Our pasta, rice and breads  
are healthy wholemeal  
products

**checked**  
We always use  
reputable suppliers and  
where possible use  
local produce



# Menu

# Menu for week commencing 17/11/2025 Week 3

## Silver End Academy

Week 3

### Monday

**Pizza Day**  
**Cheese & Tomato**  
served with mixed leaves  
and five bean salad

### Tuesday

**Sticky Chicken**  
served with fluffy rice and  
sweetcorn

### Wednesday

**Roast Gammon**  
served with crispy roast potatoes,  
sliced carrots, green beans and  
gravy

### Thursday

**Rich Beef Pie**  
served with creamy mash,  
carrots and broccoli

### Friday

**Freshly Prepared Chicken Nuggets**  
served with crispy chips, baked  
beans or petit pois  
**Sweet Treat Friday**  
Kitchens Choice

**Lentil Moussaka**  
served with a mixed salad

**Jacket Potato with a choice of  
toppings**

**Sausage & Mushroom Goulash**  
served with fluffy rice

**Jacket Potato with a choice of  
toppings**

**Curry Tofu and Potato Wrap**  
served with corn on the cob

**Jacket Potato with a choice of  
toppings**

**Bean Burrito**  
served with traffic light salad  
(crispy lettuce, tomatoes and  
sweetcorn)

**Jacket Potato with a choice of  
toppings**

**Cheese and Tomato Whirl**  
served with crispy chips,  
baked beans or petit pois

**Jacket Potato with a choice of  
toppings**



**Fresh**  
All our food is cooked fresh  
each day

**Healthy**  
Our pasta, rice and breads  
are healthy wholemeal  
products

**checked**  
We always use reputable  
suppliers and where  
possible use local produce



Available everyday  
A vibrant salad bar, fresh fruit and yoghurt, bread, milk and water

# Menu



## Inspires MAT School Term and Holiday Dates Academic Year 2025-2026

September 2025							October 2025							November 2025							December 2025						
M	T	W	T	F	S	S	M	T	W	T	F	S	S	M	T	W	T	F	S	S	M	T	W	T	F	S	S
									1	2	3	4	5						1	2	1	2	3	4	5	6	7
1	2	3	4	5	6	7	6	7	8	9	10	11	12	3	4	5	6	7	8	9	8	9	10	11	12	13	14
8	9	10	11	12	13	14	13	14	15	16	17	18	19	10	11	12	13	14	15	16	15	16	17	18	19	20	21
15	16	17	18	19	20	21	20	21	22	23	24	25	26	17	18	19	20	21	22	23	22	23	24	25	26	27	28
22	23	24	25	26	27	28	27	28	29	30	31			24	25	26	27	28	29	30	29	30	31				
29	30																										

January 2026							February 2026							March 2026							April 2026						
M	T	W	T	F	S	S	M	T	W	T	F	S	S	M	T	W	T	F	S	S	M	T	W	T	F	S	S
			1	2	3	4							1							1			1	2	3	4	5
5	6	7	8	9	10	11	2	3	4	5	6	7	8	2	3	4	5	6	7	8	6	7	8	9	10	11	12
12	13	14	15	16	17	18	9	10	11	12	13	14	15	9	10	11	12	13	14	15	13	14	15	16	17	18	19
19	20	21	22	23	24	25	16	17	18	19	20	21	22	16	17	18	19	20	21	22	20	21	22	23	24	25	26
26	27	28	29	30	31		23	24	25	26	27	28		23	24	25	26	27	28	29	27	28	29	30			
														30	31												

May 2026							June 2026							July 2026							August 2026						
M	T	W	T	F	S	S	M	T	W	T	F	S	S	M	T	W	T	F	S	S	M	T	W	T	F	S	S
				1	2	3	1	2	3	4	5	6	7			1	2	3	4	5						1	2
4	5	6	7	8	9	10	8	9	10	11	12	13	14	6	7	8	9	10	11	12	3	4	5	6	7	8	9
11	12	13	14	15	16	17	15	16	17	18	19	20	21	13	14	15	16	17	18	19	10	11	12	13	14	15	16
18	19	20	21	22	23	24	22	23	24	25	26	27	28	20	21	22	23	24	25	26	17	18	19	20	21	22	23
25	26	27	28	29	30	31	29	30					27	28	29	30	31			24	25	26	27	28	29	30	
																					31						

- = Schooldays
- = School holidays
- = Bank holidays
- = Weekends
- = Inset Days (non-pupil)

In addition, schools allocate five non-pupil days out of the school days indicated, or the equivalent in disaggregated twilight sessions.

<b>Autumn Term:</b>	Monday 1 September 2025 – Friday 19 December 2025 <i>Half Term 27 October – 31 October</i>	75 days
<b>Spring Term:</b>	Monday 5 January 2026 – Friday 27 March 2026 <i>Half Term 16 February - 20 February</i>	55 days
<b>Summer Term:</b>	Monday 13 April 2026 – Monday 20 July 2026 <i>Half Term 25 May – 29 May, and May Bank Holiday - 4 May</i>	65 days
		195 days

**Please note:**  
The above dates may vary for individual schools, especially Foundation, Voluntary Aided schools and Academies.  
You are strongly advised to check with your child's school before making any holiday or other commitments.