

SCHOOL TERM DATES

25/26

- Friday 24th October - Non-pupil day
- Monday 27th October—Half Term
- Monday 22nd December—Christmas Holidays
- Monday 5th January—Non-pupil day
- Tuesday 6th January—Return to school
- Monday 16th February—Half term
- Monday 30th March -Easter Holidays
- Monday 13th April—Return to School
- Monday 25th May—Half Term
- Monday 1st June—Non-pupil Day
- Tuesday 2nd June—Return to School
- Monday 20th July Non-Pupil Day
- Tuesday 21st July—Start of school holidays 2026



SILVER
END
ACADEMY
GROW SHINE SUCCEED

29/09/25

A Message from Headteacher

Dear Parents and Carers,

It's been a busy and exciting couple of weeks since our first newsletter!

Our new curriculum for History, Geography, Science, and Music has been really well received by both staff and children. As I've walked around the school, it's been a pleasure to see some truly engaging and creative lessons taking place.

Everyone has made a brilliant start with their writing. Mrs Wright and I have enjoyed looking through books across the school and have been really impressed by the standard of work. This term, we're focusing on handwriting, presentation, and ensuring that basic grammar and punctuation are consistently used in every piece of writing.

Last Friday, we were proud to host our annual Macmillan Coffee Morning. Thank you to everyone who came along, and a special thanks to Mrs Gigg and her fantastic team of volunteers. We'll share the final fundraising total soon — thank you for supporting such an important cause.

Also on Friday, the PTA Colour Run brought lots of fun and energy to the school field while raising valuable funds for our school. A huge thank you to our amazing PTA for all their hard work in organising this brilliant event!

This week, we're looking forward to the start of our daily assemblies. On Monday, I talked to the children about our school value 'Curiosity', and on Wednesday, we're excited to have our Year 4 classes leading our Harvest Assembly.

A big Congratulations goes to Mrs Chaplin and her family as she welcomed her baby boy on Saturday 27th September 2025, mum and baby are both doing well. In her absence, Miss Brown and Miss La Veys have joined the school Senior Leadership Team and can be an additional point of contact for parents. Miss Brown has responsibility for Curriculum across the school and Miss La Veys is a lead practitioner, supporting teaching and learning.

Finally, thank you for your support with the change to morning routines — the children have adapted brilliantly to coming straight into school.

We hope you enjoy the rest of the newsletter and seeing how everyone at school continues to Grow, Shine, Succeed.

I look forward to working with you all and getting to know you all better,

Mrs Meares— Headteacher

Pre loved clothing

If you have any good condition items of socks, underwear, P.E shorts and P.E t-shirts that you no longer require, we would be very grateful for any donations.



School Car Park

We kindly remind all families that the staff car park is not to be used for drop-off or pick-up at any time, including during Breakfast Club and After School Clubs.

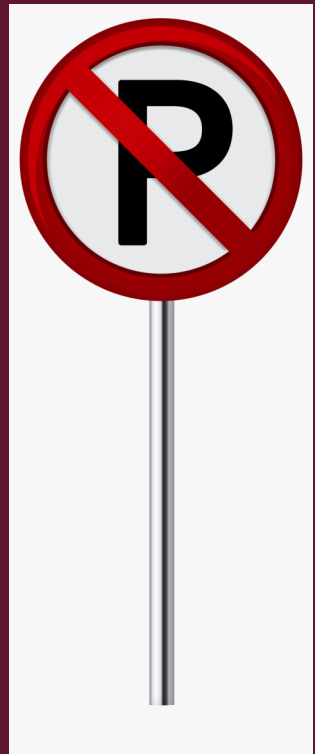
As we have a small car park, it is important that we keep these spaces available for staff and essential deliveries only.

If you have prior agreement from the school office or hold a valid Blue Badge, you may use the designated disabled parking bays.

We appreciate your cooperation in keeping the car park safe and accessible for those who need it.

Thank you for your understanding and support.

Mrs Meares- Headteacher



Healthy Snacks

We have noticed an increase in snacks in school such as crisps and cakes. Children are encouraged to bring in a piece of fruit or vegetables for a snack at breaktime if they need something to eat. This is to support a healthy diet but also allows us to continue to be an entirely **nut free school**. After the October half term, children will be only be allowed to have fruit / vegetables as their snack so we'd encourage you to start making these changes. If your child is in Key Stage 1 or EYFS, they are given free fruit every day in school, though can bring in their own if they'd like to.

Thank you for your continued support.

Water Bottles

Please make sure your child has a named water bottle in school and you follow the school policy that bottles should only contain water.



Walking Home Alone

In Year 5 upwards, with written permission from parents, children are permitted to walk home on their own.

In Year 4 and below, children must be collected by a known adult. If parents would like a sibling to collect, they should provide written permission and the sibling should be at least 15 years old. The arrangement also needs to be judged safe by school staff.

*Kind regards,
Mrs Meares*



‘Head Lice is not nice’

We have had a few reported cases of headlice in school recently. We kindly ask that you check your child’s hair regularly and treat if necessary, to help prevent further spread.

Head lice are a common occurrence in school settings and nothing to be alarmed about. With everyone’s support, we can manage this quickly and effectively.

Thank you for your cooperation.



Missing Scooter!!



Dear Parents/Carers,

A scooter has unfortunately gone missing from school sometime over the past two weeks. It was last seen in the area where children leave their bikes.

Please see the attached photo for reference.

If you have any information or may have seen the scooter, please let us know at the school office.

Thank you for your support.

The School Office



In support of

YOUNG Mi MINDS

WORLD
MENTAL
HEALTH
DAY



World Mental Health Day – Friday 10th October ‘Hello Yellow Fundraiser’

Dear Parents/Carers,

On **Friday 10th October** we will be celebrating World Mental Health Day again as a school community. We will be celebrating with lots of mindfulness activities across the school including yoga, walk and talks, breathing strategies, circles times and sharing lots of positivity in our classes!

To celebrate, we would like to invite the children to **wear non-uniform and incorporate something yellow for our ‘Hello Yellow’ fundraiser**. This could be a t shirt, a hairband or even yellow socks. We would welcome any donations of £1 to go towards the charity ‘Young Minds’, that work hard to support young people with their mental health and wellbeing. Yellow Ribbons will be available also, to purchase for £1 from the office.

We would also like to encourage children to celebrate at home! As a challenge, we would love to see the children sharing some of their favourite things that help them to bring a smile to their face via dojo. This could be a picture of them with someone that makes them smile, or something they like to do to make them feel happy!

Thank you for your continued support.



Thank you!
Miss Anderson



PTA NEWSLETTER

🌻 Find us on Facebook ~ @silverendacademypta 🌻

PTA ANNOUNCEMENTS

PTA ANNUAL GENERAL MEETING

We will be holding our Annual General Meeting (AGM) on Monday 13th October, straight after school pick up.

The AGM is our chance to look back at what we've achieved together over the past year, share how funds have been raised and spent, and talk about plans for the year ahead. It's also when committee roles are elected. Everyone is welcome parents, carers, and staff. So please do come along and find out more about how the PTA supports our school.

🌟 LOOKING AHEAD 🌟

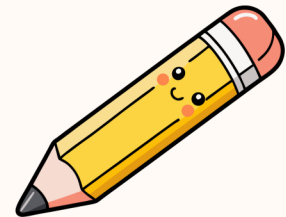
It might feel early, but soon we'll be turning our attention to festive activities! We'll be organising Christmas card designs and PTA Logo design competition, so keep an eye out for more details coming your way soon.

CONTACT US

Find us on Facebook
@Silverendacademypta
www.facebook.com/silverendacademypta
PTA Email
silverendpta@gmail.com

THANK YOU

Thank You From the Bottom of Our Hearts. We are absolutely over the moon with the love and support you've shown by purchasing tickets for our very first Colour Run!



WHAT IS A PTA?

The PTA (Parent Teacher Association) works in partnership with our school to create the best possible experience for our children. We raise funds to support projects and resources that go beyond the school budget, such as books, equipment, trips, and events. We help bring families, teachers, and staff together through fun activities and community events that strengthen school spirit. Most importantly, the PTA gives parents and carers a chance to share their ideas and have a voice in shaping the future of our school.

IMPORTANT DATES

- **FRIDAY 26TH SEPTEMBER**
COLOUR RUN - 3.15PM
- **MONDAY 13TH OCTOBER**
AGM - PM
STRAIGHT AFTER SCHOOL
- **SATURDAY 27TH FEBRUARY**
SILENT DISCO - ADULT ONLY



**SILVER
END
ACADEMY**

We have created a pantry at school to help local families. If you would like to donate any non perishable items, please leave at the school office. The Pantry will be open for browsing at the below times. We are well stocked so do please take what you need.

PANTRY

WE'RE HERE TO HELP

TUESDAYS AND THURSDAYS

2.45 - 3.15pm



EYFS Little Wandle Phonic Workshop

Monday 29th September 2025 @ 3.15pm
(Mount Olympus / Mount Rushmore)



LittleWandle

TEACH READING CHANGE LIVES



Little Wandle
Foundations

Little Wandle
Spelling

Little Wandle
Fluency

Engines off

When you
drop off



Make your PLEDGE today and help us to become an idling aware school



Let's drive
down air
pollution



www.braintree.gov.uk/dropoffpledge

 Braintree
District Council



Dates for your Diary



Wednesday 1st October - Harvest Festival @2.30pm
(YEAR 4 PARENTS ONLY)

Friday 10th October - World Mental Health Day- Children to wear something yellow- non-school uniform.

Tuesday 21st- October - Parent Consultations

Thursday 23rd October - Parent Consultations

Tuesday 11th November - Year 5 Remembrance Assembly @ 2.20pm
(YEAR 5 PARENTS ONLY)

Friday 14th November - Children in Need 2025- Children to wear spots.

Monday 17th November - Individual photos

Tuesday 9th December - IROCK Christmas Assembly

Wednesday 10th December - Christmas Lunch and Christmas Jumper Day

Monday 15th December - KS1 Christmas Production @ 1.30pm

Tuesday 16th December - EYFS Christmas Production @ 2pm

Tuesday 16th December - KS2 Christmas Production @ 3.30pm

Wednesday 17th December - Headteachers Award Assembly

Wednesday 17th December - KS1 Christmas Production @ 3.30pm

Thursday 18th December - KS2 Christmas Production @ 1.30pm





Silver End Academy

Grow ♦ Flourish ♦ Succeed

Parent Tour Dates

Was your child born between September 2021 and August 2022 and is now due to start school in September 2026?

Come and take a look around our school by visiting us on one of our tour dates:

- Wednesday 15th October at 9am
- Friday 17th October at 9am
- Tuesday 11th November at 9am
- Tuesday 25th November at 5pm

Please call the school office on 01376 583353 to book a space or by emailing adminsil@inspiresmat.co.uk

Lost Property

We are starting to accumulate unnamed lost property.

Please remember to name every item of school uniform and PE kit.

If you are missing any items please feel free to come to the office.



Parking Outside School

When dropping off/picking children from school, please can we remind you that you must not park or stop on the yellow lines outside school between 8-9.30 am and again 2.30-4pm.

We have recently had several incidents where children have been put in danger by drivers stopping, reversing and clearly ignoring the yellow lines and the highway code - Please be considerate and Keep our children safe!! We have invested over £300 for new signage to help remind drivers to keep our children safe.

If you are concerned that poor parking has caused a safety issue, has blocked your drive, is not following the law or has caused the blockage of the road for emergency vehicles, please follow the links indicated in this website from Essex Police and report the car in question.

<https://www.essex.police.uk/advice/advice-and-information/asb/asb/antisocial-behaviour/nuisance-parking/>



Mid Essex START WELL Roadshows



IF YOU'VE GOT A LITTLE ONE UNDER 5, THESE DROP-IN EVENTS ARE FOR YOU!

Whether you're getting ready for preschool or just looking for a bit of support, the **Start Well Roadshows** are here to help.

You'll find **friendly faces**, **expert advice**, and **loads of useful info** on things like *toilet training*, *speech and language*, *SEND support*, *starting school* and much much more.

There'll be fun activities to keep little ones busy while you chat with professionals and peer supporters who really understand what it's like.

It's all free, drop-in, and relaxed – just turn up and see what's on offer!

Dates, times & locations of the roadshows

Maldon Area

- Wed 15th Oct
1-3 PM
Maldon Library
- Tues 28th Oct
10 - 12 PM,
Dengie Family Hub
Delivery Site

Braintree Area

- Wed 22nd Oct
2-4 PM
Carousel Family
Hub
- Wed 29th Oct
Time 11-1pm,
Witham Library

Chelmsford Area

- Sat 18th Oct
10:30-12:30,
Chelmsford
Library

For more information:

Visit: www.tlc-essex.info/resource/mid-essex-start-well-roadshows/

Or scan
the QR
code



MID ESSEX CHILDREN'S PARTNERSHIP

Working together to ensure all children & young people in Mid Essex get the best start in life

If you have any questions please email:
C&FPartnershipLeads@essex.gov.uk

Our school environment

I'd like to take a moment to remind everyone about the importance of respecting our school grounds. Recently, there have been a few concerns raised, and we'd appreciate your support in addressing them together.

Please can I remind everyone to use appropriate language while on school premises. We've had some reports of poor language being used, and as we are working with young children to encourage respectful and positive communication at all times, we need this modelled at all times.

Additionally, we've noticed incidents of urination occurring on school property rather than in the designated toilets. We understand that with younger children accidents happen and potty training needs to happen but please do use the facilities on site rather than the school grounds.

Finally, our beautiful cherry blossom tree at the front of the school is a much-loved part of our environment. We kindly ask that children avoid hanging or swinging from its branches, as this can cause long-term damage to the tree.

Thank you, as always, for your continued support and partnership in helping us maintain a safe, respectful, and welcoming environment for all.



Menu for week commencing 29/09/2025 Revised Week 2

Silver End Academy

Monday

Brunch Lunch

Sausage, Bacon, Hash Brown Bites, Baked Beans and Egg

Vegetable Frittata

Served with Hash Brown Bites and Baked Beans

Jacket Potato with a choice of toppings

Tuesday

BBQ Breaded Chicken

served with potato wedges and corn on the cob

Cheese and onion Flan - V

served with potato wedges and corn on the cob

Jacket Potato with a choice of toppings

Wednesday

Picnic Day

A choice of Ham, Cheese - V or Tuna in a Baguette served with crunchy vegetable sticks, Crisps, Raisins, choice of Fruit and Choice of drink

Thursday

Homemade Pizza with a choice of toppings

Pepperoni or Cheese and tomato - V
Served with Salad

Jacket Potato with a choice of toppings

Dessert- Angel Delight

Friday

Jumbo Fish Fingers

served with Crispy Chips, peas and Baked Beans

Halloumi Wraps

Served with Crispy Chips Peas

Jacket Potato with a choice of toppings

Sweet Treat Friday

Kitchens Choice

Available everyday

A healthy salad bar, fresh fruit, and yoghurt, water and milk

Week 2



Menu

Fresh

All our food is cooked fresh each day

Healthy

Our pasta, rice and breads are healthy wholemeal products

Checked

We always use reputable suppliers and where possible use local produce



Menu for week commencing 06/10/2025 Week 3

Silver End Academy

Week 3

Monday

Pork Meatballs in Tomato Sauce
Served with Pasta and Salad

Veggie Balls in Tomato Sauce
Served with Pasta and Salad



Jacket Potato with a choice of toppings

Tuesday

Homemade Sausage Rolls
served with diced potatoes and sweetcorn

Creamy Sweet Potato Curry
served with fluffy rice and salad

Jacket Potato with a choice of toppings



Wednesday

Roast Gammon
served with roast potatoes, Carrots and Broccoli

Cheesy BBQ Quorn Style Fillet
served with crushed Roast Potatoes, Carrots and Broccoli

Jacket Potato with a choice of toppings

Fresh
All our food is cooked fresh each day

Thursday

Sticky Chicken
served with baked jacket wedges and corn on the cob

Roasted Vegetable Tart
served with baked jacket wedges and corn on the cob

Jacket Potato with a choice of toppings

Healthy
Our pasta, rice and breads are healthy wholemeal products

Friday

Fish Fingers
served with crispy chips and peas and Baked Beans

Halloumi Burger
served with crispy chips, baked beans and peas

Jacket potato with a choice of toppings

Checked
We always use reputable suppliers and where possible use local produce

Sweet Treat Friday
Kitchens Choice

Available everyday
A healthy salad bar, fresh fruit, and yoghurt, water and milk



Menu



Inspires MAT School Term and Holiday Dates Academic Year 2025-2026

| September 2025 | | | | | | | October 2025 | | | | | | | November 2025 | | | | | | | December 2025 | | | | | | |
|----------------|----|----|----|----|----|----|--------------|----|----|----|----|----|----|---------------|----|----|----|----|----|----|---------------|----|----|----|----|----|----|
| M | T | W | T | F | S | S | M | T | W | T | F | S | S | M | T | W | T | F | S | S | M | T | W | T | F | S | S |
| | | | | | | | | | 1 | 2 | 3 | 4 | 5 | | | | | | 1 | 2 | 1 | 2 | 3 | 4 | 5 | 6 | 7 |
| 1 | 2 | 3 | 4 | 5 | 6 | 7 | 6 | 7 | 8 | 9 | 10 | 11 | 12 | 3 | 4 | 5 | 6 | 7 | 8 | 9 | 8 | 9 | 10 | 11 | 12 | 13 | 14 |
| 8 | 9 | 10 | 11 | 12 | 13 | 14 | 13 | 14 | 15 | 16 | 17 | 18 | 19 | 10 | 11 | 12 | 13 | 14 | 15 | 16 | 15 | 16 | 17 | 18 | 19 | 20 | 21 |
| 15 | 16 | 17 | 18 | 19 | 20 | 21 | 20 | 21 | 22 | 23 | 24 | 25 | 26 | 17 | 18 | 19 | 20 | 21 | 22 | 23 | 22 | 23 | 24 | 25 | 26 | 27 | 28 |
| 22 | 23 | 24 | 25 | 26 | 27 | 28 | 27 | 28 | 29 | 30 | 31 | | | 24 | 25 | 26 | 27 | 28 | 29 | 30 | 29 | 30 | 31 | | | | |
| 29 | 30 | | | | | | | | | | | | | | | | | | | | | | | | | | |

| January 2026 | | | | | | | February 2026 | | | | | | | March 2026 | | | | | | | April 2026 | | | | | | |
|--------------|----|----|----|----|----|----|---------------|----|----|----|----|----|----|------------|----|----|----|----|----|----|------------|----|----|----|----|----|----|
| M | T | W | T | F | S | S | M | T | W | T | F | S | S | M | T | W | T | F | S | S | M | T | W | T | F | S | S |
| | | | 1 | 2 | 3 | 4 | | | | | | | 1 | | | | | | | 1 | | | 1 | 2 | 3 | 4 | 5 |
| 5 | 6 | 7 | 8 | 9 | 10 | 11 | 2 | 3 | 4 | 5 | 6 | 7 | 8 | 2 | 3 | 4 | 5 | 6 | 7 | 8 | 6 | 7 | 8 | 9 | 10 | 11 | 12 |
| 12 | 13 | 14 | 15 | 16 | 17 | 18 | 9 | 10 | 11 | 12 | 13 | 14 | 15 | 9 | 10 | 11 | 12 | 13 | 14 | 15 | 13 | 14 | 15 | 16 | 17 | 18 | 19 |
| 19 | 20 | 21 | 22 | 23 | 24 | 25 | 16 | 17 | 18 | 19 | 20 | 21 | 22 | 16 | 17 | 18 | 19 | 20 | 21 | 22 | 20 | 21 | 22 | 23 | 24 | 25 | 26 |
| 26 | 27 | 28 | 29 | 30 | 31 | | 23 | 24 | 25 | 26 | 27 | 28 | | 23 | 24 | 25 | 26 | 27 | 28 | 29 | 27 | 28 | 29 | 30 | | | |
| | | | | | | | | | | | | | | 30 | 31 | | | | | | | | | | | | |

| May 2026 | | | | | | | June 2026 | | | | | | | July 2026 | | | | | | | August 2026 | | | | | | |
|----------|----|----|----|----|----|----|-----------|----|----|----|----|----|----|-----------|----|----|----|----|----|----|-------------|----|----|----|----|----|----|
| M | T | W | T | F | S | S | M | T | W | T | F | S | S | M | T | W | T | F | S | S | M | T | W | T | F | S | S |
| | | | | 1 | 2 | 3 | 1 | 2 | 3 | 4 | 5 | 6 | 7 | | | 1 | 2 | 3 | 4 | 5 | | | | | | 1 | 2 |
| 4 | 5 | 6 | 7 | 8 | 9 | 10 | 8 | 9 | 10 | 11 | 12 | 13 | 14 | 6 | 7 | 8 | 9 | 10 | 11 | 12 | 3 | 4 | 5 | 6 | 7 | 8 | 9 |
| 11 | 12 | 13 | 14 | 15 | 16 | 17 | 15 | 16 | 17 | 18 | 19 | 20 | 21 | 13 | 14 | 15 | 16 | 17 | 18 | 19 | 10 | 11 | 12 | 13 | 14 | 15 | 16 |
| 18 | 19 | 20 | 21 | 22 | 23 | 24 | 22 | 23 | 24 | 25 | 26 | 27 | 28 | 20 | 21 | 22 | 23 | 24 | 25 | 26 | 17 | 18 | 19 | 20 | 21 | 22 | 23 |
| 25 | 26 | 27 | 28 | 29 | 30 | 31 | 29 | 30 | | | | | 27 | 28 | 29 | 30 | 31 | | | 24 | 25 | 26 | 27 | 28 | 29 | 30 | |
| | | | | | | | | | | | | | | | | | | | | | 31 | | | | | | |

- = Schooldays
- = School holidays
- = Bank holidays
- = Weekends
- = Inset Days (non-pupil)

In addition, schools allocate five non-pupil days out of the school days indicated, or the equivalent in disaggregated twilight sessions.

| | | |
|---------------------|--|----------|
| Autumn Term: | Monday 1 September 2025 – Friday 19 December 2025 <i>Half Term 27 October – 31 October</i> | 75 days |
| Spring Term: | Monday 5 January 2026 – Friday 27 March 2026 <i>Half Term 16 February - 20 February</i> | 55 days |
| Summer Term: | Monday 13 April 2026 – Monday 20 July 2026 <i>Half Term 25 May – 29 May, and May Bank Holiday - 4 May</i> | 65 days |
| | | 195 days |

Please note:
The above dates may vary for individual schools, especially Foundation, Voluntary Aided schools and Academies.
You are strongly advised to check with your child's school before making any holiday or other commitments.