

## SCHOOL TERM DATES

25/26

- Monday 30th March -Easter Holidays
- Monday 13th April—Return to School
- Monday 25th May—Half Term
- Monday 1st June—Non-pupil Day
- Tuesday 2nd June—Return to School
- Monday 20th July Non-Pupil Day
- Tuesday 21st July—Start of school holidays 2026



SILVER  
END  
ACADEMY

GROW SHINE SUCCEED

27/04/2026

## A Message from Headteacher

Dear Parents and Carers,

This week, we are focusing on our core value of **curiosity**, using the story *Rosie Revere, Engineer*. The book has inspired some wonderful discussions about asking questions, exploring ideas and not being afraid to try something new. It has been lovely to see the children embracing this mindset in their learning, showing creativity and resilience when faced with challenges.

Last week, we explored the value of **respect**, sharing the beautiful story *The Big Red Umbrella*, which reminds us that everyone is welcome. The children reflected thoughtfully on how we can show respect to one another in our words and actions, helping to make our school a kind and inclusive place for all.

We were also delighted to celebrate the **100-year anniversary of Silver End** last Friday. It was a truly special occasion, and it was so lovely to see so many families coming together to be part of the celebrations. Events like this really highlight the strength of our school community.

Since returning after the Easter holidays, we have begun using the **school field**, and for the first time, children across the whole school are sharing the same space, rather than being separated. This is something I have been keen to introduce, as it provides a valuable opportunity for siblings and friends across key stages to spend time together. It has also been wonderful to see our older pupils supporting the younger children, demonstrating respect and taking responsibility in a very natural and positive way.

We are looking forward to our **Mini Marathon** this week, where children from across the school will be taking part by running laps of the field. Watching the London Marathon on Sunday is always so inspiring, and it is fantastic that we are able to bring a similar sense of challenge and achievement into school for our children.

We are also looking ahead to our upcoming **sponsored walk**. Last year, this event raised a phenomenal amount of money for the school, and we are hopeful that, with your continued support, it will be just as successful again this year.

Thank you, as always, for your continued support.

Warm regards,

Mrs Meares



## Dates for your Calendar

Friday 24th April– Coffee morning Mental Health support team  
autism workshop 8.45am– 10.30am

Wednesday 29th April– EYFS parents only– Road Safety session at  
9am

Thursday 7th May– Sponsored Walk/Run after school  
(2 miles= 10laps of the field– you can do it over a week or in one go)

Wednesday 3rd June – Friday 5th June– Year 6 Residential

Tuesday 9th June – Year 4—WiseUp Team building in school

Tuesday 16th June- Year 2 Mountfitchet Castle Trip

Wednesday 1st July– Sports Day KS1 Morning and KS2 Afternoon  
(Parents are invited for a picnic Lunch)

Monday 6th July- Year 1 Boydells Farm Trip

Wednesday 8th July - Saffron Music Live Tiny Magic Orchestra  
at Silver End Academy EYFS, Year 1 and Year 2.

Thursday 9th July– Reserve Sports day

SILVER END ACADEMY'S

# SPONSORED WALK/RUN

Join us for:  
Cake stall  
Bottle stall  
Other activities

**Medals for all  
participants.**

**7 MAY, 2026**

EYFS/KS1 - **1 to 5 laps** - 3.15pm

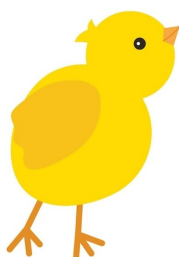
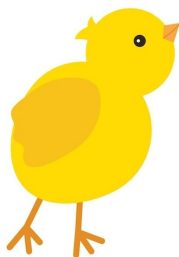
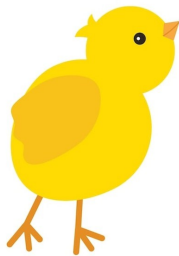
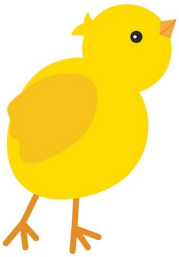
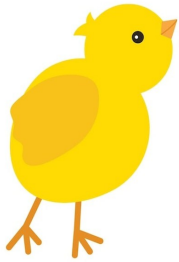
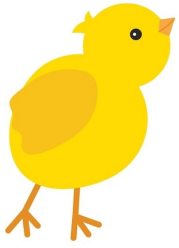
KS2 - 5 - **10 laps** - 3.30pm

**ALL MONEY RAISED  
WILL GO TO  
SCHOOLS FUNDING  
FOR OUTDOOR  
LEARNING AND  
OTHER PROJECTS.**



SILVER  
END  
ACADEMY

# Chicks!



We have been so excited to receive our delivery of live eggs at Silver End. The children have loved watching and exploring the eggs hatching. We were thrilled when our 10 chicks arrived! 3 of the chicks were girls and 7 were boys. The children were excited to have the chicks attend their classrooms throughout the school, for a cuddle and stroke. I hope that you have all heard some egg-citing stories about our chick encounters. They have grown so quickly in a short space of time. Some of our chicks have been rehomed by our school community so we

hope to hear how they are!



## Art Gallery Day

Our annual Art Gallery Day was a fantastic success, with over 100 parents attending to celebrate the children's creativity. The exhibition showcased a vibrant and diverse array of artwork, from intricate 3D ink bottles to expressive watercolour pieces, powerful activism-inspired art, and detailed textile threading. The children were incredibly excited to welcome their families, proudly sharing their work and talking through their artistic journeys with confidence and enthusiasm. It created a warm, buzzing atmosphere throughout the day, with a real sense of pride in every space. Thank you to everyone who came along to support—we're already looking forward to doing it all again next year!



## Parking Reminder

Please be careful when parking your car at school drop off and pick up. We have been made aware that cars are blocking residents driveways.

Please be considerate when parking .

If you see an incident please report it to: <https://north.parkingpartnership.org/enforcement-requests/>

North Essex Parking Partnership will respond to every report and the more reports they get the better informed they are on how they can support the local area and the school improve



## Police dogs—our school premises

As part of our ongoing commitment to support our community, we are proud to let parents know that our local police dog handlers will be using the school premises (out of hours) to train their dogs. This will provide an extra level of security to the school which is good.



# PTA Newsletter

April 2026



**DON'T FORGET TO CHECK OUT THE NEW PTA NOTICE BOARD AT THE FRONT OF THE SCHOOL!  
IT WILL BE UPDATED REGULARLY WITH IMPORTANT INFORMATION AND UPCOMING EVENTS.**

A huge thank you to everyone who attended our Easter Treasure Hunt – it was wonderful to see so many families taking part and enjoying the day.

We are incredibly grateful to all the teachers and volunteers who gave their time to help make the event such a success.

A special thank you also goes to our Year 6 parents for baking and donating such fantastic cakes for the Year 6 bake sale. The money raised will go towards funding the Year 6 leavers' celebrations.

## IMPORTANT DATES

Thursday 16<sup>th</sup>  
July  
Year 6 end of year  
celebration

## OUR TOTALS

EASYFUNDRAISING

**£89.96**

Easter Event

**£447.95**

Year 6 Cake Sale

**£406.20**

## EASYFUNDRAISING

Support Silver End Academy PTA for FREE!

Shop online as normal and retailers will donate to us at no extra cost to you.

Search "easyfundraising Silver End Academy PTA"

## CONTACT US

Find us on Facebook  
@Silverendacademypta  
[www.facebook.com/silverendacademypta](http://www.facebook.com/silverendacademypta)  
PTA Email ~ [silverendpta@gmail.com](mailto:silverendpta@gmail.com)



## MATCH FUNDING

Silver End Academy PTA could DOUBLE what we raise!  
Many employers will match funds raised through volunteering.

- ✓ Ask your employer
- ✓ Check with HR

It's quick and makes a big difference!

## Current Class Attendance %

Olympus - 95.10%

Rushmore— 94.35%

Table- 94.42%

Ben Nevis- 94.05%

Fuji- 93.78%

Kilimanjaro- 95.69%

Suilven- 93.02%

Mount Cook- 96.20%

Mont Blanc- 95.55%

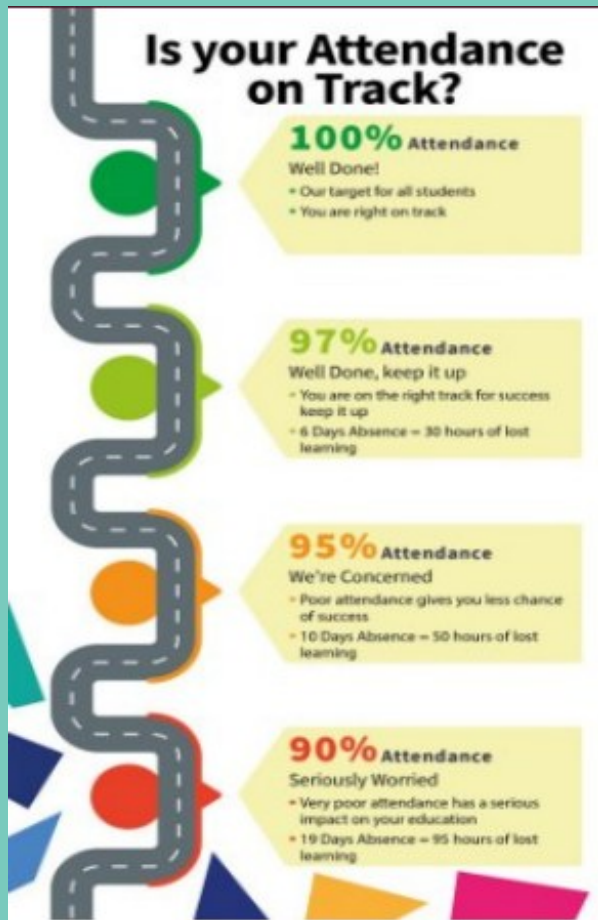
Mount Etna- 97.59%

Snowdon- 94.79%

Aconcagua— 94.44%

Everest- 94.61%

K2- 96.15%





# FIRE WALK

## FUNDRAISING EVENT

20th June 2026 | 7pm | Western  
Arms, Silver End

Supporting local charities and community  
groups

The event is being organised by Boars Tye House in aid of Local charities including Little Wings of Hope, Silver End Academy Pta & Friends of Chatten Free School.

Donations received will be shared equally between the organisations

Scan me to  
sign up



Scan me to  
donate



For more information  
on taking  
part please contact  
Ryan at Boars Tye House  
Ryan@boarstye.co.uk



little wings of hope

Silver End Academy PTA Registered Charity  
in England and Wales: 1216610.

Little Wings of Hope Registered Charity  
in England and Wales: 1213009.

# School Crossing Patrol (SCP) Vacancies

**Are you looking for  
an opportunity to support  
your community?**

There are around 160 School Crossing Patrol sites across the county of Essex. Sometimes known as Lollipop People, SCP Officers work on school days for approximately 40 minutes each morning and afternoon. Hourly rate from £13.00 ph.



Positions available across Essex, including:

Scan this QR code for a  
direct link to the role:



Or for more information and to apply please visit:

[www.workingforessex.com](http://www.workingforessex.com)

Email – [resourcing.team@essex.gov.uk](mailto:resourcing.team@essex.gov.uk)



Essex County Council

# School Crossing Patrol Officer Vacancy

Are you looking for an opportunity to support your local community?

Come and join Essex County Council's School Crossing Patrol Team,  
We currently have a vacancy serving:

## Silver End Academy

**£13.00 per hour**

**Term Time Only - Part Time Hours**

To apply visit [www.workingforessex.com](http://www.workingforessex.com), or call the Resourcing  
Team on **0333 013 5888**.



**INSPIRED TO DO MORE**





## Water Bottles

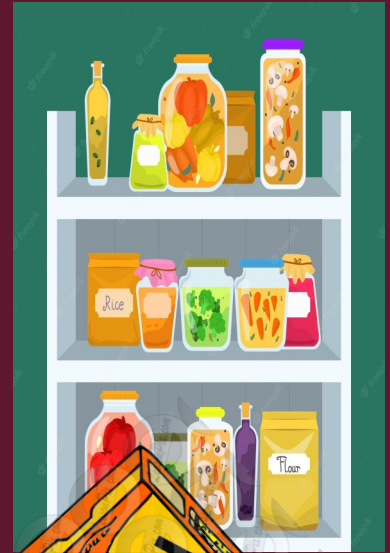
Please make sure your child has a named water bottle in school and you follow the school policy that bottles should only contain water.

## Silver End Academy Pantry

Now by appointment only

If you would like a pantry bag please let Mrs Gigg know via DOJO, email [adminsil@inspiresmat.co.uk](mailto:adminsil@inspiresmat.co.uk) or via the school Office. We are well stocked at the moment and are able to support with a range of products.

Kind regards Mrs Gigg



## Children's medical appointments

If your child needs to attend a medical/dental appointment during school time.

Please email [adminsil@inspiresmat.co.uk](mailto:adminsil@inspiresmat.co.uk) your proof of medical appointment.



## Celebrating your Child's Birthday



Don't forget to book in for lunch to celebrate your child's birthday!

- One adult can book in to have lunch, on or near, your child's birthday.
- Go to Parentmail and buy an adult lunch, priced at £3.20 you can also have a packed lunch if you wish.
- Email the school office at least a week in advance so we can book you in and we can let our catering team know.
- If you have missed your child's birthday (September – now), please don't worry – find a convenient day and book to have lunch this term or next term.
- When you come to school (12pm), your child will meet you at the office and you'll be taking to the hall to have lunch. Once you've finished eating, you'll be brought back to the school office.





## TESCO STRONGER STARTS COMMUNITY GRANT

**If you shop at Tesco, vote  
for us with your tokens!**

Look out for our school project which aims to ensure children have an opportunity to promote their oracy skills and open ended learning opportunities.

The project with the highest number of votes will receive up to £1,500, second place up to £1,00 and third place up to £500.

You can find votes for our project in 5 Tesco stores:

Braintree Superstore CM7 3HQ

Braintree Great Notley Superstore CM77 7WW

Braintree Marks Farm Superstore CM77 8AA

Braintree Coggeshall Road Express Express CM7 9EL

Halstead Superstore Superstore CO9 2JN

## Head Lice is not nice'



We have had a few reported cases of headlice in school recently.

We kindly ask that you check your child's hair regularly and treat if necessary, to help prevent further spread.



Head lice are a common occurrence in school settings and nothing to be alarmed about. With everyone's support, we can manage this quickly and effectively.

Thank you for your cooperation.

## School Car Park

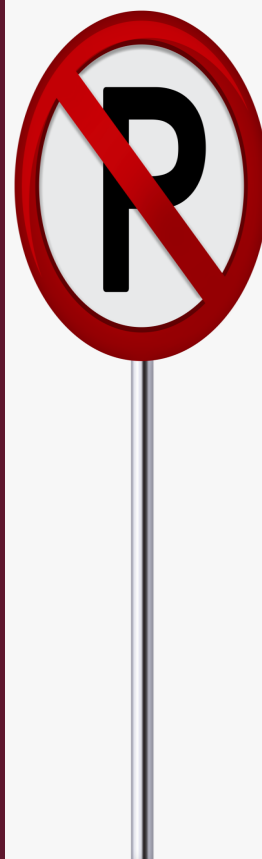
We kindly remind all families that the staff car park is not to be used for drop-off or pick-up at any time, including during Breakfast Club and After School Clubs.

As we have a small car park, it is important that we keep these spaces available for staff and essential deliveries only.

If you have prior agreement from the school office or hold a valid Blue Badge, you may use the designated disabled parking bays.

We appreciate your cooperation in keeping the car park safe and accessible for those who need it.

Thank you for your understanding and support





## Inspires MAT School Term and Holiday Dates Academic Year 2025-2026

September 2025							October 2025							November 2025							December 2025							
M	T	W	T	F	S	S	M	T	W	T	F	S	S	M	T	W	T	F	S	S	M	T	W	T	F	S	S	
									1	2	3	4	5						1	2	1	2	3	4	5	6	7	
1	2	3	4	5	6	7	6	7	8	9	10	11	12	3	4	5	6	7	8	9	8	9	10	11	12	13	14	
8	9	10	11	12	13	14	13	14	15	16	17	18	19	10	11	12	13	14	15	16	15	16	17	18	19	20	21	
15	16	17	18	19	20	21	20	21	22	23	24	25	26	17	18	19	20	21	22	23	22	23	24	25	26	27	28	
22	23	24	25	26	27	28	27	28	29	30	31			24	25	26	27	28	29	30	29	30	31					
29	30																											
January 2026							February 2026							March 2026							April 2026							
M	T	W	T	F	S	S	M	T	W	T	F	S	S	M	T	W	T	F	S	S	M	T	W	T	F	S	S	
			1	2	3	4							1							1			1	2	3	4	5	
5	6	7	8	9	10	11	2	3	4	5	6	7	8	2	3	4	5	6	7	8	6	7	8	9	10	11	12	
12	13	14	15	16	17	18	9	10	11	12	13	14	15	9	10	11	12	13	14	15	13	14	15	16	17	18	19	
19	20	21	22	23	24	25	16	17	18	19	20	21	22	16	17	18	19	20	21	22	20	21	22	23	24	25	26	
26	27	28	29	30	31		23	24	25	26	27	28		23	24	25	26	27	28	29	27	28	29	30				
														30	31													
May 2026							June 2026							July 2026							August 2026							
M	T	W	T	F	S	S	M	T	W	T	F	S	S	M	T	W	T	F	S	S	M	T	W	T	F	S	S	
				1	2	3	1	2	3	4	5	6	7			1	2	3	4	5							1	2
4	5	6	7	8	9	10	8	9	10	11	12	13	14	6	7	8	9	10	11	12	3	4	5	6	7	8	9	
11	12	13	14	15	16	17	15	16	17	18	19	20	21	13	14	15	16	17	18	19	10	11	12	13	14	15	16	
18	19	20	21	22	23	24	22	23	24	25	26	27	28	20	21	22	23	24	25	26	17	18	19	20	21	22	23	
25	26	27	28	29	30	31	29	30						27	28	29	30	31			24	25	26	27	28	29	30	
																					31							

- = Schooldays
- = School holidays
- = Bank holidays
- = Weekends
- = Inset Days (non-pupil)

In addition, schools allocate five non-pupil days out of the school days indicated, or the equivalent in disaggregated twilight sessions.

<b>Autumn Term:</b>	Monday 1 September 2025 – Friday 19 December 2025 <i>Half Term 27 October – 31 October</i>	75 days
<b>Spring Term:</b>	Monday 5 January 2026 – Friday 27 March 2026 <i>Half Term 16 February - 20 February</i>	55 days
<b>Summer Term:</b>	Monday 13 April 2026 – Monday 20 July 2026 <i>Half Term 25 May – 29 May, and May Bank Holiday - 4 May</i>	65 days
		195 days

**Please note:**  
 The above dates may vary for individual schools, especially Foundation, Voluntary Aided schools and Academies.  
 You are strongly advised to check with your child's school before making any holiday or other commitments.



# Inspires MAT School Term and Holiday Dates

## Academic Year 2026-2027

September 2026							October 2026							November 2026							December 2026						
M	T	W	T	F	S	S	M	T	W	T	F	S	S	M	T	W	T	F	S	S	M	T	W	T	F	S	S
										1	2	3	4							1		1	2	3	4	5	6
	1	2	3	4	5	6	5	6	7	8	9	10	11	2	3	4	5	6	7	8	7	8	9	10	11	12	13
7	8	9	10	11	12	13	12	13	14	15	16	17	18	9	10	11	12	13	14	15	14	15	16	17	18	19	20
14	15	16	17	18	19	20	19	20	21	22	23	24	25	16	17	18	19	20	21	22	21	22	23	24	25	26	27
21	22	23	24	25	26	27	26	27	28	29	30	31		23	24	25	26	27	28	29	28	29	30	31			
28	29	30												30													
January 2027							February 2027							March 2027							April 2027						
M	T	W	T	F	S	S	M	T	W	T	F	S	S	M	T	W	T	F	S	S	M	T	W	T	F	S	S
				1	2	3	1	2	3	4	5	6	7	1	2	3	4	5	6	7				1	2	3	4
4	5	6	7	8	9	10	8	9	10	11	12	13	14	8	9	10	11	12	13	14	5	6	7	8	9	10	11
11	12	13	14	15	16	17	15	16	17	18	19	20	21	15	16	17	18	19	20	21	12	13	14	15	16	17	18
18	19	20	21	22	23	24	22	23	25	25	26	27	28	22	23	24	25	26	27	28	19	20	21	22	23	24	25
25	26	27	28	29	30	31								29	30	31					26	27	27	29	30		
May 2027							June 2027							July 2027							August 2027						
M	T	W	T	F	S	S	M	T	W	T	F	S	S	M	T	W	T	F	S	S	M	T	W	T	F	S	S
					1	2		1	2	3	4	5	6				1	2	3	4							1
3	4	5	6	7	8	9	7	8	9	10	11	12	13	5	6	7	8	9	10	11	2	3	4	5	6	7	8
10	11	12	13	14	15	16	14	15	16	17	18	19	20	12	13	14	15	16	17	18	9	10	11	12	13	14	15
17	18	19	20	21	22	23	21	22	23	24	25	26	27	19	20	21	22	23	24	25	16	17	18	19	20	21	22
24	25	26	27	28	29	30	28	29	30					26	27	28	29	30	31	23	24	25	26	27	28	29	
31																					30	31					

= Schooldays

= School holidays

= Bank holidays

= Weekends

In addition, schools allocate five non-pupil days, highlighted yellow, out of the school days indicated, or the equivalent in disaggregated twilight sessions.

<b>Autumn Term:</b>	Tuesday 1 September 2026 – Friday 18 December 2026 <i>Half Term 26 October – 30 October</i>	74 days
<b>Spring Term:</b>	Monday 4 January 2027 – Thursday 25 March 2027 <i>Half Term 15 February - 19 February</i>	54 days
<b>Summer Term:</b>	Monday 12 April 2027 – Wednesday 21 July 2027 <i>Half Term 31 May – 4 June, and May Bank Holiday - 3 May</i>	67 days
		<u>195 days</u>

**Please note:**

The above dates may vary for individual schools, especially Foundation, Voluntary Aided schools and Academies.

You are strongly advised to check with your child's school before making any holiday or other commitments.



# Inspires MAT School Term and Holiday Dates

## Academic Year 2027-2028

September 2027							October 2027							November 2027							December 2027						
M	T	W	T	F	S	S	M	T	W	T	F	S	S	M	T	W	T	F	S	S	M	T	W	T	F	S	S
											1	2	3	1	2	3	4	5	6	7					1	2	3
		1	2	3	4	5	4	5	6	7	8	9	10	8	9	10	11	12	13	14	6	7	8	9	10	11	12
6	7	8	9	10	11	12	11	12	13	14	15	16	17	15	16	17	18	19	20	21	13	14	15	16	17	18	19
13	14	15	16	17	18	19	18	19	20	21	22	23	24	22	23	24	25	26	27	28	20	21	22	23	24	25	26
20	21	22	23	24	25	26	25	26	27	28	29	30	31	29	30						27	28	29	31			
27	28	29	30																								
January 2028							February 2028							March 2028							April 2028						
M	T	W	T	F	S	S	M	T	W	T	F	S	S	M	T	W	T	F	S	S	M	T	W	T	F	S	S
					1	2		1	2	3	4	5	6			1	2	3	4	5						1	2
3	4	5	6	7	8	9	7	8	9	10	11	12	13	6	7	8	9	10	11	12	3	4	5	6	7	8	9
10	11	12	13	14	15	16	14	15	16	17	18	19	20	13	14	15	16	17	18	19	10	11	12	13	14	15	16
17	18	19	20	21	22	23	21	22	23	24	25	26	27	20	21	22	23	24	25	26	17	18	19	20	21	22	23
24	25	26	27	28	29	30	28	29						27	28	29	30	31			24	25	26	27	28	29	30
31																											
May 2028							June 2028							July 2028							August 2028						
M	T	W	T	F	S	S	M	T	W	T	F	S	S	M	T	W	T	F	S	S	M	T	W	T	F	S	S
1	2	3	4	5	6	7				1	2	3	4						1	2							
8	9	10	11	12	13	14	5	6	7	8	9	10	11	3	4	5	6	7	8	9		1	2	3	4	5	6
15	16	17	18	19	20	21	12	13	14	15	16	17	18	10	11	12	13	14	15	16	7	8	9	10	11	12	13
22	23	24	25	26	27	28	19	20	21	22	23	24	25	17	18	19	20	21	22	23	14	15	16	17	18	19	20
29	30	31					26	27	28	29	30			24	25	26	27	28	29	30	21	22	23	24	25	26	27
														31							28	29	30	31			

- = Schooldays
- = School holidays
- = Bank holidays
- = Weekends

In addition, schools allocate five non-pupil days, highlighted yellow, out of the school days indicated, or the equivalent in disaggregated twilight sessions.

<b>Autumn Term:</b>	Wednesday 1 September 2027 – Friday 17 December 2027 <i>Half Term 25 October – 29 October</i>	73 days
<b>Spring Term:</b>	Tuesday 4 January 2028 – Friday 31 March 2028 <i>Half Term 14 February - 18 February</i>	59 days
<b>Summer Term:</b>	Tuesday 18 April 2028 – Friday 21 July 2028 <i>Half Term 29 May – 2 June, and May Bank Holiday - 1 May</i>	63 days
		<u>195 days</u>

**Please note:**

The above dates may vary for individual schools, especially Foundation, Voluntary Aided schools and Academies.

You are strongly advised to check with your child's school before making any holiday or other commitments.

# Menu for week commencing 27.04.2026 Week 2

## Silver End Academy

**Monday**

**Pasta with a choice of Sauces**  
served with crispy salad

**Jacket Potato**  
served with a choice of toppings

**Tuesday**

**Katsu Chicken**  
served with coconut rice  
and kachumber salad

**Vegetarian Sausage Rolls**  
served with diced potatoes and  
baked beans

**Jacket Potato**  
Served with a choice of toppings

**Wednesday**

**Sausage with Pasta in  
Tomato Sauce**  
served with mixed salad

**Veggie Power Balls in  
Tomato Sauce**  
served with pasta and mixed salad

**Jacket Potato**  
Served with a choice of toppings

**Thursday**

**NEW Salt & Pepper  
Chicken**  
served with noodles

**Quorn Mexican Burrito**  
served with corn on the cob

**Jacket Potato**  
Served with a choice of toppings

**Friday**

**Breaded Fish Fillet**  
served with crispy chips and peas

**Cheesy Frittata**  
served with crispy chips and  
baby peas

**Sweet Treat Friday**  
Kitchens Choice

**Jacket Potato**  
Served with a choice of toppings

Available Everyday  
[A healthy salad bar, fresh fruit and yoghurt, Bread, milk,  
Lactose reduced milk and water]

Week 2



**Fresh**  
All our food is cooked  
fresh each day

**Healthy**  
Our pasta, rice and  
breads are healthy  
wholemeal products

**Checked**  
We always use  
reputable suppliers  
and where possible  
use local produce



# Menu

# Menu for week commencing 05.05.2026 Week 3

## Silver End Academy

### Monday

#### Cheese & Tomato Pizza Day

served with mixed leaves and five bean salad

### Tuesday

#### Southern Fried Chicken Goujon Wrap

served with sweet crunchy coleslaw

### Wednesday

#### Roast Chicken

served with crispy roast potatoes, carrots, green beans and gravy

### Thursday

#### Pasta with Peas and Bacon

served with mixed salad

### Friday

#### Fish Fingers

served with crispy chips, baked beans or baby peas

#### Sweet Treat Friday

Kitchens Choice

Available Everyday

[A healthy salad bar, fresh fruit and yoghurt, Bread, milk, Lactose reduced milk and water]

Week 3



Fresh  
All our food is cooked  
fresh each day

Healthy  
Our pasta, rice and  
breads are healthy  
wholemeal products

checked  
We always use  
reputable suppliers  
and where possible  
use local produce



# Menu