

## SCHOOL TERM DATES

25/26

- Monday 30th March -Easter Holidays
- Monday 13th April—Return to School
- Monday 25th May—Half Term
- Monday 1st June—Non-pupil Day
- Tuesday 2nd June—Return to School
- Monday 20th July Non-Pupil Day
- Tuesday 21st July—Start of school holidays 2026



SILVER  
END

ACADEMY

GROW SHINE SUCCEED

14/04/2026

## A Message from Headteacher

Dear Parents and Carers,

I hope you all had a lovely **Easter holiday** and were able to make the most of the longer days and some welcome sunshine. It has been wonderful to see the children return to school so positively, and we have already made a great start to the **summer term**. We are looking forward to the many activities planned over the coming weeks and to making the most of more opportunities to learn and spend time outdoors.

At the end of last term, we held a very successful **Parent Art Afternoon**, and I would like to thank everyone who was able to attend and support this event. It was fantastic to see the school filled with creativity and collaboration. We hope many of you will also be able to join us for our **Art Exhibition this Friday**. This was a huge success last year and I am sure it will be just as enjoyable and well attended this time.

Continuing with our art theme, we began this week with an assembly focused on **World Art Day**, celebrating creativity in all its forms. We were also delighted to receive some fantastic entries for our **art competition** that ran over the Easter holidays — the effort and imagination shown have been truly impressive.

This week, we are focusing on our core value of **perseverance**, and we are looking forward to seeing all the different ways children — and adults — demonstrate this both in school and at home. Whether it is tackling a challenging piece of learning or continuing to practise a new skill, perseverance is such an important quality for success.

Another of our **School Improvement Plan priorities** is to ensure that the school has a clear strategic direction for improvement, underpinned by a shared vision and values. I hope you have been able to see the renewed focus on our school values and the important role they play in daily school life. The children have developed a strong understanding of these values, and they are celebrated each week in class through our **'Student of the Week'** awards, recognising those who have demonstrated the focus value particularly well.

Thank you, as always, for your continued support. We look forward to another busy and successful term ahead.

Warm regards,

Mrs Meares



## Dates for your Calendar

Friday 17th April– Art Gallery day (please note that the only lunch option is picnic lunch on that day)

Friday 17th April– Silver End 100th Year celebration Procession.  
Meet at Silver End Academy for 6pm

Friday 24th April– Coffee morning Mental Health support team  
autism workshop 8.45am– 10.30am

Wednesday 29th April– EYFS parents only– Road Safety session at  
9am

Thursday 7th May– Sponsored Walk/Run after school

Wednesday 3rd June – Friday 5th June– Year 6 Residential

Tuesday 9th June – Year 4—WiseUp Team building in school

Tuesday 16th June- Year 2 Mountfitchet Castle Trip

Wednesday 1st July– Sports Day KS1 Morning and KS2 Afternoon  
(Parents are invited for a picnic Lunch)

Monday 6th July- Year 1 Boydells Farm Trip

Wednesday 8th July - Saffron Music Live Tiny Magic Orchestra  
at Silver End Academy EYFS, Year 1 and Year 2.

Thursday 9th July– Reserve Sports day

## **Bob and Mary School Crossing Patrol**

We were privileged to welcome Bob and Mary to school before the Easter holiday to thank them for the time and commitment they have given to us all as our school crossing patrol.

Due to the incredible generosity of parents, we were able to present Bob and Mary with a Tiptree Tearoom gift voucher, restaurant voucher, chocolates, flowers, a bottle of fizz, a lovely framed photograph of them and some mini school crossing patrol figurines.

Bob and Mary shared tea and cake with our School Council and were so grateful for the presents and the kindness shown to them.



SILVER END ACADEMY'S

# SPONSORED WALK/RUN

Join us for:  
Cake stall  
Bottle stall  
Other activities

**Medals for all  
participants.**

**7 MAY, 2026**

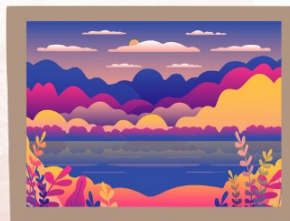
EYFS/KS1 - **1 to 5 laps** - 3.15pm  
KS2 - 5 - **10 laps** - 3.30pm



SILVER  
END  
ACADEMY

**ALL MONEY RAISED  
WILL GO TO  
SCHOOLS FUNDING  
FOR OUTDOOR  
LEARNING AND  
OTHER PROJECTS.**

# OPEN GALLERY ART DAY



Date: 17th April 2026

Location: School Hall

Parents are warmly invited to our Open Gallery Art Day to celebrate the amazing creativity of our students!

Year group slots: Please check the timetable for your child's allocated time.

<b>8:45 - 9:15</b>	<b>EYFS</b>
<b>9:25 - 9:55</b>	<b>Year 1</b>
<b>10:05 - 10:35</b>	<b>Year 2</b>
<b>11:00 - 11:30</b>	<b>Year 3</b>
<b>1:05 - 1:35</b>	<b>Year 4</b>
<b>1:45 - 2:15</b>	<b>Year 5</b>
<b>2:25 - 2:55</b>	<b>Year 6</b>

After school access: The hall will remain open for those unable to attend during the day.



**SILVER  
END**  
ACADEMY

We look forward to seeing you and sharing our wonderful artwork!

## Current Class Attendance %

Olympus - 94.92%

Rushmore—94.30%

Table- 94.45%

Ben Nevis- 94.09%

Fuji- 93.77%

Kilimanjaro- 95.90%

Suilven- 92.92%

Mount Cook- 96.34%

Mont Blanc- 95.55%

Mount Etna- 97.49%

Snowdon- 94.75%

Aconcagua— 94.19%

Everest- 94.9%

K2- 96.40%





# FIRE WALK

## FUNDRAISING EVENT

20th June 2026 | 7pm | Western  
Arms, Silver End

Supporting local charities and community  
groups

The event is being organised by Boars Tye House in aid of Local charities including Little Wings of Hope, Silver End Academy Pta & Friends of Chatten Free School.

Donations received will be shared equally between the organisations

Scan me to  
sign up



Scan me to  
donate



For more information  
on taking  
part please contact  
Ryan at Boars Tye House  
Ryan@boarstye.co.uk



little wings of hope

Silver End Academy PTA Registered Charity  
in England and Wales: 1216610.

Little Wings of Hope Registered Charity  
in England and Wales: 1213009.



## Water Bottles

Please make sure your child has a named water bottle in school and you follow the school policy that bottles should only contain water.

## **Does your child have a mobile phone or are you thinking of getting them one?**

There are some really useful top tips and advice on the NSPCC website:

[www.nspcc.org.uk/keeping-children-safe/online-safety/children-phones-online-safety/](http://www.nspcc.org.uk/keeping-children-safe/online-safety/children-phones-online-safety/)

## **Questions and answers about children and phones**

### **How do phones impact my child's wellbeing?**

Phones can be helpful for communication and learning, but they can also affect wellbeing if not managed carefully.

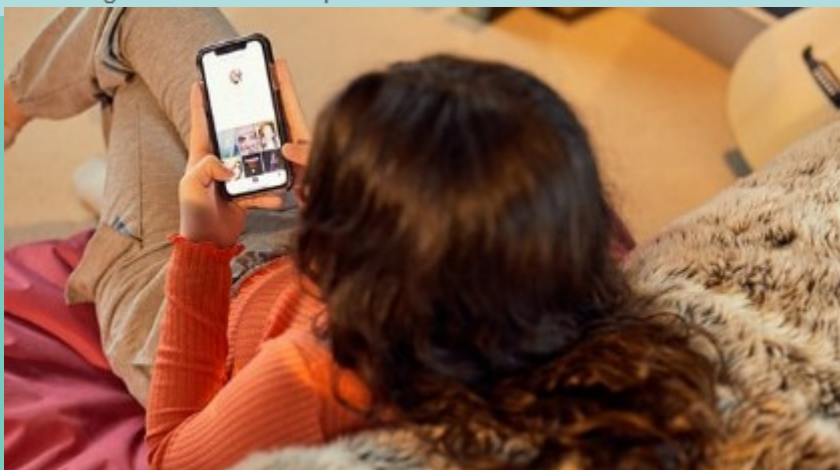
Risks include disrupted sleep, reduced attention span, and increased anxiety from social media pressures. Setting boundaries and encouraging offline activities helps maintain balance.

### **I don't want my child to have a phone until they are older. How do I go about doing that?**

It's important to explain your reasons clearly and consistently. Focus on the benefits of waiting, such as more time for play and face-to-face interaction. Offer alternatives like family messaging apps on shared devices or basic feature phones without internet access for emergencies.

### **My child could benefit from a phone for travelling to school but I'm worried about the risks. What do I do?**

Consider a phone with limited features, such as calls and texts only, or use parental controls to restrict apps and screen time. Talk to your child about safe use, including not sharing personal details and reporting any unwanted contact. Regular check-ins and agreed rules can help reduce risks.



# Your Speak out. Stay safe. certificate

**Awarded to:**


Silver End Academy

A massive thank you and a big well done to all pupils for being such great listeners and taking part in *Speak out*.  
Stay safe. with Buddy.



**Chris Sherwood**  
Chief Executive

Date: March 2026



Thank you for  
helping to keep  
more children safe!

# NSPCC

EVERY CHILDHOOD IS WORTH FIGHTING FOR

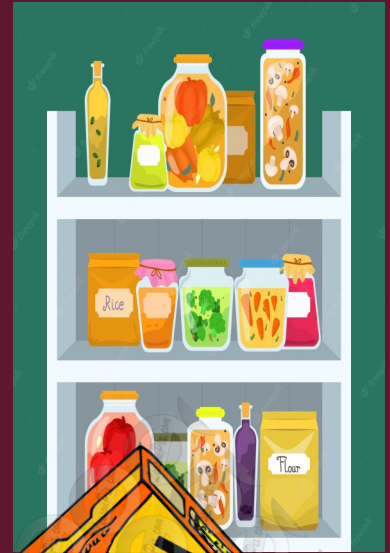
© NSPCC 2024. Registered charity England and Wales 215401, Scotland SC037737 and Jersey 384. Illustrations by Jamie Nash. J02403111.

## Silver End Academy Pantry

Now by appointment only

If you would like a pantry bag please let Mrs Gigg know via DOJO, email [ad-  
minsil@inspiresmat.co.uk](mailto:ad-<br/>minsil@inspiresmat.co.uk) or via the school Office. We are well stocked at the moment and are able to support with a range of products.

Kind regards Mrs Gigg



## Children's medical appointments

If your child needs to attend a medical/dental appointment during school time.

Please email [ad-  
minsil@inspiresmat.co.uk](mailto:ad-<br/>minsil@inspiresmat.co.uk) your proof of medical appointment.



## Celebrating your Child's Birthday



Don't forget to book in for lunch to celebrate your child's birthday!

- One adult can book in to have lunch, on or near, your child's birthday.
- Go to Parentmail and buy an adult lunch, priced at £3.20 you can also have a packed lunch if you wish.
- Email the school office at least a week in advance so we can book you in and we can let our catering team know.
- If you have missed your child's birthday (September – now), please don't worry – find a convenient day and book to have lunch this term or next term.
- When you come to school (12pm), your child will meet you at the office and you'll be taking to the hall to have lunch. Once you've finished eating, you'll be brought back to the school office.





## TESCO STRONGER STARTS COMMUNITY GRANT

**If you shop at Tesco, vote  
for us with your tokens!**

Look out for our school project which aims to ensure children have an opportunity to promote their oracy skills and open ended learning opportunities.

The project with the highest number of votes will receive up to £1,500, second place up to £1,00 and third place up to £500.

You can find votes for our project in 5 Tesco stores:

Braintree Superstore CM7 3HQ

Braintree Great Notley Superstore CM77 7WW

Braintree Marks Farm Superstore CM77 8AA

Braintree Coggeshall Road Express Express CM7 9EL

Halstead Superstore Superstore CO9 2JN



## Parking Reminder

Please be careful when parking your car at school drop off and pick up. We have been made aware that cars are blocking

residents driveways. Please be considerate when parking .

If you see an incident please report it to: <https://north.parkingpartnership.org/enforcement-requests/>



## Police dogs—our school premises

**As part of our ongoing commitment to support our community, we are proud to let parents know that our local police dog handlers will be using the school premises (out of hours) to train their dogs. This will provide an extra level of security to the school which is good.**



# School Crossing Patrol Officer Vacancy

Are you looking for an opportunity to support your local community?

Come and join Essex County Council's School Crossing Patrol Team,  
We currently have a vacancy serving:

## Silver End Academy

**£13.00 per hour**  
**Term Time Only - Part Time Hours**

To apply visit [www.workingforessex.com](http://www.workingforessex.com), or call the Resourcing  
Team on **0333 013 5888**.



**INSPIRED TO DO MORE**



# School Crossing Patrol (SCP) Vacancies

**Are you looking for  
an opportunity to support  
your community?**

There are around 160 School Crossing Patrol sites across the county of Essex. Sometimes known as Lollipop People, SCP Officers work on school days for approximately 40 minutes each morning and afternoon. Hourly rate from £13.00 ph.



Positions available across Essex, including:

Scan this QR code for a  
direct link to the role:



Or for more information and to apply please visit:

[www.workingforessex.com](http://www.workingforessex.com)

Email – [resourcing.team@essex.gov.uk](mailto:resourcing.team@essex.gov.uk)



Essex County Council

## 'Head Lice is not nice'



We have had a few reported cases of headlice in school recently.

We kindly ask that you check your child's hair regularly and treat if necessary, to help prevent further spread.

Head lice are a common occurrence in school settings and nothing to be alarmed about. With everyone's support, we can manage this quickly and effectively.



Thank you for your cooperation.

## School Car Park

We kindly remind all families that the staff car park is not to be used for drop-off or pick-up at any time, including during Breakfast Club and After School Clubs.

As we have a small car park, it is important that we keep these spaces available for staff and essential deliveries only.

If you have prior agreement from the school office or hold a valid Blue Badge, you may use the designated disabled parking bays.

We appreciate your cooperation in keeping the car park safe and accessible for those who need it.

Thank you for your understanding and support

Mrs Meares – Headteacher





## Inspires MAT School Term and Holiday Dates Academic Year 2025-2026

September 2025							October 2025							November 2025							December 2025						
M	T	W	T	F	S	S	M	T	W	T	F	S	S	M	T	W	T	F	S	S	M	T	W	T	F	S	S
									1	2	3	4	5						1	2	1	2	3	4	5	6	7
1	2	3	4	5	6	7	6	7	8	9	10	11	12	3	4	5	6	7	8	9	8	9	10	11	12	13	14
8	9	10	11	12	13	14	13	14	15	16	17	18	19	10	11	12	13	14	15	16	15	16	17	18	19	20	21
15	16	17	18	19	20	21	20	21	22	23	24	25	26	17	18	19	20	21	22	23	22	23	24	25	26	27	28
22	23	24	25	26	27	28	27	28	29	30	31			24	25	26	27	28	29	30	29	30	31				
29	30																										
January 2026							February 2026							March 2026							April 2026						
M	T	W	T	F	S	S	M	T	W	T	F	S	S	M	T	W	T	F	S	S	M	T	W	T	F	S	S
			1	2	3	4							1							1			1	2	3	4	5
5	6	7	8	9	10	11	2	3	4	5	6	7	8	2	3	4	5	6	7	8	6	7	8	9	10	11	12
12	13	14	15	16	17	18	9	10	11	12	13	14	15	9	10	11	12	13	14	15	13	14	15	16	17	18	19
19	20	21	22	23	24	25	16	17	18	19	20	21	22	16	17	18	19	20	21	22	20	21	22	23	24	25	26
26	27	28	29	30	31		23	24	25	26	27	28		23	24	25	26	27	28	29	27	28	29	30			
														30	31												
May 2026							June 2026							July 2026							August 2026						
M	T	W	T	F	S	S	M	T	W	T	F	S	S	M	T	W	T	F	S	S	M	T	W	T	F	S	S
				1	2	3	1	2	3	4	5	6	7			1	2	3	4	5						1	2
4	5	6	7	8	9	10	8	9	10	11	12	13	14	6	7	8	9	10	11	12	3	4	5	6	7	8	9
11	12	13	14	15	16	17	15	16	17	18	19	20	21	13	14	15	16	17	18	19	10	11	12	13	14	15	16
18	19	20	21	22	23	24	22	23	24	25	26	27	28	20	21	22	23	24	25	26	17	18	19	20	21	22	23
25	26	27	28	29	30	31	29	30						27	28	29	30	31			24	25	26	27	28	29	30
																					31						

- = Schooldays
- = School holidays
- = Bank holidays
- = Weekends
- = Inset Days (non-pupil)

In addition, schools allocate five non-pupil days out of the school days indicated, or the equivalent in disaggregated twilight sessions.

<b>Autumn Term:</b>	Monday 1 September 2025 – Friday 19 December 2025 <i>Half Term 27 October – 31 October</i>	75 days
<b>Spring Term:</b>	Monday 5 January 2026 – Friday 27 March 2026 <i>Half Term 16 February - 20 February</i>	55 days
<b>Summer Term:</b>	Monday 13 April 2026 – Monday 20 July 2026 <i>Half Term 25 May – 29 May, and May Bank Holiday - 4 May</i>	65 days
		195 days

**Please note:**

The above dates may vary for individual schools, especially Foundation, Voluntary Aided schools and Academies.

You are strongly advised to check with your child's school before making any holiday or other commitments.



# Inspires MAT School Term and Holiday Dates

## Academic Year 2026-2027

September 2026							October 2026							November 2026							December 2026						
M	T	W	T	F	S	S	M	T	W	T	F	S	S	M	T	W	T	F	S	S	M	T	W	T	F	S	S
										1	2	3	4							1		1	2	3	4	5	6
	1	2	3	4	5	6	5	6	7	8	9	10	11	2	3	4	5	6	7	8	7	8	9	10	11	12	13
7	8	9	10	11	12	13	12	13	14	15	16	17	18	9	10	11	12	13	14	15	14	15	16	17	18	19	20
14	15	16	17	18	19	20	19	20	21	22	23	24	25	16	17	18	19	20	21	22	21	22	23	24	25	26	27
21	22	23	24	25	26	27	26	27	28	29	30	31		23	24	25	26	27	28	29	28	29	30	31			
28	29	30												30													
January 2027							February 2027							March 2027							April 2027						
M	T	W	T	F	S	S	M	T	W	T	F	S	S	M	T	W	T	F	S	S	M	T	W	T	F	S	S
				1	2	3	1	2	3	4	5	6	7	1	2	3	4	5	6	7				1	2	3	4
4	5	6	7	8	9	10	8	9	10	11	12	13	14	8	9	10	11	12	13	14	5	6	7	8	9	10	11
11	12	13	14	15	16	17	15	16	17	18	19	20	21	15	16	17	18	19	20	21	12	13	14	15	16	17	18
18	19	20	21	22	23	24	22	23	24	25	26	27	28	22	23	24	25	26	27	28	19	20	21	22	23	24	25
25	26	27	28	29	30	31								29	30	31					26	27	27	29	30		
May 2027							June 2027							July 2027							August 2027						
M	T	W	T	F	S	S	M	T	W	T	F	S	S	M	T	W	T	F	S	S	M	T	W	T	F	S	S
					1	2		1	2	3	4	5	6				1	2	3	4							1
3	4	5	6	7	8	9	7	8	9	10	11	12	13	5	6	7	8	9	10	11	2	3	4	5	6	7	8
10	11	12	13	14	15	16	14	15	16	17	18	19	20	12	13	14	15	16	17	18	9	10	11	12	13	14	15
17	18	19	20	21	22	23	21	22	23	24	25	26	27	19	20	21	22	23	24	25	16	17	18	19	20	21	22
24	25	26	27	28	29	30	28	29	30					26	27	28	29	30	31	23	24	25	26	27	28	29	
31																					30	31					

= Schooldays

= School holidays

= Bank holidays

= Weekends

In addition, schools allocate five non-pupil days, highlighted yellow, out of the school days indicated, or the equivalent in disaggregated twilight sessions.

<b>Autumn Term:</b>	Tuesday 1 September 2026 – Friday 18 December 2026 <i>Half Term 26 October – 30 October</i>	74 days
<b>Spring Term:</b>	Monday 4 January 2027 – Thursday 25 March 2027 <i>Half Term 15 February - 19 February</i>	54 days
<b>Summer Term:</b>	Monday 12 April 2027 – Wednesday 21 July 2027 <i>Half Term 31 May – 4 June, and May Bank Holiday - 3 May</i>	67 days
		<u>195 days</u>

**Please note:**

The above dates may vary for individual schools, especially Foundation, Voluntary Aided schools and Academies.

You are strongly advised to check with your child's school before making any holiday or other commitments.



# Inspires MAT School Term and Holiday Dates

## Academic Year 2027-2028

September 2027							October 2027							November 2027							December 2027						
M	T	W	T	F	S	S	M	T	W	T	F	S	S	M	T	W	T	F	S	S	M	T	W	T	F	S	S
											1	2	3	1	2	3	4	5	6	7			1	2	3	4	5
		1	2	3	4	5	4	5	6	7	8	9	10	8	9	10	11	12	13	14	6	7	8	9	10	11	12
6	7	8	9	10	11	12	11	12	13	14	15	16	17	15	16	17	18	19	20	21	13	14	15	16	17	18	19
13	14	15	16	17	18	19	18	19	20	21	22	23	24	22	23	24	25	26	27	28	20	21	22	23	24	25	26
20	21	22	23	24	25	26	25	26	27	28	29	30	31	29	30						27	28	29	31	31		
27	28	29	30																								

January 2028							February 2028							March 2028							April 2028						
M	T	W	T	F	S	S	M	T	W	T	F	S	S	M	T	W	T	F	S	S	M	T	W	T	F	S	S
					1	2		1	2	3	4	5	6			1	2	3	4	5						1	2
3	4	5	6	7	8	9	7	8	9	10	11	12	13	6	7	8	9	10	11	12	3	4	5	6	7	8	9
10	11	12	13	14	15	16	14	15	16	17	18	19	20	13	14	15	16	17	18	19	10	11	12	13	14	15	16
17	18	19	20	21	22	23	21	22	23	24	25	26	27	20	21	22	23	24	25	26	17	18	19	20	21	22	23
24	25	26	27	28	29	30	28	29						27	28	29	30	31			24	25	26	27	28	29	30
31																											

May 2028							June 2028							July 2028							August 2028						
M	T	W	T	F	S	S	M	T	W	T	F	S	S	M	T	W	T	F	S	S	M	T	W	T	F	S	S
1	2	3	4	5	6	7				1	2	3	4						1	2							
8	9	10	11	12	13	14	5	6	7	8	9	10	11	3	4	5	6	7	8	9		1	2	3	4	5	6
15	16	17	18	19	20	21	12	13	14	15	16	17	18	10	11	12	13	14	15	16	7	8	9	10	11	12	13
22	23	24	25	26	27	28	19	20	21	22	23	24	25	17	18	19	20	21	22	23	14	15	16	17	18	19	20
29	30	31					26	27	28	29	30			24	25	26	27	28	29	30	21	22	23	24	25	26	27
														31							28	29	30	31			

- = Schooldays
- = School holidays
- = Bank holidays
- = Weekends

In addition, schools allocate five non-pupil days, highlighted yellow, out of the school days indicated, or the equivalent in disaggregated twilight sessions.

<b>Autumn Term:</b>	Wednesday 1 September 2027 – Friday 17 December 2027 <i>Half Term 25 October – 29 October</i>	73 days
<b>Spring Term:</b>	Tuesday 4 January 2028 – Friday 31 March 2028 <i>Half Term 14 February - 18 February</i>	59 days
<b>Summer Term:</b>	Tuesday 18 April 2028 – Friday 21 July 2028 <i>Half Term 29 May – 2 June, and May Bank Holiday - 1 May</i>	63 days
		<u>195 days</u>

**Please note:**

The above dates may vary for individual schools, especially Foundation, Voluntary Aided schools and Academies.

You are strongly advised to check with your child's school before making any holiday or other commitments.

# Menu for week commencing 13.04.2026 Week 3

## Silver End Academy

Week 3

### Monday

**Pizza Day**  
**Pepperoni**  
served with mixed leaves and five bean salad

### Tuesday

**Sausage and Mashed Potato**  
Served with baked beans or peas (gravy available)

### Wednesday

**Sticky Chicken**  
served with wholemeal rice and corn on the cob

### Thursday

**Brunch Lunch**  
Sausage, bacon, egg, hash brown and baked beans

### Friday

**Jumbo Fishfinger**  
served with crispy chips and peas

**Sweet Treat Friday**  
Kitchens choice

**Pizza Day**  
**Cheese & Tomato**  
served with salad

**Jacket Potato with a choice of toppings**

**Quorn Sausage and Mashed Potato** served with baked beans or peas (gravy available)

**Jacket Potato with a choice of toppings**

**Cheese & Tomato Whirl**  
served with wholemeal rice and corn on the cob

**Jacket Potato with a choice of toppings**

**Veg Brunch Lunch**  
Quorn Sausage, egg, hash brown and baked beans

**Jacket Potato with a choice of toppings**

**Southern veggie burger/no bun**  
served with crispy chips and peas

**Jacket Potato with a choice of toppings**



**Fresh**  
All our food is cooked fresh each day

**Healthy**  
Our pasta, rice and breads are healthy wholemeal products

**checked**  
We always use reputable suppliers and where possible use local produce



Available everyday  
A vibrant salad bar, fresh fruit and yoghurt, bread, milk, lactose reduced milk and water

Activate Windows

Go to Settings to activate Windows.

# Menu