

SCHOOL TERM DATES

25/26

- Monday 30th March -Easter Holidays
- Monday 13th April—Return to School
- Monday 25th May—Half Term
- Monday 1st June—Non-pupil Day
- Tuesday 2nd June—Return to School
- Monday 20th July Non-Pupil Day
- Tuesday 21st July—Start of school holidays 2026



SILVER
END
ACADEMY

GROW SHINE SUCCEED

16/03/2026

A Message from Headteacher

Dear Parents and Carers,

Last week in assembly, Mrs Slodzik launched British Science Week in a very memorable way by creating some toothpaste for an elephant! Using our core value of curiosity, she explored a rather interesting question: *how on earth do elephants clean their enormous teeth?* It was a fantastic way to spark curiosity across the school and set the tone for the week ahead. The excitement continued in classrooms, where each class took part in practical science experiments and investigations. It was wonderful to see the children asking questions, making predictions and exploring scientific ideas through hands-on learning.

This week, we are focusing on the value of self-worth, including thinking about how we can support our own self-esteem and encourage one another to feel confident and valued. Our week began with a fantastic assembly performance from the children who have been learning the guitar. They showed huge courage in performing in front of the whole school and it was incredibly impressive to see how far they have come. We were all very proud of them.

Since the last newsletter, we have also gathered together the ideas from children and staff about our learning behaviours and have now agreed four key expectations for everyone in our school: Ready to Learn, Try Your Best, Show Respect and Take Responsibility. These have been shared with all classes and staff and are already being referred to in lessons across the school to help create the best possible learning environment.

I also wanted to share another of our School Development Plan priorities, which focuses on our Early Years Foundation Stage classes, Rushmore and Olympus. In January, we introduced a new curriculum and we are now working hard to embed it across both classes. As part of this work, we plan to purchase some additional furniture to further enhance the children's continuous provision, creating even more opportunities for purposeful play and learning. Alongside this, we continue to focus on building strong foundations for our youngest learners, particularly in phonics, handwriting, early number and oracy, ensuring they are well prepared for their move into Year 1.

We have also been very lucky to welcome visitors from Felsted School on two occasions since the last newsletter. Our Year 4 pupils enjoyed a brilliant tag rugby session led by Felsted's PE teachers, giving them the chance to develop their teamwork and sporting skills. Then on Friday, our Year 6 pupils took part in an African drumming workshop. I was so impressed with the enthusiasm and confidence they showed — everyone joined in and together they created some truly amazing music.

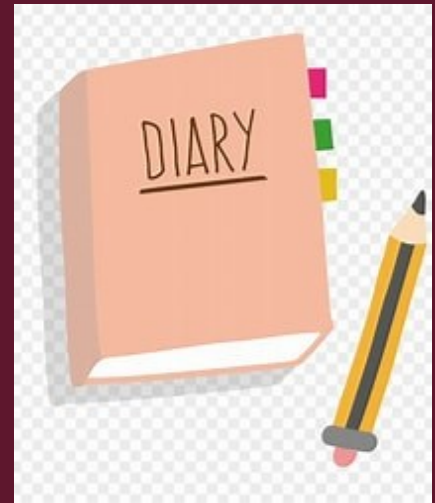
Although it has been a short half term, it has certainly been a very busy one. The children have also taken part in their termly assessments, and we have been incredibly proud of the resilience and determination they have shown.

We are now looking forward to our upcoming Art Afternoon, which will be another wonderful opportunity for parents to join us in school. Following the huge success of our Winter Craft Afternoon, I am sure this event will be just as enjoyable and well attended.

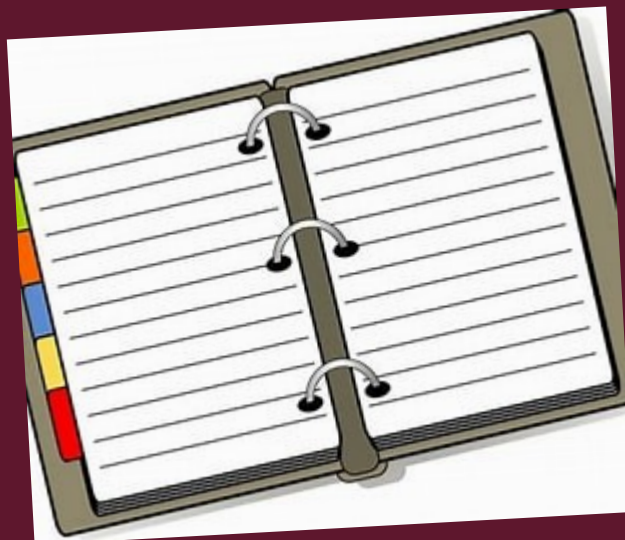
Thank you, as always, for your continued support.

Warm regards,
Mrs Meares

Dates for your diary



- **Monday 16th March—Guitar concert 2pm**
- **Tuesday 17th March – One Planning meetings (by invite only– contacted nearer the time for appointment)**
- **Friday 20th March—Spring Art afternoon for parents—save the date!**
- **Tuesday 24th March – EYFS Ark farm Visit**
- **Wednesday 25th March—Wear green for Cerebral Palsy Day**
- **Wednesday 25th March—PTA Easter event**
- **Thursday 7 May—sponsored run (see newsletter for more details)**



Current Class Attendance

Olympus - 95.01 %

Rushmore - 94.45 %

Table- 94.31 %

Ben Nevis- 93.85 %

Fuji- 93.82 %

Kilimanjaro- 95.95 %

Suilven- 92.56 %

Mount Cook- 96.37 %

Mont Blanc- 95.58 %

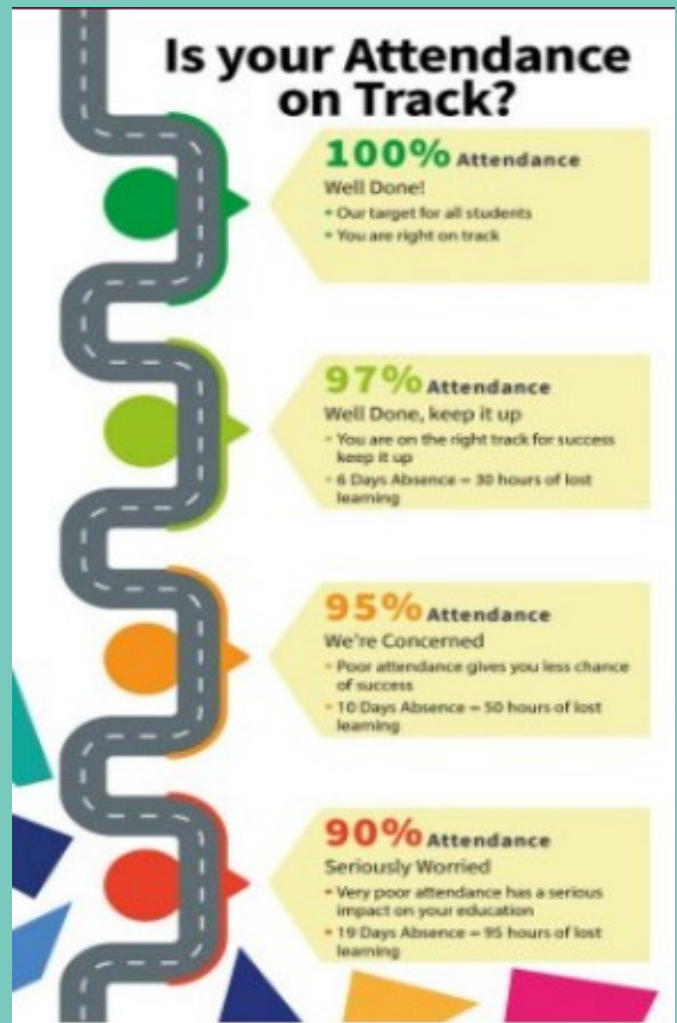
Mount Etna- 97.42 %

Snowdon- 94.75 %

Aconcagua— 94.46 %

Everest- 94.29 %

K2- 96.44 %



JOIN OUR



EASTER TREASURE HUNT

WEDNESDAY 25TH MARCH

STRAIGHT AFTER SCHOOL

ALL PAYING CHILDREN WILL RECEIVE A PRIZE!

*The Year 6s will also be holding
their annual bake sale to raise
money for their celebration.*

*Please come along and support
them!*



Find us on Facebook

@silverendacademypta

PTA NEWSLETTER

Find us on Facebook ~ @silverendacademypta

EASTER **TREASURE HUNT**

Join us on Wednesday
25th March in the school
hall, straight after school

All paying children will
receive a prize!

We can't wait to see you
there for some Easter fun!



CONTACT US

Find us on Facebook
@Silverendacademypta
www.facebook.com/silverendacademypta
PTA Email
silverendpta@gmail.com

**FOLLOW OUR
FACEBOOK PAGE
TO STAY UPDATED
WITH EVERYTHING
WE'RE DOING.**



**OUR PTA IS NOW
A REGISTERED
CHARITY** 🎉

YEAR 6 CAKE SALE

As part of our Easter Treasure Hunt event, the Year 6 pupils will also be holding their annual bake sale to raise money for their end-of-year celebration. They have been busy planning and preparing, and would really appreciate your support. Please do stop by to enjoy a sweet treat while helping them raise funds for this special celebration.

IMPORTANT DATES

- **WEDNESDAY
25TH MARCH**
EASTER TREASURE
HUNT
- **WEDNESDAY
25TH MARCH**
YEAR 6 CAKE SALE
- **THURSDAY 16TH
JULY**
YEAR 6 END OF
YEAR CELEBRATION

SILVER END ACADEMY'S

SPONSORED WALK/RUN

Join us for:
Cake stall
Bottle stall
Other activities

**Medals for all
participants.**

7 MAY, 2026

EYFS/KS1 - **1 to 5 laps** - 3.15pm

KS2 - 5 - **10 laps** - 3.30pm



SILVER
END
ACADEMY

**ALL MONEY RAISED
WILL GO TO
SCHOOLS FUNDING
FOR OUTDOOR
LEARNING AND
OTHER PROJECTS.**



Celebrating your Child's Birthday

Don't forget to book in for lunch to celebrate your child's birthday!

- **One adult can book in to have lunch, on or near, your child's birthday.**
- **Go to Parentmail and buy an adult lunch, priced at £3.20 you can also have a packed lunch if you wish.**
- **Email the school office at least a week in advance so we can book you in and we can let our catering team know.**
- **If you have missed your child's birthday (September - now), please don't worry - find a convenient day and book to have lunch this term or next term.**
- **When you come to school (12pm), your child will meet you at the office and you'll be taken to the hall to have lunch. Once you've finished eating, you'll be brought back to the**





Water Bottles

Please make sure your child has a named water bottle in school and you follow the school policy that bottles should only contain water.

Does your child have a mobile phone or are you thinking of getting them one?

There are some really useful top tips and advice on the NSPCC website:

www.nspcc.org.uk/keeping-children-safe/online-safety/children-phones-online-safety/

Questions and answers about children and phones

How do phones impact my child's wellbeing?

Phones can be helpful for communication and learning, but they can also affect wellbeing if not managed carefully.

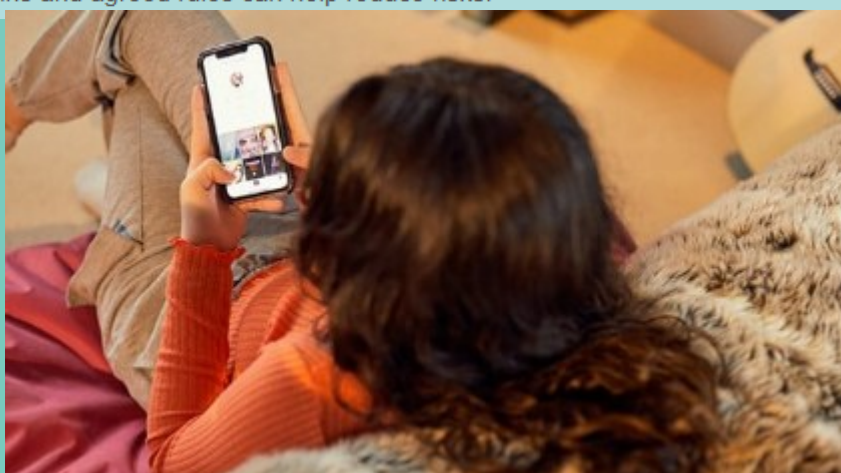
Risks include disrupted sleep, reduced attention span, and increased anxiety from social media pressures. Setting boundaries and encouraging offline activities helps maintain balance.

I don't want my child to have a phone until they are older. How do I go about doing that?

It's important to explain your reasons clearly and consistently. Focus on the benefits of waiting, such as more time for play and face-to-face interaction. Offer alternatives like family messaging apps on shared devices or basic feature phones without internet access for emergencies.

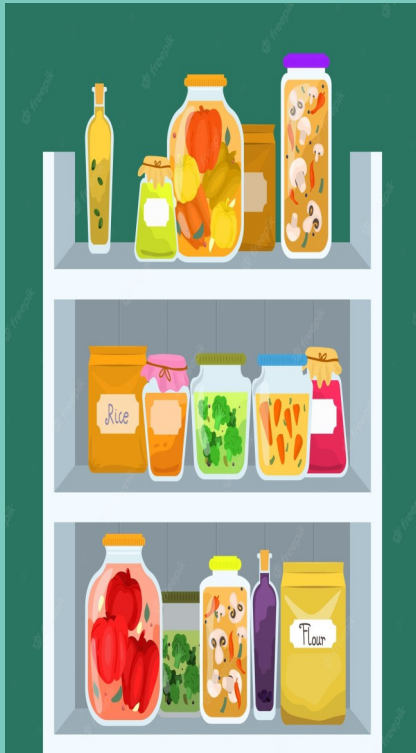
My child could benefit from a phone for travelling to school but I'm worried about the risks. What do I do?

Consider a phone with limited features, such as calls and texts only, or use parental controls to restrict apps and screen time. Talk to your child about safe use, including not sharing personal details and reporting any unwanted contact. Regular check-ins and agreed rules can help reduce risks.



Silver End Academy Pantry

Now by appointment only



If you would like a pantry bag please let Mrs Gigg know via DOJO, email adminsil@inspiresmat.co.uk or via the school Office. We are well stocked at the moment and are able to support with a range of products.

Kind regards Mrs Gigg



Children's medical appointments

If your child needs to attend a medical/
dental

appointment during school time.

Please email adminsil@inspiresmat.co.uk
your proof of medical appointment.





TESCO



TESCO STRONGER STARTS COMMUNITY GRANT



If you shop at Tesco,
vote for us with your
tokens!

Look out for our school project
which aims to ensure children
have an opportunity to promote
their oracy skills and open ended learning opportunities.

The project with the highest number of votes will receive up
to £1,500, second place up to £1,000 and third place up to
£500.

You can find votes for our project in 5 Tesco stores:

Braintree Superstore CM7 3HQ

Braintree Great Notley Superstore CM77 7WW

Braintree Marks Farm Superstore CM77 8AA

Braintree Coggeshall Road Express Express CM7 9EL

Halstead Superstore Superstore CO9 2JN



Parking Reminder

Please be careful when parking your car at school drop off and pick up. We have been made aware that cars are blocking

residents driveways. Please be considerate when parking .

If you see an incident please report it to: <https://north.parkingpartnership.org/enforcement-requests/>



Police dogs—our school premises

As part of our ongoing commitment to support our community, we are proud to let parents know that our local police dog handlers will be using the school premises (out of hours) to train their dogs. This will provide an extra level of security to the school which is good.



School Crossing Patrol Officer Vacancy

Are you looking for an opportunity to support your local community?

Come and join Essex County Council's School Crossing Patrol Team,
We currently have a vacancy serving:

Silver End Academy

£13.00 per hour
Term Time Only - Part Time Hours

To apply visit www.workingforessex.com, or call the Resourcing
Team on **0333 013 5888**.



INSPIRED TO DO MORE



Essex County Council

SILVER END VILLAGE



Friday 17th April

6.30pm

**Congregate near the foundation stone
on the junction of Valentine Way \ Temple Lane \ Broadway**



Laying of foundation stone
in 1926



**6.45pm
Reflections**



Tori Arch
2019

**You are then invited to the park for the official unveiling of the
Tori Arch**

**Afterwards come to the Congregational Church
for the opening of a time capsule, refreshments followed
by a musical performance of music from the last century**

School Crossing Patrol (SCP) Vacancies

**Are you looking for
an opportunity to support
your community?**

There are around 160 School Crossing Patrol sites across the county of Essex. Sometimes known as Lollipop People, SCP Officers work on school days for approximately 40 minutes each morning and afternoon. Hourly rate from £13.00 ph.



Positions available across Essex, including:

Scan this QR code for a direct link to the role:



Or for more information and to apply please visit:

www.workingforessex.com

Email – resourcing.team@essex.gov.uk



Essex County Council

'Head Lice is not nice'



We have had a few reported cases of headlice in school recently.

We kindly ask that you check your child's hair regularly and treat if necessary, to help prevent further spread.

Head lice are a common occurrence in school settings and nothing to be alarmed about. With everyone's support, we can manage this quickly and effectively.

Thank you for your cooperation.



School Car Park

We kindly remind all families that the staff car park is not to be used for drop-off or pick-up at any time, including during Breakfast Club and After School Clubs.

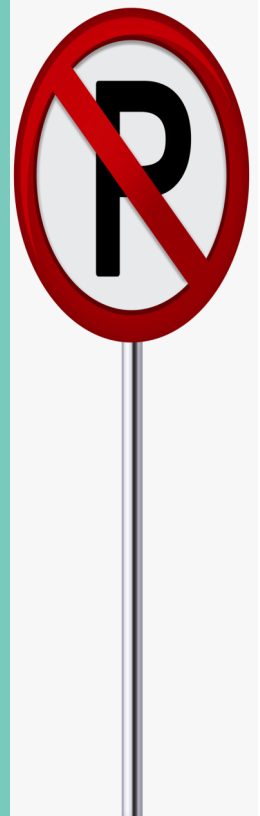
As we have a small car park, it is important that we keep these spaces available for staff and essential deliveries only.

If you have prior agreement from the school office or hold a valid Blue Badge, you may use the designated disabled parking bays.

We appreciate your cooperation in keeping the car park safe and accessible for those who need it.

Thank you for your understanding and support

Mrs Meares – Headteacher





Inspires MAT School Term and Holiday Dates Academic Year 2025-2026

September 2025							October 2025							November 2025							December 2025						
M	T	W	T	F	S	S	M	T	W	T	F	S	S	M	T	W	T	F	S	S	M	T	W	T	F	S	S
									1	2	3	4	5						1	2	1	2	3	4	5	6	7
1	2	3	4	5	6	7	6	7	8	9	10	11	12	3	4	5	6	7	8	9	8	9	10	11	12	13	14
8	9	10	11	12	13	14	13	14	15	16	17	18	19	10	11	12	13	14	15	16	15	16	17	18	19	20	21
15	16	17	18	19	20	21	20	21	22	23	24	25	26	17	18	19	20	21	22	23	22	23	24	25	26	27	28
22	23	24	25	26	27	28	27	28	29	30	31			24	25	26	27	28	29	30	29	30	31				
29	30																										
January 2026							February 2026							March 2026							April 2026						
M	T	W	T	F	S	S	M	T	W	T	F	S	S	M	T	W	T	F	S	S	M	T	W	T	F	S	S
			1	2	3	4							1							1			1	2	3	4	5
5	6	7	8	9	10	11	2	3	4	5	6	7	8	2	3	4	5	6	7	8	6	7	8	9	10	11	12
12	13	14	15	16	17	18	9	10	11	12	13	14	15	9	10	11	12	13	14	15	13	14	15	16	17	18	19
19	20	21	22	23	24	25	16	17	18	19	20	21	22	16	17	18	19	20	21	22	20	21	22	23	24	25	26
26	27	28	29	30	31		23	24	25	26	27	28		23	24	25	26	27	28	29	27	28	29	30			
														30	31												
May 2026							June 2026							July 2026							August 2026						
M	T	W	T	F	S	S	M	T	W	T	F	S	S	M	T	W	T	F	S	S	M	T	W	T	F	S	S
				1	2	3	1	2	3	4	5	6	7			1	2	3	4	5						1	2
4	5	6	7	8	9	10	8	9	10	11	12	13	14	6	7	8	9	10	11	12	3	4	5	6	7	8	9
11	12	13	14	15	16	17	15	16	17	18	19	20	21	13	14	15	16	17	18	19	10	11	12	13	14	15	16
18	19	20	21	22	23	24	22	23	24	25	26	27	28	20	21	22	23	24	25	26	17	18	19	20	21	22	23
25	26	27	28	29	30	31	29	30						27	28	29	30	31			24	25	26	27	28	29	30
																					31						

- = Schooldays
- = School holidays
- = Bank holidays
- = Weekends
- = Inset Days (non-pupil)

In addition, schools allocate five non-pupil days out of the school days indicated, or the equivalent in disaggregated twilight sessions.

Autumn Term:	Monday 1 September 2025 – Friday 19 December 2025 <i>Half Term 27 October – 31 October</i>	75 days
Spring Term:	Monday 5 January 2026 – Friday 27 March 2026 <i>Half Term 16 February - 20 February</i>	55 days
Summer Term:	Monday 13 April 2026 – Monday 20 July 2026 <i>Half Term 25 May – 29 May, and May Bank Holiday - 4 May</i>	65 days
		195 days

Please note:

The above dates may vary for individual schools, especially Foundation, Voluntary Aided schools and Academies.

You are strongly advised to check with your child's school before making any holiday or other commitments.



Inspires MAT School Term and Holiday Dates

Academic Year 2026-2027

September 2026							October 2026							November 2026							December 2026						
M	T	W	T	F	S	S	M	T	W	T	F	S	S	M	T	W	T	F	S	S	M	T	W	T	F	S	S
										1	2	3	4							1		1	2	3	4	5	6
	1	2	3	4	5	6	5	6	7	8	9	10	11	2	3	4	5	6	7	8	7	8	9	10	11	12	13
7	8	9	10	11	12	13	12	13	14	15	16	17	18	9	10	11	12	13	14	15	14	15	16	17	18	19	20
14	15	16	17	18	19	20	19	20	21	22	23	24	25	16	17	18	19	20	21	22	21	22	23	24	25	26	27
21	22	23	24	25	26	27	26	27	28	29	30	31		23	24	25	26	27	28	29	28	29	30	31			
28	29	30												30													
January 2027							February 2027							March 2027							April 2027						
M	T	W	T	F	S	S	M	T	W	T	F	S	S	M	T	W	T	F	S	S	M	T	W	T	F	S	S
				1	2	3	1	2	3	4	5	6	7	1	2	3	4	5	6	7				1	2	3	4
4	5	6	7	8	9	10	8	9	10	11	12	13	14	8	9	10	11	12	13	14	5	6	7	8	9	10	11
11	12	13	14	15	16	17	15	16	17	18	19	20	21	15	16	17	18	19	20	21	12	13	14	15	16	17	18
18	19	20	21	22	23	24	22	23	24	25	26	27	28	22	23	24	25	26	27	28	19	20	21	22	23	24	25
25	26	27	28	29	30	31								29	30	31					26	27	27	29	30		
May 2027							June 2027							July 2027							August 2027						
M	T	W	T	F	S	S	M	T	W	T	F	S	S	M	T	W	T	F	S	S	M	T	W	T	F	S	S
					1	2	1	2	3	4	5	6				1	2	3	4							1	
3	4	5	6	7	8	9	7	8	9	10	11	12	13	5	6	7	8	9	10	11	2	3	4	5	6	7	8
10	11	12	13	14	15	16	14	15	16	17	18	19	20	12	13	14	15	16	17	18	9	10	11	12	13	14	15
17	18	19	20	21	22	23	21	22	23	24	25	26	27	19	20	21	22	23	24	25	16	17	18	19	20	21	22
24	25	26	27	28	29	30	28	29	30					26	27	28	29	30	31	23	24	25	26	27	28	29	
31																					30	31					

= Schooldays

= School holidays

= Bank holidays

= Weekends

In addition, schools allocate five non-pupil days, highlighted yellow, out of the school days indicated, or the equivalent in disaggregated twilight sessions.

Autumn Term:	Tuesday 1 September 2026 – Friday 18 December 2026 <i>Half Term 26 October – 30 October</i>	74 days
Spring Term:	Monday 4 January 2027 – Thursday 25 March 2027 <i>Half Term 15 February - 19 February</i>	54 days
Summer Term:	Monday 12 April 2027 – Wednesday 21 July 2027 <i>Half Term 31 May – 4 June, and May Bank Holiday - 3 May</i>	67 days
		<u>195 days</u>

Please note:

The above dates may vary for individual schools, especially Foundation, Voluntary Aided schools and Academies.

You are strongly advised to check with your child's school before making any holiday or other commitments.



Inspires MAT School Term and Holiday Dates Academic Year 2027-2028

September 2027							October 2027							November 2027							December 2027						
M	T	W	T	F	S	S	M	T	W	T	F	S	S	M	T	W	T	F	S	S	M	T	W	T	F	S	S
										1	2	3	1	2	3	4	5	6	7			1	2	3	4	5	
		1	2	3	4	5	4	5	6	7	8	9	10	8	9	10	11	12	13	14	6	7	8	9	10	11	12
6	7	8	9	10	11	12	11	12	13	14	15	16	17	15	16	17	18	19	20	21	13	14	15	16	17	18	19
13	14	15	16	17	18	19	18	19	20	21	22	23	24	22	23	24	25	26	27	28	20	21	22	23	24	25	26
20	21	22	23	24	25	26	25	26	27	28	29	30	31	29	30					27	28	29	31	31			
27	28	29	30																								
January 2028							February 2028							March 2028							April 2028						
M	T	W	T	F	S	S	M	T	W	T	F	S	S	M	T	W	T	F	S	S	M	T	W	T	F	S	S
					1	2		1	2	3	4	5	6		1	2	3	4	5						1	2	
3	4	5	6	7	8	9	7	8	9	10	11	12	13	6	7	8	9	10	11	12	3	4	5	6	7	8	9
10	11	12	13	14	15	16	14	15	16	17	18	19	20	13	14	15	16	17	18	19	10	11	12	13	14	15	16
17	18	19	20	21	22	23	21	22	23	24	25	26	27	20	21	22	23	24	25	26	17	18	19	20	21	22	23
24	25	26	27	28	29	30	28	29					27	28	29	30	31		24	25	26	27	28	29	30		
31																											
May 2028							June 2028							July 2028							August 2028						
M	T	W	T	F	S	S	M	T	W	T	F	S	S	M	T	W	T	F	S	S	M	T	W	T	F	S	S
1	2	3	4	5	6	7				1	2	3	4						1	2							
8	9	10	11	12	13	14	5	6	7	8	9	10	11	3	4	5	6	7	8	9		1	2	3	4	5	6
15	16	17	18	19	20	21	12	13	14	15	16	17	18	10	11	12	13	14	15	16	7	8	9	10	11	12	13
22	23	24	25	26	27	28	19	20	21	22	23	24	25	17	18	19	20	21	22	23	14	15	16	17	18	19	20
29	30	31					26	27	28	29	30		24	25	26	27	28	29	30	21	22	23	24	25	26	27	
													31						28	29	30	31					

- = Schooldays
- = School holidays
- = Bank holidays
- = Weekends

In addition, schools allocate five non-pupil days, highlighted yellow, out of the school days indicated, or the equivalent in disaggregated twilight sessions.

Autumn Term:	Wednesday 1 September 2027 – Friday 17 December 2027 <i>Half Term 25 October – 29 October</i>	73 days
Spring Term:	Tuesday 4 January 2028 – Friday 31 March 2028 <i>Half Term 14 February - 18 February</i>	59 days
Summer Term:	Tuesday 18 April 2028 – Friday 21 July 2028 <i>Half Term 29 May – 2 June, and May Bank Holiday - 1 May</i>	63 days
		195 days

Please note:
The above dates may vary for individual schools, especially Foundation, Voluntary Aided schools and Academies.
You are strongly advised to check with your child's school before making any holiday or other commitments.

Menu for week commencing 16.03.2026 Week 1

Silver End Academy

Week 1

Monday

Pork Meatballs in Tomato Sauce

served with pasta and salad

Veggie Meatballs in Tomato Sauce
served with pasta and Salad

Jacket Potato with a Choice of toppings



Menu

Tuesday

Minced Beef Chilli
served with fluffy wholemeal rice and Sweetcorn

Curried Samosa
served with fluffy wholemeal rice and Sweetcorn

Jacket Potato with a choice of toppings

Wednesday

Roast Chicken
served with crispy roast potatoes, carrots, broccoli and gravy

Vegetarian Tart
served with crispy roast potatoes, carrots, broccoli and gravy

Jacket Potato with a choice of toppings

Fresh
All our food is cooked fresh each day

Thursday

Spaghetti Bolognese
Served and salad

Macaroni Cheese
Served with sweetcorn and salad

Jacket Potato with a choice of toppings

Healthy
Our pasta, rice and breads are healthy wholemeal products

Friday

Salmon Fish Fingers
served with crispy chips and peas

Quorn Dippers
served with crispy chips and peas

Jacket Potato with a choice of toppings

checked
We always use reputable suppliers and where possible use local produce



Available everyday
A vibrant salad bar, fresh fruit and yoghurt Bread, milk, lactose reduced milk and water

Menu for week commencing 23.03.26 Week 2

Silver End Academy

Week 2

Menu

Monday

Pasta Bar
Pasta with a choice of toppings
Pepperoni, Cheese or Tomato
served with mixed leaves and five
bean salad

Tuesday

Chicken Curry
served with fluffy rice
and Naan Bread served with
Kachumber salad

Wednesday

Roast Chicken
served with crispy roast potatoes,
carrots and peas

Thursday

Sausage Roll
Served with Diced potatoes and
sweetcorn

Friday

Fish Fingers
served with chipped potatoes
and peas

Sweet Treat Friday
Kitchens Choice

Available everyday
A vibrant salad bar, fresh fruit and yoghurt Bread, milk, lactose reduced milk and
water

**Jacket Potato with a choice of
toppings**

Veggie Chilli
served with Fluffy rice and Nachos

**Jacket Potato with a choice of
toppings**

Cheesy BBQ Quorn Fillet
served with crispy toast potatoes,
carrots and peas

**Jacket Potato with a choice of
toppings**

Vegetarian Roll
served with Diced potatoes and
sweetcorn

**Jacket Potato with a choice of
toppings**

Vegetable Frittata
served with chipped potatoes and
peas

**Jacket Potato with a choice of
toppings**



Fresh
All our food is cooked fresh
each day

Healthy
Our pasta, rice and breads
are healthy wholemeal
products

checked
We always use
reputable suppliers and
where possible use
local produce

