

SCHOOL TERM DATES

25/26

- Monday 30th March -Easter Holidays
- Monday 13th April—Return to School
- Monday 25th May—Half Term
- Monday 1st June—Non-pupil Day
- Tuesday 2nd June—Return to School
- Monday 20th July Non-Pupil Day
- Tuesday 21st July—Start of school holidays 2026



SILVER
END
ACADEMY

GROW SHINE SUCCEED

03/03/2026

A Message from Headteacher

Dear Parents and Carers,

Last week, we focused on our core value of **curiosity**. In assembly, we talked about what it means to be curious in our learning — to ask questions, to wonder *why*, and to dig a little deeper. We shared the story *Ada Twist, Scientist*, enjoying the many curious questions Ada asks about the world around her. The children loved reflecting on how curiosity helps us become better learners and thinkers.

This week, we have been discussing **kindness**, using the book *Have You Filled a Bucket Today?* The story helped us think about how our words and actions can “fill” or “dip” into someone’s bucket. It has been lovely to see children recognising small acts of kindness and understanding the difference they can make to each other’s day.

Our School Council met this week and shared the fantastic ideas gathered from their classes about four key learning behaviours every class should follow. We are now combining the children’s ideas with contributions from staff to agree our shared school expectations, which we will share with you in an upcoming newsletter. This week, School Councillors are also speaking with their classes about the behaviours we want to see in the lunch hall and the types of equipment we should consider having available outside at lunchtime. Their thoughtful contributions are helping us continue to improve our school environment.

One of our School Development Plan priorities this year is our **curriculum**. In September, we introduced the Lion Pathways Curriculum from Year 1 to Year 6. It is an ambitious curriculum that explores themes which really make us think deeply about the world around us. Please do ask your child about what they are learning — you may be surprised by the thoughtful discussions taking place in classrooms.

In EYFS, our Inspire Curriculum was introduced in January and has already provided some wonderful learning opportunities through topics such as *Ready, Steady, Grow* and *Once Upon a Time*. The engaging themes are supporting children to develop their vocabulary, knowledge and love of learning.

One of the important ways we check the effectiveness of our curriculum is by asking children what they can remember. We talk to them about their learning from today, yesterday, last week, last month and even last term or last year. Being able to recall and connect their learning helps to strengthen understanding and ensures knowledge truly sticks.

Thank you, as always, for your continued support. It is a pleasure to see our children growing not only in knowledge, but also in curiosity and kindness.

Warm regards,

Mrs Meares

Swimming Pool Update

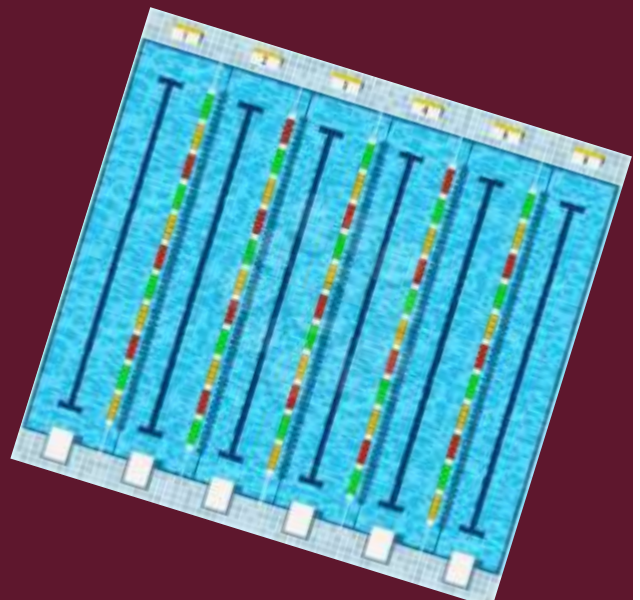
We are writing to share an important update regarding the school swimming pool at Silver End Academy.

Over the past two years, we have worked tirelessly to secure the significant level of funding required to repair and restore the pool. This has included submitting multiple applications and funding bids, as well as exploring a wide range of external grant opportunities. Throughout this process, our PTA has been an exceptional source of support, dedicating substantial time, effort, and enthusiasm to help us try to keep this valued facility open.

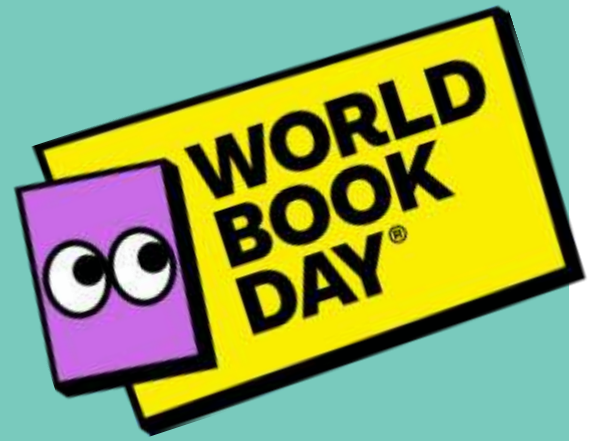
Despite every effort from the school and the PTA, we have unfortunately been unable to secure the substantial financial investment needed. The scale of repairs required far exceeds what can be met through community fundraising or the school's own budget. As a result—and with a heavy heart—we must now confirm that the school swimming pool will be permanently closed. While this was not the outcome any of us had hoped for, we are committed to ensuring that the space continues to serve the children of Silver End in a meaningful and positive way. With this in mind, we will now begin planning how the area can be repurposed to provide the greatest possible benefit for our current pupils.

This process will be collaborative. We will be working closely with the PTA, and we will also be inviting input from the children themselves. Their voices and ideas will play an important role in helping us shape a space that they can enjoy and make use of during their time at Silver End.

We know that many families will feel a sense of loss at this news, and we want to thank you for your continued understanding and support. As plans develop, we will keep the whole school community informed, and we look forward to creating something new, purposeful, and exciting for our children.



We will be celebrating world book day as a school so please encourage your child/ children to dress up and join the fun!



Your child can dress up as a book character –it can be their favourite character, one from their favourite book or one that you have an outfit for at home! If your child would prefer to come ‘dressed as a word’(e.g. athletic, radiant, mysterious) then that would be great too—lets see how imaginative you can be with your ambitious word choices and amazing outfits.

It would be brilliant if the children brought in their favourite book—it would be lovely to hear them read a little extract too.

World book day is not about spending lots of money on outfits, it’s about enjoying books and celebrating the magic of reading. Search your wardrobes, re use what you have already and enjoy getting creative.

Thanks to everyone’s support, our Co-op Local Giving campaign raised an amazing £253.08 for Silver End Academy! With an extra £150 from the Co-op, we’re thrilled to share that a total of £403.08 will be going directly to our school. Thank you for helping us make a difference!



Dates for your diary

- Thursday 5th March —World Book Day
- Week beginning 9th March —Y5 Bikeability
- Wednesday 11th March —Coffee morning—Speech & Language focus
- Monday 16th March—Guitar concert 2pm
- Tuesday 17th March – One Planning meetings (by invite only– contacted nearer the time for appointment)
- Friday 20th March—Spring Art afternoon for parents—save the date!
- Tuesday 24th March – EYFS Ark farm Visit
- Wednesday 25th March—wear green for Cerebral Palsy Day
- Wednesday 25th March—PTA Easter event

Current Class Attendance %

Olympus - 94.63%

Rushmore - 94.35%

Table- 94.40%

Ben Nevis- 93.52%

Fuji- 93.67%

Kilimanjaro- 95.65%

Suilven- 92.51%

Mount Cook- 96.62%

Mont Blanc- 95.48%

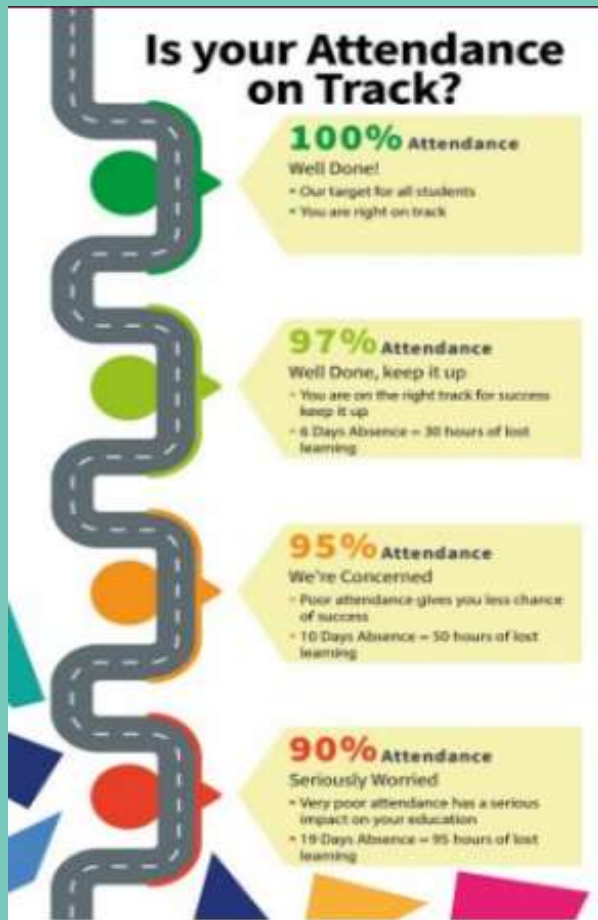
Mount Etna- 97.24%

Snowdon- 94.80%

Aconcagua- 94.29%

Everest- 93.98%

K2- 96.38%



PARENT QUESTIONNAIRES

Thank you to everyone who completed a parent questionnaire at our recent parent consultations. The feedback was really helpful and told us:

- Our children are happy at our school and feel safe
- Most families agree or strongly agree that children are well behaved
- Where concerns are raised, most people feel they have been dealt with properly
- Our children do well at our school and there is a good range of subjects available
- Our families would recommend our school to another parent

What does our school do well...

Parents mentioned communication, after school clubs, relationships, including parents in activities, support for pupils with SEND, support for families

It would be even better if...

More learning opportunities outside, provide an update about the swimming pool, offer more school trips and extra curricular activities, more to do at lunchtime

*Thank you all for continuing to make our school such a wonder place to **grow, shine and succeed***

PTA NEWSLETTER

Find us on Facebook ~ @silverendacademypta

NEW BOOKS!



Thanks to the fantastic fundraising efforts from the Christmas Bingo, we have been able to purchase new books for KS2, KS1 and EYFS, which were delivered to the school before half term.



CONTACT US

Find us on Facebook
@Silverendacademypta
www.facebook.com/silverendacademypta
PTA Email
silverendpta@gmail.com

🐣🌸 EASTER TREASURE HUNT 🌸🐣

Join us on Wednesday 25th March in the school hall, starting straight after school. We can't wait to see you there for some Easter fun! 🐰🌟

OUR PTA IS NOW A REGISTERED CHARITY 🎉

🍰 YEAR 6 CAKE SALE 🍰

As part of our Easter Treasure Hunt event, the Year 6 pupils will also be holding their annual bake sale to raise money for their end-of-year celebration. They have been busy planning and preparing, and would really appreciate your support. Please do stop by to enjoy a sweet treat while helping them raise funds for this special celebration.



IMPORTANT DATES

● WEDNESDAY
25TH MARCH
EASTER TREASURE
HUNT



Silver End Academy



You are invited to drop in at our



COFFEE MORNING



IN THE RAINBOW ROOM

8.45am - 10.30am

Wednesday
11th March 2026

We will be joined by Mrs Meares,
Mrs Gigg, Mrs Hatchman and a
representative from the Speech
and Language team.



JOIN OUR



EASTER TREASURE HUNT

WEDNESDAY 25TH MARCH

STRAIGHT AFTER SCHOOL

ALL PAYING CHILDREN WILL RECEIVE A PRIZE!

*The Year 6s will also be holding
their annual bake sale to raise
money for their celebration.*

*Please come along and support
them!*



Find us on Facebook

@silverendacademypta



Water Bottles

Please make sure your child has a named water bottle in school and you follow the school policy that bottles should only contain water.

Does your child have a mobile phone or are you thinking of getting them one?

There are some really useful top tips and advice on the NSPCC website:

www.nspcc.org.uk/keeping-children-safe/online-safety/children-phones-online-safety/

Questions and answers about children and phones

How do phones impact my child's wellbeing?

Phones can be helpful for communication and learning, but they can also affect wellbeing if not managed carefully.

Risks include disrupted sleep, reduced attention span, and increased anxiety from social media pressures. Setting boundaries and encouraging offline activities helps maintain balance.

I don't want my child to have a phone until they are older. How do I go about doing that?

It's important to explain your reasons clearly and consistently. Focus on the benefits of waiting, such as more time for play and face-to-face interaction. Offer alternatives like family messaging apps on shared devices or basic feature phones without internet access for emergencies.

My child could benefit from a phone for travelling to school but I'm worried about the risks. What do I do?

Consider a phone with limited features, such as calls and texts only, or use parental controls to restrict apps and screen time. Talk to your child about safe use, including not sharing personal details and reporting any unwanted contact. Regular check-ins and agreed rules can help reduce risks.



The 2 Johns

We hope many of you tuned into the 2Johns Zoom as part of Safer Internet Week! 🖥️

✨ The whole school took part, learning important tips and advice on staying safe online. From informative videos to interactive discussions, quizzes and competition, it was a day full of awareness and education for a safer digital world. 🌐

If you missed the live session, please see the recorded video here:

[https://uso2web.zoom.us/rec/share/](https://uso2web.zoom.us/rec/share/laUzIzcEpsoloY8mKf2ImKrm-Pwh1KITU6E2BFT2D_9ws3SNqj7P64KHj2FF2yXDf.LFMp3oN8eD5VIBWe)

[laUzIzcEpsoloY8mKf2ImKrm-](https://uso2web.zoom.us/rec/share/laUzIzcEpsoloY8mKf2ImKrm-Pwh1KITU6E2BFT2D_9ws3SNqj7P64KHj2FF2yXDf.LFMp3oN8eD5VIBWe)

[Pwh1KITU6E2BFT2D_9ws3SNqj7P64KHj2FF2yXDf.LFMp3oN8eD5VIBWe](https://uso2web.zoom.us/rec/share/laUzIzcEpsoloY8mKf2ImKrm-Pwh1KITU6E2BFT2D_9ws3SNqj7P64KHj2FF2yXDf.LFMp3oN8eD5VIBWe)



Measles in North London

The large outbreak of measles in children in North London and our proximity to the capital means there will be cases of measles in Essex children. A child with measles should not attend educational settings until 4 full days after their rash appeared. Guidance for educational settings can be found on the [Government website](#), with [advice to parent](#) also available. General information on [measles](#) is available on the NHS webpages. Parents and guardians of children in need of measles vaccination can arrange this by contacting the [East of England community and school-aged immunisation service](#) on 0300 555 5055 or through their GP practice.

Silver End Academy Pantry

Now by appointment only

If you would like a pantry bag please let Mrs Gigg know via DOJO, email adminsil@inspiresmat.co.uk or via the school Office. We are well stocked at the moment and are able to support with a range of products.

Kind regards Mrs Gigg



Children's medical appointments

If your child needs to attend a medical/dental appointment during school time.

Please email adminsil@inspiresmat.co.uk your proof of medical appointment.



Celebrating your Child's Birthday



Don't forget to book in for lunch to celebrate your child's birthday!

- One adult can book in to have lunch, on or near, your child's birthday.
- Go to Parentmail and buy an adult lunch, priced at £3.20 you can also have a packed lunch if you wish.
- Email the school office at least a week in advance so we can book you in and we can let our catering team know.
- If you have missed your child's birthday (September – now), please don't worry – find a convenient day and book to have lunch this term or next term.
- When you come to school (12pm), your child will meet you at the office and you'll be taking to the hall to have lunch. Once you've finished eating, you'll be brought back to the school office.





TESCO STRONGER STARTS COMMUNITY GRANT

**If you shop at Tesco, vote
for us with your tokens!**

Look out for our school project which aims to ensure children have an opportunity to promote their oracy skills and open ended learning opportunities.

The project with the highest number of votes will receive up to £1,500, second place up to £1,00 and third place up to £500.

You can find votes for our project in 5 Tesco stores:

Braintree Superstore CM7 3HQ

Braintree Great Notley Superstore CM77 7WW

Braintree Marks Farm Superstore CM77 8AA

Braintree Coggeshall Road Express Express CM7 9EL

Halstead Superstore Superstore CO9 2JN



Parking Reminder

Please be careful when parking your car at school drop off and pick up. We have been made aware that cars are blocking

residents driveways. Please be considerate when parking .

If you see an incident please report it to: <https://north.parkingpartnership.org/enforcement-requests/>



Police dogs—our school premises

As part of our ongoing commitment to support our community, we are proud to let parents know that our local police dog handlers will be using the school premises (out of hours) to train their dogs. This will provide an extra level of security to the school which is good.



School Crossing Patrol Officer Vacancy

Are you looking for an opportunity to support your local community?

Come and join Essex County Council's School Crossing Patrol Team,
We currently have a vacancy serving:

Silver End Academy

£13.00 per hour

Term Time Only - Part Time Hours

To apply visit www.workingforessex.com, or call the Resourcing
Team on **0333 013 5888**.



INSPIRED TO DO MORE



School Crossing Patrol (SCP) Vacancies

**Are you looking for
an opportunity to support
your community?**

There are around 160 School Crossing Patrol sites across the county of Essex. Sometimes known as Lollipop People, SCP Officers work on school days for approximately 40 minutes each morning and afternoon. Hourly rate from £13.00 ph.



Positions available across Essex, including:

Scan this QR code for a direct link to the role:



Or for more information and to apply please visit:

www.workingforessex.com

Email – resourcing.team@essex.gov.uk



Essex County Council

'Head Lice is not nice'



We have had a few reported cases of headlice in school recently.

We kindly ask that you check your child's hair regularly and treat if necessary, to help prevent further spread.

Head lice are a common occurrence in school settings and nothing to be alarmed about. With everyone's support, we can manage this quickly and effectively.



Thank you for your cooperation.

School Car Park

We kindly remind all families that the staff car park is not to be used for drop-off or pick-up at any time, including during Breakfast Club and After School Clubs.

As we have a small car park, it is important that we keep these spaces available for staff and essential deliveries only.

If you have prior agreement from the school office or hold a valid Blue Badge, you may use the designated disabled parking bays.

We appreciate your cooperation in keeping the car park safe and accessible for those who need it.

Thank you for your understanding and support

Mrs Meares – Headteacher





Inspires MAT School Term and Holiday Dates Academic Year 2025-2026

September 2025							October 2025							November 2025							December 2025						
M	T	W	T	F	S	S	M	T	W	T	F	S	S	M	T	W	T	F	S	S	M	T	W	T	F	S	S
									1	2	3	4	5						1	2	1	2	3	4	5	6	7
1	2	3	4	5	6	7	6	7	8	9	10	11	12	3	4	5	6	7	8	9	8	9	10	11	12	13	14
8	9	10	11	12	13	14	13	14	15	16	17	18	19	10	11	12	13	14	15	16	15	16	17	18	19	20	21
15	16	17	18	19	20	21	20	21	22	23	24	25	26	17	18	19	20	21	22	23	22	23	24	25	26	27	28
22	23	24	25	26	27	28	27	28	29	30	31			24	25	26	27	28	29	30	29	30	31				
29	30																										
January 2026							February 2026							March 2026							April 2026						
M	T	W	T	F	S	S	M	T	W	T	F	S	S	M	T	W	T	F	S	S	M	T	W	T	F	S	S
			1	2	3	4							1							1			1	2	3	4	5
5	6	7	8	9	10	11	2	3	4	5	6	7	8	2	3	4	5	6	7	8	6	7	8	9	10	11	12
12	13	14	15	16	17	18	9	10	11	12	13	14	15	9	10	11	12	13	14	15	13	14	15	16	17	18	19
19	20	21	22	23	24	25	16	17	18	19	20	21	22	16	17	18	19	20	21	22	20	21	22	23	24	25	26
26	27	28	29	30	31		23	24	25	26	27	28		23	24	25	26	27	28	29	27	28	29	30			
														30	31												
May 2026							June 2026							July 2026							August 2026						
M	T	W	T	F	S	S	M	T	W	T	F	S	S	M	T	W	T	F	S	S	M	T	W	T	F	S	S
				1	2	3	1	2	3	4	5	6	7			1	2	3	4	5						1	2
4	5	6	7	8	9	10	8	9	10	11	12	13	14	6	7	8	9	10	11	12	3	4	5	6	7	8	9
11	12	13	14	15	16	17	15	16	17	18	19	20	21	13	14	15	16	17	18	19	10	11	12	13	14	15	16
18	19	20	21	22	23	24	22	23	24	25	26	27	28	20	21	22	23	24	25	26	17	18	19	20	21	22	23
25	26	27	28	29	30	31	29	30					27	28	29	30	31			24	25	26	27	28	29	30	
																					31						

- = Schooldays
- = School holidays
- = Bank holidays
- = Weekends
- = Inset Days (non-pupil)

In addition, schools allocate five non-pupil days out of the school days indicated, or the equivalent in disaggregated twilight sessions.

Autumn Term:	Monday 1 September 2025 – Friday 19 December 2025 <i>Half Term 27 October – 31 October</i>	75 days
Spring Term:	Monday 5 January 2026 – Friday 27 March 2026 <i>Half Term 16 February – 20 February</i>	55 days
Summer Term:	Monday 13 April 2026 – Monday 20 July 2026 <i>Half Term 25 May – 29 May, and May Bank Holiday - 4 May</i>	65 days
		195 days

Please note:

The above dates may vary for individual schools, especially Foundation, Voluntary Aided schools and Academies.

You are strongly advised to check with your child's school before making any holiday or other commitments.



Inspires MAT School Term and Holiday Dates

Academic Year 2026-2027

September 2026							October 2026							November 2026							December 2026						
M	T	W	T	F	S	S	M	T	W	T	F	S	S	M	T	W	T	F	S	S	M	T	W	T	F	S	S
										1	2	3	4							1		1	2	3	4	5	6
1	2	3	4	5	6		5	6	7	8	9	10	11	2	3	4	5	6	7	8	7	8	9	10	11	12	13
7	8	9	10	11	12	13	12	13	14	15	16	17	18	9	10	11	12	13	14	15	14	15	16	17	18	19	20
14	15	16	17	18	19	20	19	20	21	22	23	24	25	16	17	18	19	20	21	22	21	22	23	24	25	26	27
21	22	23	24	25	26	27	26	27	28	29	30	31		23	24	25	26	27	28	29	28	29	30	31			
28	29	30												30													
January 2027							February 2027							March 2027							April 2027						
M	T	W	T	F	S	S	M	T	W	T	F	S	S	M	T	W	T	F	S	S	M	T	W	T	F	S	S
				1	2	3	1	2	3	4	5	6	7	1	2	3	4	5	6	7				1	2	3	4
4	5	6	7	8	9	10	8	9	10	11	12	13	14	8	9	10	11	12	13	14	5	6	7	8	9	10	11
11	12	13	14	15	16	17	15	16	17	18	19	20	21	15	16	17	18	19	20	21	12	13	14	15	16	17	18
18	19	20	21	22	23	24	22	23	24	25	26	27	28	22	23	24	25	26	27	28	19	20	21	22	23	24	25
25	26	27	28	29	30	31								29	30	31					26	27	27	29	30		
May 2027							June 2027							July 2027							August 2027						
M	T	W	T	F	S	S	M	T	W	T	F	S	S	M	T	W	T	F	S	S	M	T	W	T	F	S	S
					1	2		1	2	3	4	5	6				1	2	3	4							1
3	4	5	6	7	8	9	7	8	9	10	11	12	13	5	6	7	8	9	10	11	2	3	4	5	6	7	8
10	11	12	13	14	15	16	14	15	16	17	18	19	20	12	13	14	15	16	17	18	9	10	11	12	13	14	15
17	18	19	20	21	22	23	21	22	23	24	25	26	27	19	20	21	22	23	24	25	16	17	18	19	20	21	22
24	25	26	27	28	29	30	28	29	30					26	27	28	29	30	31	23	24	25	26	27	28	29	
31																					30	31					

□ = Schooldays

■ = School holidays

■ = Bank holidays

■ = Weekends

In addition, schools allocate five non-pupil days, highlighted yellow, out of the school days indicated, or the equivalent in disaggregated twilight sessions.

Autumn Term:	Tuesday 1 September 2026 – Friday 18 December 2026 <i>Half Term 26 October – 30 October</i>	74 days
Spring Term:	Monday 4 January 2027 – Thursday 25 March 2027 <i>Half Term 15 February – 19 February</i>	54 days
Summer Term:	Monday 12 April 2027 – Wednesday 21 July 2027 <i>Half Term 31 May – 4 June, and May Bank Holiday - 3 May</i>	67 days
		<u>195 days</u>

Please note:

The above dates may vary for individual schools, especially Foundation, Voluntary Aided schools and Academies.

You are strongly advised to check with your child's school before making any holiday or other commitments.



Inspires MAT School Term and Holiday Dates

Academic Year 2027-2028

September 2027							October 2027							November 2027							December 2027						
M	T	W	T	F	S	S	M	T	W	T	F	S	S	M	T	W	T	F	S	S	M	T	W	T	F	S	S
										1	2	3	1	2	3	4	5	6	7			1	2	3	4	5	
		1	2	3	4	5	4	5	6	7	8	9	10	8	9	10	11	12	13	14	6	7	8	9	10	11	12
6	7	8	9	10	11	12	11	12	13	14	15	16	17	15	16	17	18	19	20	21	13	14	15	16	17	18	19
13	14	15	16	17	18	19	18	19	20	21	22	23	24	22	23	24	25	26	27	28	20	21	22	23	24	25	26
20	21	22	23	24	25	26	25	26	27	28	29	30	31	29	30						27	28	29	31	31		
27	28	29	30																								

January 2028							February 2028							March 2028							April 2028						
M	T	W	T	F	S	S	M	T	W	T	F	S	S	M	T	W	T	F	S	S	M	T	W	T	F	S	S
					1	2		1	2	3	4	5	6		1	2	3	4	5						1	2	
3	4	5	6	7	8	9	7	8	9	10	11	12	13	6	7	8	9	10	11	12	3	4	5	6	7	8	9
10	11	12	13	14	15	16	14	15	16	17	18	19	20	13	14	15	16	17	18	19	10	11	12	13	14	15	16
17	18	19	20	21	22	23	21	22	23	24	25	26	27	20	21	22	23	24	25	26	17	18	19	20	21	22	23
24	25	26	27	28	29	30	28	29						27	28	29	30	31			24	25	26	27	28	29	30
31																											

May 2028							June 2028							July 2028							August 2028						
M	T	W	T	F	S	S	M	T	W	T	F	S	S	M	T	W	T	F	S	S	M	T	W	T	F	S	S
1	2	3	4	5	6	7				1	2	3	4						1	2							
8	9	10	11	12	13	14	5	6	7	8	9	10	11	3	4	5	6	7	8	9		1	2	3	4	5	6
15	16	17	18	19	20	21	12	13	14	15	16	17	18	10	11	12	13	14	15	16	7	8	9	10	11	12	13
22	23	24	25	26	27	28	19	20	21	22	23	24	25	17	18	19	20	21	22	23	14	15	16	17	18	19	20
29	30	31					26	27	28	29	30			24	25	26	27	28	29	30	21	22	23	24	25	26	27
														31							28	29	30	31			

- = Schooldays
- = School holidays
- = Bank holidays
- = Weekends

In addition, schools allocate five non-pupil days, highlighted yellow, out of the school days indicated, or the equivalent in disaggregated twilight sessions.

Autumn Term:	Wednesday 1 September 2027 – Friday 17 December 2027 <i>Half Term 25 October – 29 October</i>	73 days
Spring Term:	Tuesday 4 January 2028 – Friday 31 March 2028 <i>Half Term 14 February - 18 February</i>	59 days
Summer Term:	Tuesday 18 April 2028 – Friday 21 July 2028 <i>Half Term 29 May – 2 June, and May Bank Holiday - 1 May</i>	63 days
		<u>195 days</u>

Please note:
 The above dates may vary for individual schools, especially Foundation, Voluntary Aided schools and Academies.
 You are strongly advised to check with your child's school before making any holiday or other commitments.

Menu for week commencing 02.03.2026 Week 2

Silver End Academy

Week 2

Monday

Pasta Bar

Pasta with a choice of toppings
Pepperoni, Cheese or Tomato
served with mixed leaves and five
bean salad

Tuesday

Chicken Curry

served with fluffy rice
and Naan Bread served with
Kachumber salad

Wednesday

Roast Chicken

served with crispy roast potatoes,
carrots and peas

Thursday

Sausage Roll

Served with Diced potatoes and
sweetcorn

Friday

Fish Fingers

served with chipped potatoes
and peas

Sweet Treat Friday

Kitchens Choice

Jacket Potato with a choice of
toppings

Veggie Chilli

served with Fluffy rice and Nachos

Jacket Potato with a choice of
toppings

Cheesy BBQ Quorn Fillet

served with crispy toast potatoes,
carrots and peas

Jacket Potato with a choice of
toppings

Vegetarian Roll

served with Diced potatoes and
sweetcorn

Jacket Potato with a choice of
toppings

Vegetable Frittata

served with chipped potatoes and
peas

Jacket Potato with a choice of
toppings

Available everyday

A vibrant salad bar, fresh fruit and yoghurt bread, milk, lactose reduced milk and
water



Menu

Fresh

All our food is cooked fresh
each day

Healthy

Our pasta, rice and breads
are healthy wholemeal
products

checked

We always use
reputable suppliers and
where possible use
local produce



Menu for week commencing 09.03.26 Week 3

Silver End Academy

Week 3

Monday

Pizza Day
Pepperoni
served with mixed leaves and five bean salad

Pizza Day
Cheese & Tomato
served with salad



Tuesday

Sausage and Mashed Potato
Served with baked beans or peas (gravy available)

Jacket Potato with a choice of toppings

Quorn Sausage and Mashed Potato served with baked beans or peas (gravy available)



Wednesday

Sticky Chicken
served with wholemeal rice and corn on the cob

Jacket Potato with a choice of toppings

Cheese & Tomato Whirl
served with wholemeal rice and corn on the cob

Fresh
All our food is cooked fresh each day

Thursday

Brunch Lunch
Sausage, bacon, egg, hash brown and baked beans

Jacket Potato with a choice of toppings

Veg Brunch Lunch
Quorn Sausage, egg, hash brown and baked beans

Healthy
Our pasta, rice and breads are healthy wholemeal products

Friday

Jumbo Fishfinger
served with crispy chips and peas

Jacket Potato with a choice of toppings

Southern veggie burger/no bun
served with crispy chips and peas

checked
We always use reputable suppliers and where possible use local produce

Sweet Treat Friday
Kitchens choice

Jacket Potato with a choice of toppings



Available everyday
A vibrant salad bar, fresh fruit and yogurt, bread, milk, lactose reduced milk and water

Activate Windows

Menu