

## SCHOOL TERM DATES

25/26

- Monday 16th February—  
Half term
- Monday 30th March -Easter  
Holidays
- Monday 13th April—Return  
to School
- Monday 25th May—Half  
Term
- Monday 1st June—Non-  
pupil Day
- Tuesday 2nd June—Return  
to School
- Monday 20th July Non-Pupil  
Day
- Tuesday 21st July—Start of  
school holidays 2026



SILVER  
END  
ACADEMY  
GROW SHINE SUCCEED

9 / 0 2 / 2 0 2 6

## A Message from Headteacher

Dear Parents and Carers,

Last week, we spent time focusing on our core value of **responsibility**. In assembly, we talked about the importance of not assuming that *somebody* or *anybody* will do something, as this can sometimes lead to *nobody* doing it at all. The children reflected thoughtfully on how taking responsibility for our actions — and for our learning — helps our school community to thrive.

This coming week is **Children's Mental Health Week**, and our theme will be '*This is my place*'. We will be thinking about how Silver End Academy is *our* place, what makes it special to us, and how we can all play our part in making it a safe, welcoming and happy environment for everyone. You are all part of our school community too—what makes it special to you?

Our School Council met last week and shared their understanding of our **feedback and marking policy**. The children showed a strong understanding of what the different marking codes mean and, importantly, that it is okay to make mistakes — as this is how we learn and improve. This week, School Councillors will be talking to their classes about the behaviours we want to see when we are learning, helping to ensure that everyone can learn in the best possible environment.

Last week, we welcomed a group of teachers from the local Maths Hub. They went on a learning walk, looking at maths teaching across the school. The feedback we had was really positive, with leaders commenting on how clear the modelling of concepts was and how well children are able to talk about their learning.

One of our key school priorities continues to be **improving attendance**. Parents will know that we have been sending Dojos to families to check in and see whether any support is needed with attendance. We have also increased the ways we celebrate good attendance, including the introduction of **half-termly certificates** to recognise children who attend school **95% or more** of the time. Each week, the class with the best attendance wins **cake for the class** — a real highlight of the week for our children! Our whole-school attendance is currently **94.75%**, and we are aiming for **at least 96%**, so we really do need your help and support with this.

We are also very much looking forward to welcoming parents into school this week for our **parent consultations**. As before, there will be an opportunity for parents to share their feedback about the school, similar to the consultations held in October. That feedback highlighted how keen parents are to be involved and come into school — something we have acted upon by arranging our wonderful Winter Craft Afternoon (with a Spring one planned for next half term), as well as phonics and spelling sessions for EYFS, Year 1 and Year 2.

Thank you, as always, for your continued support. We look forward to seeing many of you in school this week.

Warm regards,

Mrs Meares


# PTA NEWSLETTER


Find us on Facebook ~ @silverendacademypta

## ANNOUNCEMENTS

 Adults Only Silent Disco   
Join us for a fun night out  
supporting the school!

 Friday 27th February 2026,  
8-11pm

 Silver End Village Hall

 Tickets available now:  
[www.ticketsource.co.uk/silver  
-end-academy-pta](http://www.ticketsource.co.uk/silver-end-academy-pta)  
Headphones provided.  
Adults only.

## CONTACT US

Find us on Facebook  
@Silverendacademypta  
[www.facebook.com/  
silverendacademypta](http://www.facebook.com/silverendacademypta)  
PTA Email  
[silverendpta@gmail.com](mailto:silverendpta@gmail.com)


## NEW BOOKS COMING SOON!

We've started ordering  
the requested books for  
KS2. Thanks to our  
successful fundraising,  
we've also been able to  
order books for KS1 &  
EYFS using the  
Christmas Bingo money.

**OUR TOTALS**  
**£755.98**

## "WEAR WHAT YOU LOVE" NON-UNIFORM DAY!

Join us for our Valentine's "Wear What You Love" non-uniform day! Children are invited to wear their favourite colours, characters, or outfits on Friday 13th February.

A £1 donation per child is kindly requested to support PTA fundraising.  
Thank you for your support 

## IMPORTANT DATES

-  **FRIDAY 13<sup>TH</sup> FEBRUARY**  
NON-UNIFORM DAY  
WEAR WHAT YOU LOVE
-  **SATURDAY 27<sup>TH</sup> FEBRUARY**  
SILENT DISCO -  
ADULT ONLY
-  **TUESDAY 24<sup>TH</sup> MARCH**  
EASTER EVENT

SILVER END ACADEMY PTA

**ADULTS ONLY**

# SILENT DISCO

**Friday 27th February 2026**

**8:00pm – 11:00pm**



**Silver End Village Hall**

3 Broadway, Silver End  
CM8 3RQ

## WHAT TO EXPECT:

- Headphones Provided
- Multiple Music Channels
- A Great Night Out Supporting Silver End Academy

**18+ ADULTS ONLY EVENT!**

Please Note: Only drinks & snacks purchased at the event  
may be consumed.

*Dance the night away with us!*

## Dates for your diary

- Tuesday 10th February – Parent consultation
- Wednesday 11th February—The 2 John’s—parent session
- Thursday 12th February – Parent consultation
- Friday 13th February – PTA Valentines non– uniform
- Wednesday 25th February – Year 5 Science Museum trip
- Thursday 26th February – Class photographs
- Friday 27th February – Silent Disco PTA
- Thursday 5th March —World Book Day
- Week beginning 9th March —Y5 Bikeability—details to follow
- Wednesday 11th March —Coffee morning—Speech & Language focus
- Tuesday 17th March – One Planning meetings (by invite only– contacted nearer the time for appointment)
- Friday 20th March—Spring Art afternoon for parents—save the date!
- Tuesday 24th March – EYFS Ark farm Visit
- Wednesday 25th March—wear green for Cerebral Palsy Day
- Wednesday 25th March—PTA Easter event

## Attendance Certificates

We're excited to share that we'll be introducing attendance certificates on a half-termly basis as part of our ongoing focus on celebrating positive attendance habits.

This links closely with our School Development Priorities and our commitment to supporting children to be in school regularly and thrive.

Our first set of certificates will be given out next week. To keep things simple, certificates will be presented in classrooms.

The attendance thresholds are:

- **Bronze:** 95% attendance or above
- **Silver:** 97% attendance or above

**Gold:** 100% attendance

We're really looking forward to recognising pupils for their fantastic attendance and hope this helps motivate everyone to keep up the great work. Thank you for your continued support — it really does make a difference.



## Current Class Attendance %

Olympus - 94.62%

Rushmore - 94.86%

Table - 94.19%

Ben Nevis - 93.60%

Fuji - 93.58%

Kilimanjaro - 95.46%

Suilven - 92.40%

Mount Cook - 96.13%

Mont Blanc - 95.85%

Mount Etna - 97.16%

Snowdon - 94.98%

Aconcagua - 94.94%

Everest - 93.86%

K2 - 96.18%

# HEALTHY SNACKS

Children should only bring fruit or vegetables for their snack at breaktime to help us stay a healthy and nut-free school.



## Water Bottles

Please make sure your child has a named water bottle in school and you follow the school policy that bottles should only contain water.

# VALENTINE'S WEAR WHAT YOU LOVE

NON-UNIFORM DAY

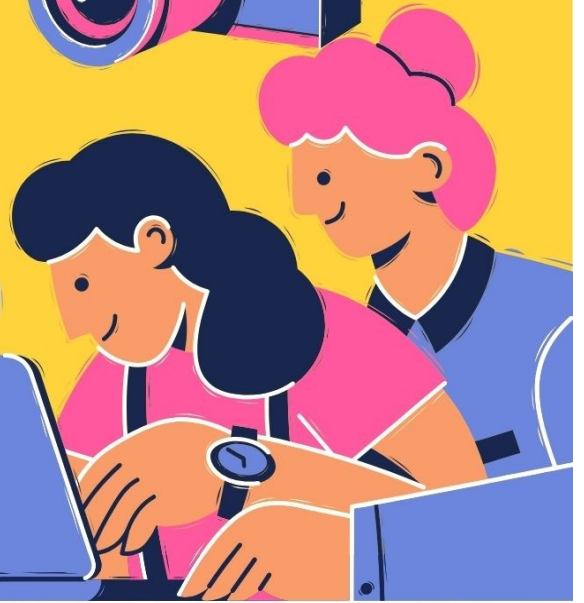
Wear your fave colours, character, etc!



£1 donation  
per child

Friday 13th February

# THE 2 JOHNS KEEPING CHILDREN SAFE



## SAFER INTERNET WEEK ONLINE EVENT

<https://us02web.zoom.us/j/86536198942>

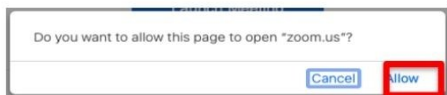
11 Feb 2026 at 20:00-21:30

### On Line Joining Instructions For Parents

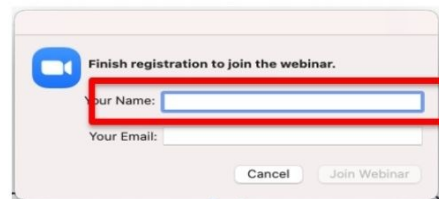
All Session will be live 10 mins before the requested Start time.

Please ask the parents to click on the Link provided to the school (taken from your booking form) to access the relevant session

Your Browser will then open zoom and you will see this box.



Click on **Allow** button and you will then get the log in box



Please instruct the Parent to log on using one of the following instructions.

Please ask each parent to enter in the **'Your Name' Box'**

The following information :-

For One Child at a school e.g. = School Name / Y3 (One child in Year 3)

For Two Children at a school = School Name / Y1 & Y5 (Two Children)



## Silver End Academy Pantry

Now by appointment only

If you would like a pantry bag please let Mrs Gigg know via DOJO, email [adminsil@inspiresmat.co.uk](mailto:adminsil@inspiresmat.co.uk) or via the school Office. We are well stocked at the moment and are able to support with a range of products.

Kind regards Mrs Gigg



## Children's medical appointments

If your child needs to attend a medical/dental appointment during school time.

Please email [adminsil@inspiresmat.co.uk](mailto:adminsil@inspiresmat.co.uk) your proof of medical appointment.




**Parent Consultations will  
take place on :**

**Tuesday 10th February  
2026**

**Thursday 12th February  
2026**


Bookings will open on Parent Mail soon for you to book a time slot.

**With the exception of Mount Cook (Mrs Turner)  
which they will take place instead on**



**East of England  
CCOP**

**Local Giving**



**We've been chosen by the East of England Co-op's Silver End food store  
as their Local Giving charity for winter.**  
**Over the next three months, they'll be:**

- 💰 Collecting donations for us
- 📣 Raising awareness of our work

Pop in store to get involved and donate!

**#LocalGiving #SupportingCommunities #SupportLocal**



## Celebrating your Child's Birthday



Don't forget to book in for lunch to celebrate your child's birthday!

- One adult can book in to have lunch, on or near, your child's birthday.
- Go to Parentmail and buy an adult lunch, priced at £3.20 you can also have a packed lunch if you wish.
- Email the school office at least a week in advance so we can book you in and we can let our catering team know.
- If you have missed your child's birthday (September – now), please don't worry – find a convenient day and book to have lunch this term or next term.
- When you come to school (12pm), your child will meet you at the office and you'll be taking to the hall to have lunch. Once you've finished eating, you'll be brought back to the school office.





## TESCO STRONGER STARTS COMMUNITY GRANT

**If you shop at Tesco, vote  
for us with your tokens!**

Look out for our school project which aims to ensure children have an opportunity to promote their oracy skills and open ended learning opportunities.

The project with the highest number of votes will receive up to £1,500, second place up to £1,00 and third place up to £500.

You can find votes for our project in 5 Tesco stores:

Braintree Superstore CM7 3HQ

Braintree Great Notley Superstore CM77 7WW

Braintree Marks Farm Superstore CM77 8AA

Braintree Coggeshall Road Express Express CM7 9EL

Halstead Superstore Superstore CO9 2JN



## Parking Reminder

Please be careful when parking your car at school drop off and pick up. We have been made aware that cars are blocking

residents driveways. Please be considerate when parking .

If you see an incident please report it to: <https://north.parkingpartnership.org/enforcement-requests/>



# School Crossing Patrol Officer Vacancy

Are you looking for an opportunity to support your local community?

Come and join Essex County Council's School Crossing Patrol Team,  
We currently have a vacancy serving:

## Silver End Academy

**£13.00** per hour  
**Term Time Only - Part Time Hours**

To apply visit [www.workingforessex.com](http://www.workingforessex.com), or call the Resourcing  
Team on **0333 013 5888**.



**INSPIRED TO DO MORE**



# School Crossing Patrol (SCP) Vacancies

**Are you looking for  
an opportunity to support  
your community?**

There are around 160 School Crossing Patrol sites across the county of Essex. Sometimes known as Lollipop People, SCP Officers work on school days for approximately 40 minutes each morning and afternoon. Hourly rate from £13.00 ph.



Positions available across Essex, including:

Scan this QR code for a direct link to the role:



Or for more information and to apply please visit:

[www.workingforessex.com](http://www.workingforessex.com)

Email – [resourcing.team@essex.gov.uk](mailto:resourcing.team@essex.gov.uk)



Essex County Council

## 'Head Lice is not nice'



We have had a few reported cases of headlice in school recently.

We kindly ask that you check your child's hair regularly and treat if necessary, to help prevent further spread.

Head lice are a common occurrence in school settings and nothing to be alarmed about. With everyone's support, we can manage this quickly and effectively.



Thank you for your cooperation.

## School Car Park

We kindly remind all families that the staff car park is not to be used for drop-off or pick-up at any time, including during Breakfast Club and After School Clubs.

As we have a small car park, it is important that we keep these spaces available for staff and essential deliveries only.

If you have prior agreement from the school office or hold a valid Blue Badge, you may use the designated disabled parking bays.

We appreciate your cooperation in keeping the car park safe and accessible for those who need it.

Thank you for your understanding and support

Mrs Meares – Headteacher





## Inspires MAT School Term and Holiday Dates Academic Year 2025-2026

September 2025							October 2025							November 2025							December 2025						
M	T	W	T	F	S	S	M	T	W	T	F	S	S	M	T	W	T	F	S	S	M	T	W	T	F	S	S
									1	2	3	4	5						1	2	1	2	3	4	5	6	7
1	2	3	4	5	6	7	6	7	8	9	10	11	12	3	4	5	6	7	8	9	8	9	10	11	12	13	14
8	9	10	11	12	13	14	13	14	15	16	17	18	19	10	11	12	13	14	15	16	15	16	17	18	19	20	21
15	16	17	18	19	20	21	20	21	22	23	24	25	26	17	18	19	20	21	22	23	22	23	24	25	26	27	28
22	23	24	25	26	27	28	27	28	29	30	31			24	25	26	27	28	29	30	29	30	31				
29	30																										

January 2026							February 2026							March 2026							April 2026						
M	T	W	T	F	S	S	M	T	W	T	F	S	S	M	T	W	T	F	S	S	M	T	W	T	F	S	S
			1	2	3	4							1							1			1	2	3	4	5
5	6	7	8	9	10	11	2	3	4	5	6	7	8	2	3	4	5	6	7	8	6	7	8	9	10	11	12
12	13	14	15	16	17	18	9	10	11	12	13	14	15	9	10	11	12	13	14	15	13	14	15	16	17	18	19
19	20	21	22	23	24	25	16	17	18	19	20	21	22	16	17	18	19	20	21	22	20	21	22	23	24	25	26
26	27	28	29	30	31		23	24	25	26	27	28		23	24	25	26	27	28	29	27	28	29	30			
														30	31												

May 2026							June 2026							July 2026							August 2026						
M	T	W	T	F	S	S	M	T	W	T	F	S	S	M	T	W	T	F	S	S	M	T	W	T	F	S	S
				1	2	3	1	2	3	4	5	6	7			1	2	3	4	5						1	2
4	5	6	7	8	9	10	8	9	10	11	12	13	14	6	7	8	9	10	11	12	3	4	5	6	7	8	9
11	12	13	14	15	16	17	15	16	17	18	19	20	21	13	14	15	16	17	18	19	10	11	12	13	14	15	16
18	19	20	21	22	23	24	22	23	24	25	26	27	28	20	21	22	23	24	25	26	17	18	19	20	21	22	23
25	26	27	28	29	30	31	29	30					27	28	29	30	31			24	25	26	27	28	29	30	
																					31						

- = Schooldays
- = School holidays
- = Bank holidays
- = Weekends
- = Inset Days (non-pupil)

In addition, schools allocate five non-pupil days out of the school days indicated, or the equivalent in disaggregated twilight sessions.

<b>Autumn Term:</b>	Monday 1 September 2025 – Friday 19 December 2025 <i>Half Term 27 October – 31 October</i>	75 days
<b>Spring Term:</b>	Monday 5 January 2026 – Friday 27 March 2026 <i>Half Term 16 February - 20 February</i>	55 days
<b>Summer Term:</b>	Monday 13 April 2026 – Monday 20 July 2026 <i>Half Term 25 May – 29 May, and May Bank Holiday - 4 May</i>	65 days
		195 days

**Please note:**

The above dates may vary for individual schools, especially Foundation, Voluntary Aided schools and Academies.

You are strongly advised to check with your child's school before making any holiday or other commitments.



# Inspires MAT School Term and Holiday Dates

## Academic Year 2026-2027

September 2026							October 2026							November 2026							December 2026						
M	T	W	T	F	S	S	M	T	W	T	F	S	S	M	T	W	T	F	S	S	M	T	W	T	F	S	S
										1	2	3	4							1		1	2	3	4	5	6
	1	2	3	4	5	6	5	6	7	8	9	10	11	2	3	4	5	6	7	8	7	8	9	10	11	12	13
7	8	9	10	11	12	13	12	13	14	15	16	17	18	9	10	11	12	13	14	15	14	15	16	17	18	19	20
14	15	16	17	18	19	20	19	20	21	22	23	24	25	16	17	18	19	20	21	22	21	22	23	24	25	26	27
21	22	23	24	25	26	27	26	27	28	29	30	31		23	24	25	26	27	28	29	28	29	30	31			
28	29	30												30													
January 2027							February 2027							March 2027							April 2027						
M	T	W	T	F	S	S	M	T	W	T	F	S	S	M	T	W	T	F	S	S	M	T	W	T	F	S	S
				1	2	3	1	2	3	4	5	6	7	1	2	3	4	5	6	7				1	2	3	4
4	5	6	7	8	9	10	8	9	10	11	12	13	14	8	9	10	11	12	13	14	5	6	7	8	9	10	11
11	12	13	14	15	16	17	15	16	17	18	19	20	21	15	16	17	18	19	20	21	12	13	14	15	16	17	18
18	19	20	21	22	23	24	22	23	24	25	26	27	28	22	23	24	25	26	27	28	19	20	21	22	23	24	25
25	26	27	28	29	30	31								29	30	31					26	27	28	29	30		
May 2027							June 2027							July 2027							August 2027						
M	T	W	T	F	S	S	M	T	W	T	F	S	S	M	T	W	T	F	S	S	M	T	W	T	F	S	S
					1	2	1	2	3	4	5	6				1	2	3	4							1	
3	4	5	6	7	8	9	7	8	9	10	11	12	13	5	6	7	8	9	10	11	2	3	4	5	6	7	8
10	11	12	13	14	15	16	14	15	16	17	18	19	20	12	13	14	15	16	17	18	9	10	11	12	13	14	15
17	18	19	20	21	22	23	21	22	23	24	25	26	27	19	20	21	22	23	24	25	16	17	18	19	20	21	22
24	25	26	27	28	29	30	28	29	30					26	27	28	29	30	31	23	24	25	26	27	28	29	
31																					30	31					

= Schooldays

= School holidays

= Bank holidays

= Weekends

In addition, schools allocate five non-pupil days, highlighted yellow, out of the school days indicated, or the equivalent in disaggregated twilight sessions.

<b>Autumn Term:</b>	Tuesday 1 September 2026 – Friday 18 December 2026 <i>Half Term 26 October – 30 October</i>	74 days
<b>Spring Term:</b>	Monday 4 January 2027 – Thursday 25 March 2027 <i>Half Term 15 February - 19 February</i>	54 days
<b>Summer Term:</b>	Monday 12 April 2027 – Wednesday 21 July 2027 <i>Half Term 31 May – 4 June, and May Bank Holiday - 3 May</i>	67 days
		<u>195 days</u>

**Please note:**

The above dates may vary for individual schools, especially Foundation, Voluntary Aided schools and Academies.

You are strongly advised to check with your child's school before making any holiday or other commitments.



## Inspires MAT School Term and Holiday Dates Academic Year 2027-2028

September 2027							October 2027							November 2027							December 2027							
M	T	W	T	F	S	S	M	T	W	T	F	S	S	M	T	W	T	F	S	S	M	T	W	T	F	S	S	
											1	2	3	1	2	3	4	5	6	7				1	2	3	4	5
		1	2	3	4	5	4	5	6	7	8	9	10	8	9	10	11	12	13	14	6	7	8	9	10	11	12	
6	7	8	9	10	11	12	11	12	13	14	15	16	17	15	16	17	18	19	20	21	13	14	15	16	17	18	19	
13	14	15	16	17	18	19	18	19	20	21	22	23	24	22	23	24	25	26	27	28	20	21	22	23	24	25	26	
20	21	22	23	24	25	26	25	26	27	28	29	30	31	29	30					27	28	29	31	31				
27	28	29	30																									
January 2028							February 2028							March 2028							April 2028							
M	T	W	T	F	S	S	M	T	W	T	F	S	S	M	T	W	T	F	S	S	M	T	W	T	F	S	S	
					1	2		1	2	3	4	5	6			1	2	3	4	5						1	2	
3	4	5	6	7	8	9	7	8	9	10	11	12	13	6	7	8	9	10	11	12	3	4	5	6	7	8	9	
10	11	12	13	14	15	16	14	15	16	17	18	19	20	13	14	15	16	17	18	19	10	11	12	13	14	15	16	
17	18	19	20	21	22	23	21	22	23	24	25	26	27	20	21	22	23	24	25	26	17	18	19	20	21	22	23	
24	25	26	27	28	29	30	28	29					27	28	29	30	31		24	25	26	27	28	29	30			
31																												
May 2028							June 2028							July 2028							August 2028							
M	T	W	T	F	S	S	M	T	W	T	F	S	S	M	T	W	T	F	S	S	M	T	W	T	F	S	S	
1	2	3	4	5	6	7				1	2	3	4						1	2								
8	9	10	11	12	13	14	5	6	7	8	9	10	11	3	4	5	6	7	8	9		1	2	3	4	5	6	
15	16	17	18	19	20	21	12	13	14	15	16	17	18	10	11	12	13	14	15	16	7	8	9	10	11	12	13	
22	23	24	25	26	27	28	19	20	21	22	23	24	25	17	18	19	20	21	22	23	14	15	16	17	18	19	20	
29	30	31					26	27	28	29	30		24	25	26	27	28	29	30	21	22	23	24	25	26	27		
													31						28	29	30	31						

- = Schooldays
- = School holidays
- = Bank holidays
- = Weekends

In addition, schools allocate five non-pupil days, highlighted yellow, out of the school days indicated, or the equivalent in disaggregated twilight sessions.

<b>Autumn Term:</b>	Wednesday 1 September 2027 – Friday 17 December 2027 <i>Half Term 25 October – 29 October</i>	73 days
<b>Spring Term:</b>	Tuesday 4 January 2028 – Friday 31 March 2028 <i>Half Term 14 February - 18 February</i>	59 days
<b>Summer Term:</b>	Tuesday 18 April 2028 – Friday 21 July 2028 <i>Half Term 29 May – 2 June, and May Bank Holiday - 1 May</i>	63 days
		195 days

**Please note:**  
 The above dates may vary for individual schools, especially Foundation, Voluntary Aided schools and Academies.  
 You are strongly advised to check with your child's school before making any holiday or other commitments.

# Menu for week commencing 09.02.2026 Week 3

## Silver End Academy

Week 3

### Monday

#### Pizza Day

##### Pepperoni

served with mixed leaves and five bean salad

### Tuesday

#### Sausage and Mashed Potato

Served with baked beans or peas (gravy available)

### Wednesday

#### Sticky Chicken

served with wholemeal rice and corn on the cob

### Thursday

#### Brunch Lunch

Sausage, bacon, egg, hash brown and baked beans

### Friday

#### Jumbo Fishfinger

served with crispy chips and peas

#### Sweet Treat Friday

Kitchens choice

#### Pizza Day

##### Cheese & Tomato

served with salad

Jacket Potato with a choice of toppings

#### Quorn Sausage and Mashed Potato

served with baked beans or peas (gravy available)

Jacket Potato with a choice of toppings

#### Cheese & Tomato Whirl

served with wholemeal rice and corn on the cob

Jacket Potato with a choice of toppings

#### Veg Brunch Lunch

Quorn Sausage, egg, hash brown and baked beans

Jacket Potato with a choice of toppings

#### Southern veggie burger/no bun

served with crispy chips and peas

Jacket Potato with a choice of toppings

Available everyday

A vibrant salad bar, fresh fruit and yoghurt, bread, milk, lactose reduced milk and water



#### Fresh

All our food is cooked fresh each day

#### Healthy

Our pasta, rice and breads are healthy wholemeal products

#### checked

We always use reputable suppliers and where possible use local produce



# Menu

Activate Windows

Go to Settings to activate Windows

# Menu for week commencing 23.02.26 Week 1

## Silver End Academy

### Monday

#### **Pork Meatballs in Tomato Sauce**

served with pasta and salad

### Tuesday

#### **Minced Beef Chilli**

served with fluffy wholemeal rice and Sweetcorn

### Wednesday

#### **Roast Chicken**

served with crispy roast potatoes, carrots, broccoli and gravy

### Thursday

#### **Spaghetti Bolognese**

Served and salad

### Friday

#### **Salmon Fish Fingers**

served with  
crispy chips and peas

#### **Sweet Treat Friday**

Kitchens Choice

Available everyday

A vibrant salad bar, fresh fruit and yoghurt Bread, milk, lactose reduced milk and water

Week 1

**Veggie Meatballs in Tomato Sauce**  
served with pasta and  
Salad

**Jacket Potato with a  
Choice of toppings**

**Curried Samosa**  
served with fluffy wholemeal rice  
and Sweetcorn

**Jacket Potato with a choice of  
toppings**

**Vegetarian Tart**  
served with crispy roast potatoes,  
carrots, broccoli and gravy

**Jacket Potato with a choice of  
toppings**

**Macaroni Cheese**  
Served with sweetcorn and salad

**Jacket Potato with a choice of  
toppings**

**Quorn Dippers**  
served with crispy chips and peas

**Jacket Potato with a choice of  
toppings**

**Fresh**

All our food is cooked fresh  
each day

**Healthy**

Our pasta, rice and breads  
are healthy wholemeal  
products

**checked**

We always use  
reputable suppliers and  
where possible use local  
produce

# Menu

